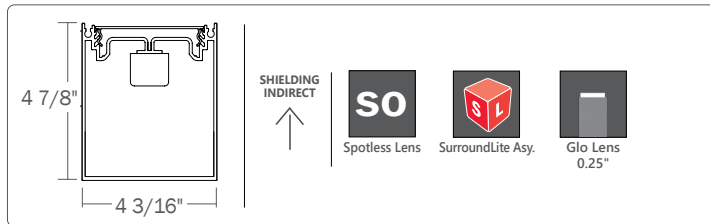


Glo Lens



Project _____

Type _____

Notes _____

PERFORMANCE PER LINEAR FOOT AT 3500K

NOMINAL LUMEN OUTPUT	INPUT WATTS*	EFFICACY	SHIELDING
1200 lm/ft	8.5 W/ft	142 lm/W	SO
1200 lm/ft	9.5 W/ft	127 lm/W	SLA
1200 lm/ft	8.5 W/ft	142 lm/W	0.25G

Please consult factory for custom lumen output and wattage.



Ordering Guide

TB4WILED											
PRODUCT ID		NOM. LUM/FT UP		CRI		COLOR TEMP. (choose one)		SHIELDING			
TB4WILED	BEAM4 - Wall Indirect LED	400	400 lm/ft - Minimum	80	80 CRI	27	2700 K	TW2750	2700-5000 K - Tunable White	SO	spotless lens
		1200	1200 lm/ft - Maximum	90	90 CRI*	30	3000 K	TW2765	2700-6500 K - Tunable White	SLA	surroundlite asymmetric
						35	3500 K	BTW3527	3500-2700 K - Tunable BIOS	0.25G	0.25" Glo lens
						40	4000 K	BTW4027	4000-2700 K - Tunable BIOS		
						B30	3000 K - BIOS*				
						B35	3500 K - BIOS*				
						B40	4000 K - BIOS*				
		Outputs between listed min and max are available. Consult factory for outputs outside of the listed range. Consult factory for max output with BIOS		* Not available with BIOS.		Consult Axitune technical sheet for more information on color technology. *Consult BIOS guide for more information on BIOS technology		Choose only one of the options above			

LENGTH (FT)	FINISH	VOLTAGE	DRIVER	CIRCUITS
2 2'	AP aluminum paint	120 120 V	DP dimming (0-10V) 1%	1 1 circuit
3 3'	W white	277 277 V	LT(#) Lutron*	2 2 circuits
4 4'	BLK black	347 347 V	BI bi-level dimming	+E(#) emergency circuit*
5 5'	C custom	UNV universal	O(#) other**	+NL(#) night light circuit*
8 8'		DC low voltage*	DPB(STC) dimming (0-10V) 1% with BIOS*	+GTD(#) generator transfer device*
12 12'			DPB(DYN) Bio-dimming™ 100%-81% with BIOS*	+M MR
S(L) System Run			TW(#) tunable white drivers*	
			POE(#) POE drivers*	
		* Only available with POE drivers.	*Specify system **Please consult factory; see page 2	*Specify quantity

BATTERY (OPTIONAL)	IC CONTROLS (OPTIONAL)	CUSTOM (OPTIONAL)
B(#) battery pack (integral)	DS(#) daylight sensor OS(#) occupancy sensor DOS(#) daylight & occupancy sensor EN(#) Enlighted integral* ENR(#) Enlighted remote* WC(#) wireless control dimming	C custom
Minimum 5ft; Not available with 347V Please consult factory	*Please consult factory Specify quantity. Requires 8" blank. See integrated controls guide for more details. Consult factory for Tunable White. Not available with DPB (DYN) driver for BIOS with Dynamic Spectrum.	Please specify

● CONSTRUCTION

Housing	Extruded aluminum (0.075" nominal) Up to 70% recycled content
End Cap	Cast aluminum
Interior Brackets	Die formed sheet steel (20 gauge)
Reflectors	White powder coated sheet steel (22 gauge)
Lenses	Extruded acrylic (0.070" nominal)
Hanger	Die cast aluminum
Suspension	Sliding aircraft cable along product length

● ELECTRICAL

Lutron driver	LDE1 - Hi-lume 1% EcoSystem with Soft-on, Fade-to-Black
Other drivers**	DALI - Digital Addressable Lighting Interface DMX - Digital Multiplex Xitanium SR - For wireless sensor
BIOS DPB drivers*	STC - BIOS control 0-10V with static spectrum and BIOS SkyBlue enabled from 100% to 1%. DYN - BIOS control 0-10V with dynamic spectrum and BIOS SkyBlue® with Bio-Dimming™, which changes spectral qualities by removing the SkyBlue component when dimming from 100% to 81%, while light output remains relatively constant; bio-dimming reduces CCT to 2700K. Dimming from 80% to 1% will then reduce light output.
Tunable White TW drivers*	DALIDT6 - DALI Type 6 (Two DALI Addresses) DALIDT8 - DALI Type 8 (One DALI Address)
Power over Ethernet POE drivers*	MOLEX IGOR SMARTENGINE O - Other (Consult factory)
Emergency	UL2108 certified for integral or remote driver Integral emergency battery pack or emergency circuit optional.
Input Voltage	120V, 277V, 347V, UNV, DC.
Flex Whip	Shipped in a separate box for contractors to install

*Choose driver from available options.

i Incorporating these components may have limitations or affect the length of the luminaire. Please contact factory for more details.

● WARRANTY

Limited 5-year warranty is available. Warranty is valid provided luminaires are installed and used according to specifications. For full terms and conditions, please consult warranty section at axislighting.com.

● SYSTEM (S#)

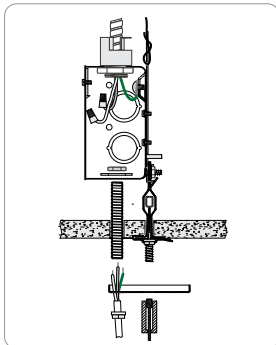
BEAM 4 linear systems, with the use of a strong profile, allow for a nearly hair thin connection system of continuous runs. Lengths of 4', 8', 12' as well as custom lengths are available. Runs of BEAM 4 that are greater than 12' in length are designated as systems (S#). This means that the run is comprised of a combination of 4', 8' and/or 12' sections to be assembled on site using our joining system. System runs with SurroundLite available in 1' increments only. For more information on systems and joining, please refer to the BEAM installation sheets available for download at www.axislighting.com.

● LED SYSTEM

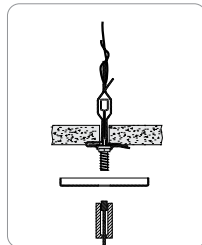
CRI	Minimum 80 or 90 color rendering index.
CRI BIOS	Minimum 80 color rendering index with R9>75 for all CCTs.
CCT Single Color	Choice of 2700K, 3000K, 3500K and 4000K color temperature with a great color consistency (within 3-step MacAdam ellipse). Both within fixture and fixture to fixture.
CCT BIOS	BIOS Static (STC) Choice of 3000K, 3500K and 4000K. BIOS SkyBlue® Dynamic (DYN) Choice of 3000K, 3500K, and 4000K with Bio-Dimming™ BIOS Tunable White (BTW) Choice of 4000-2700K and 3500-2700K; does not use a bio-dimmer, it uses TW drivers, which allow independent control of CCT and intensity; e.g., BTW4027 provides combined SkyBlue + white light at 4000K, SkyBlue is removed at 2700K. Light output can be adjusted for each CCT. Consult BIOS guide for more information on BIOS technology.
CCT Axitune Systems	Consult Axitune technical sheet for more information on color technology.
LED life	Minimum 50,000h with 85% of lumen maintenance in 25°C ambient temperature, in compliance with IES LM-80 testing measurements.
Thermal Management	Aluminum housing acting as the heat sink to maximize life.
Environment	Dry and damp rated for indoor use only in operating ambient temperatures of 0-40°C (32-104°F).

● MOUNTING OPTIONS

CT TILE CEILING - ON GRID

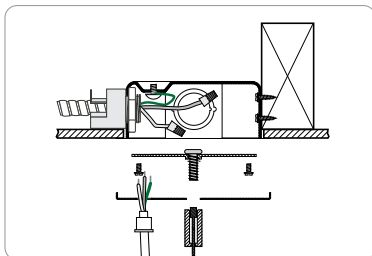


Power feed

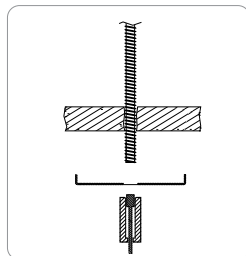


Non power feed

CA DRYWALL CEILING

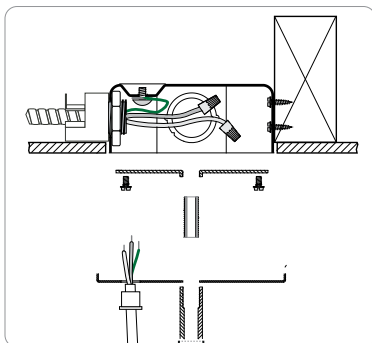


Power feed

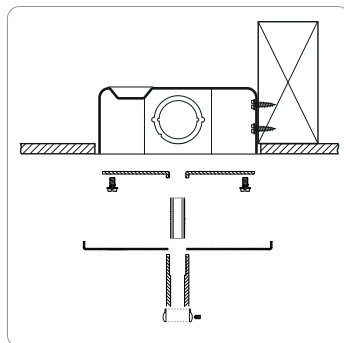


Non power feed

SA STEM MOUNT IN DRYWALL CEILING



Power feed



Non power feed

● FINISH

Aluminium paint, powder coated and custom finishes are also available.

● APPROVALS

Certified to UL and CSA standards
Meets NYC requirements
Meets ADA requirements.
Suitable for damp locations.



● OTHER MOUNTING OPTIONS

BEAM 4 is also available with wall mounted option.

i Specification sheets and installation sheets for all mountings for BEAM 4 luminaires are available for download at www.axislighting.com

Beam 4

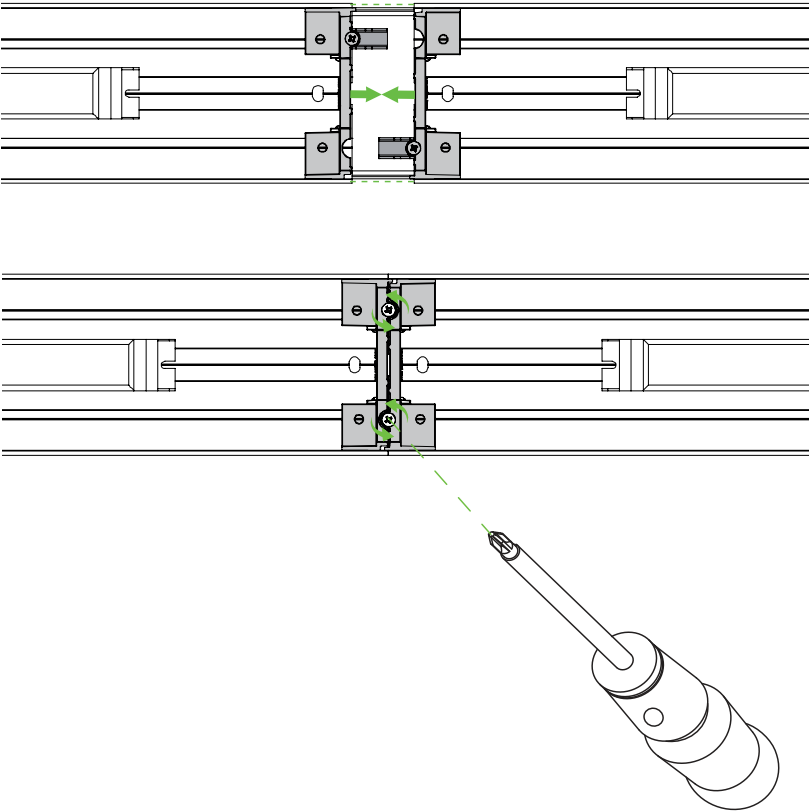
Wall mount - Indirect

● JOINERS

BEAM 4 luminaires feature the joining mechanism shown below. This mechanism joins and aligns multiple luminaires to create long continuous runs of light.

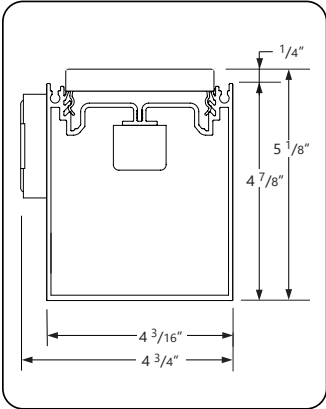
NOTE: Mount each system segment individually.

Do not assemble system prior to mounting

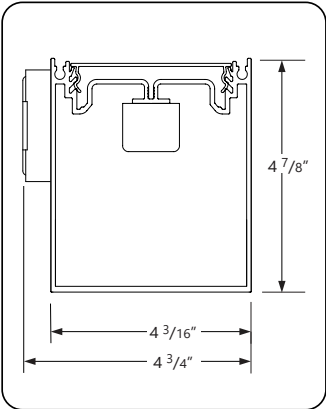


SECTION VIEWS

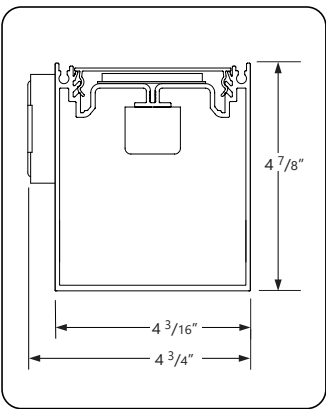
0.25G 0.25" Glo lens - Indirect



SO Spotless lens - Indirect



SLA SurroundLite Asy. - Indirect



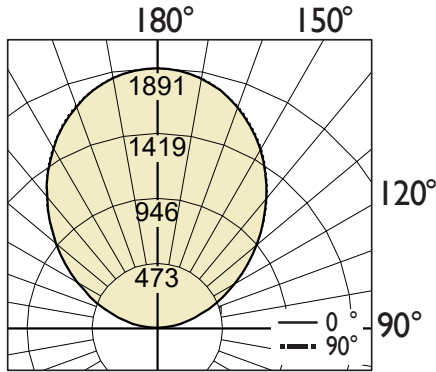
● PHOTOMETRIC DATA

SO Spotless lens - Up

1200 lm/ft



PHOTOMETRIC CURVE



Lumen/ft up: 1200 lm/ft
Total Lumens: 4800 lm (for 4ft)
Input Watts: 33.8 W
Efficacy: 142 lm/W
 IES FILE: TB4WILED-1200-80-35-SO-4.IES

TESTED ACCORDING TO IES LM-79-2008

CANDELA DISTRIBUTION

Vertical Angle	Horizontal Angles				
	0	22.5	45	67.5	90
90	5	4	4	3	4
95	82	86	91	92	101
105	279	284	294	300	311
115	535	538	545	548	559
125	823	825	828	829	840
135	1122	1121	1121	1120	1131
145	1405	1403	1403	1397	1406
155	1642	1640	1635	1633	1639
165	1801	1799	1801	1799	1802
175	1885	1883	1883	1883	1885
180	1891	1891	1891	1891	1891

ZONAL LUMENS

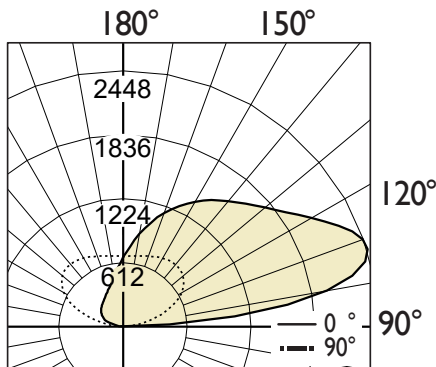
Zone	Lumens
90	
90-100	93
100-110	302
110-120	527
120-130	728
130-140	853
140-150	867
150-160	747
160-170	505
170-180	178
180	

SLA SurroundLite Assymetric - Up

1200 lm/ft



PHOTOMETRIC CURVE



Lumen/ft up: 1200 lm/ft
Total Lumens: 4800 lm (for 4ft)
Input Watts: 37.9 W
Efficacy: 127 lm/W
 IES FILE: TB4WILED-1200-80-35-SLA-4.IES

TESTED ACCORDING TO IES LM-79-2008

CANDELA DISTRIBUTION

Vertical Angle	Horizontal Angles				
	0	22.5	45	67.5	90
90	5	4	4	3	4
95	82	86	91	92	101
105	279	284	294	300	311
115	535	538	545	548	559
125	823	825	828	829	840
135	1122	1121	1121	1120	1131
145	1405	1403	1403	1397	1406
155	1642	1640	1635	1633	1639
165	1801	1799	1801	1799	1802
175	1885	1883	1883	1883	1885
180	1891	1891	1891	1891	1891

ZONAL LUMENS

Zone	Lumens
90	
90-100	93
100-110	302
110-120	527
120-130	728
130-140	853
140-150	867
150-160	747
160-170	505
170-180	178
180	

i All IES files are available for download at: www.axislighting.com

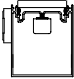
Beam 4

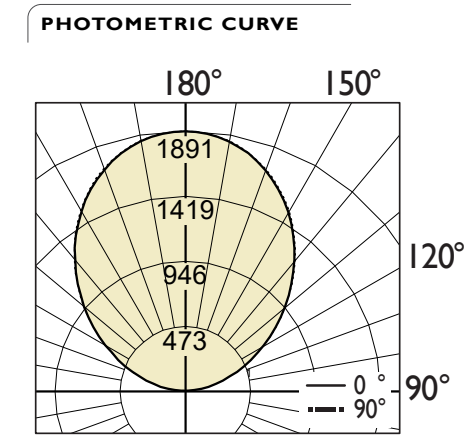
Wall mount - Indirect

● PHOTOMETRIC DATA

0.25G 0.25" Glo lens - Up

1200 lm/ft





Lumen/ft up: 1200 lm/ft
Total Lumens: 4800 lm (for 4ft)
Input Watts: 33.8 W
Efficacy: 142 lm/W
IES FILE: TB4WILED-1200-80-35-0.25G-4.IES

TESTED ACCORDING TO IES LM-79-2008

CANDELA DISTRIBUTION					
Vertical Angle	Horizontal Angles				
	0	22.5	45	67.5	90
90	14	33	61	88	98
95	85	108	140	169	181
105	272	292	323	352	364
115	517	536	552	570	577
125	799	812	823	831	825
135	1094	1102	1110	1116	1104
145	1375	1381	1396	1388	1379
155	1623	1625	1619	1610	1608
165	1765	1771	1768	1765	1765
175	1843	1843	1843	1843	1842
180	1850	1850	1850	1850	1850

ZONAL LUMENS	
Zone	Lumens
90	
90-100	142
100-110	327
110-120	529
120-130	713
130-140	835
140-150	850
150-160	734
160-170	495
170-180	175
180	

i All IES files are available for download at: www.axislighting.com