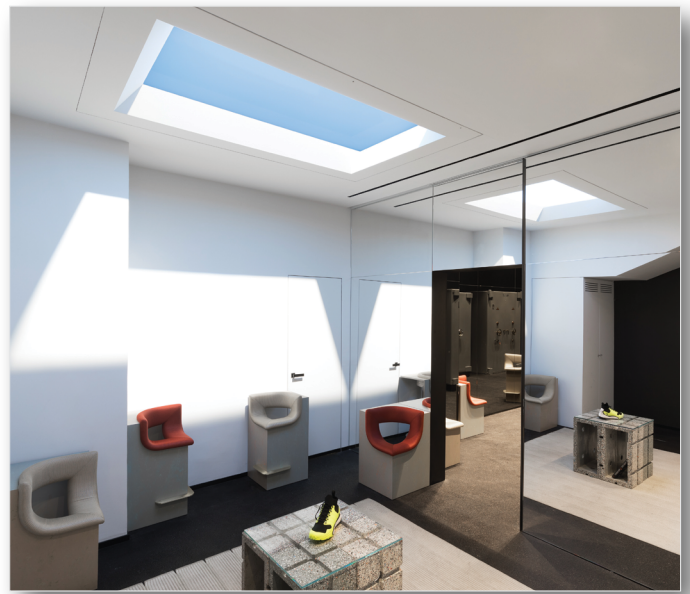
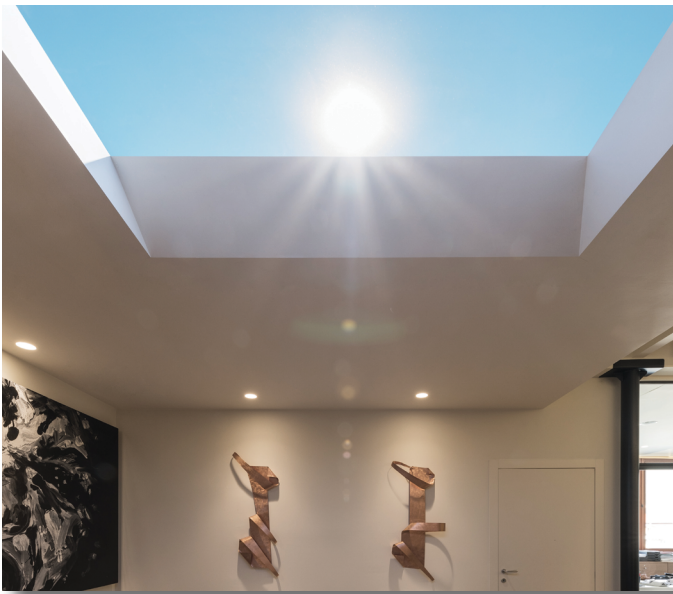


CoeLux High-End (AXHE) systems recreate the ultimate daylight experience with the sun and sky at an infinite distance. They come in two versions designed for high ceilings (HC) and low ceilings (LC).

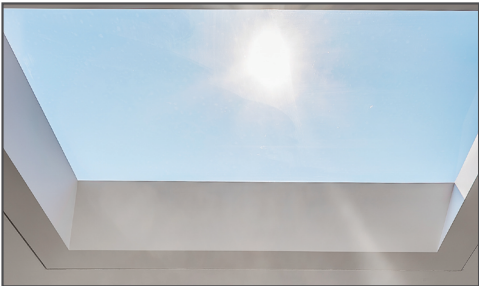
- **AXHE 45HC** produces a 45-degree sun beam that delivers an equal balance of light and shade. Ideal for high-ceilinging spaces, it is the largest available CoeLux optical system, measuring approximately 16 ft² (1.5 m²). Also offered with an add-on moon option (CSM - CoeLux Sky, Sun & Moon light engine) for a dimly lit ambient night sky.



Project

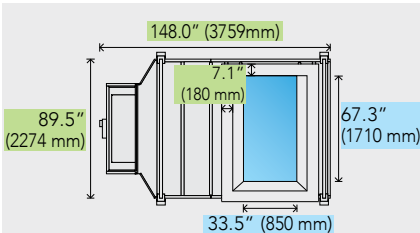
Type

Notes

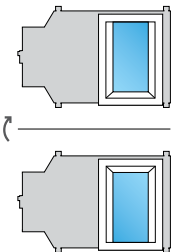


Ceiling installation

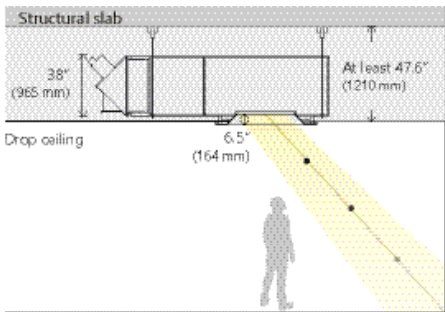
Bottom view**



Frame position



Side view**



Sun

- 2300 lux at 3.28' (1 m)
- 1500 lux at 6.56' (2 m)
- 1000 lux at 9.84' (3 m)

Frame type:

Reveal (Polyurethane)

Flush (Wood)



Fixture Dimensions Skylight Dimensions

**Flangeless detail to drywall, wood or custom-cut ACT.

THE AXIS ADVANTAGE

Exceptional lighting
deserves exceptional support.



Ordering Guide

See full certification on page 4





AXHE45HC		36	41	FRAME TYPE	COELUX LIGHT ENGINE
PRODUCT ID		SIZE	LUMENS		
AXHE45HC	High End - 45 High Ceiling	36 3'x6' nominal (34.3" x 67.9")	41 4100 lm	RE reveal (polyurethane) FL flush (wood)	CSS CoeLux sky and sun CSM CoeLux sky, sun and moon
			Lumen output is fixed	See page 4 for more details	

95	120	DA	1	CF
CRI	VOLTAGE	DRIVER	CIRCUITS	MOUNTING / SUSPENSION
95 95+ CRI	120 120 V	DA DALI*	1 1 circuit	CF CoeLux flangeless
		* Driver Integral. Dimming down to 55%.		

THE AXIS ADVANTAGE

Exceptional lighting deserves exceptional support.



-  Axis Experience Centers to see CoeLux technology up close – Centers under development throughout North America in addition to Montreal, Canada location.
-  Axis Inspiration through a team of lighting experts with CoeLux experience and daylighting know-how to help you integrate CoeLux in your building.
-  Axis Design Resources, including application specialists and specification documents to help you design your CoeLux space.
-  Axis Service Commitment with fast delivery, installation guidelines and 5-year Axis warranty for unparalleled support.

Get more out of your CoeLux experience with Axis!

AXHE 45HC



CoeLux moon



CoeLux sun

SPECIFICATIONS

CONSTRUCTION

Light Engine	Aluminum housing and structure supported by threaded rods.
Optics	CoeLux patent-pending sky, sun and moon optics
Support Frame	Extruded aluminum frame to support housing and trim
Polyurethane Drop Trim	Reinforced polyurethane construction
Flush Wood Trim	Wood

WARRANTY

Limited 5-year warranty is available. Warranty is valid provided luminaires are installed and used according to specifications. For full terms and conditions, please consult warranty section at axislighting.com.

CoeLux AXHE 45HC Basic Data

LED SYSTEM

CRI	95+ color rendering index.
CCT	See CoeLux AXHE 45HC basic data below.
LED life	Minimum 50,000h with 80% of lumen maintenance in 25°C ambient temperature, in compliance with IES LM-80 testing measurements.
Thermal Management	Aluminum housing acting as the heat sink to maximize life.
Environment	Dry and damp rated for indoor use only in operating ambient temperatures of 0-40°C (32-104F) maximum operating relative humidity 95%.

CoeLux Flangeless Frame

Luminaire supported by threaded rods and finished with a flangeless architectural frame. Can be surrounded by drywall, wood or custom cut ACT.

AXIS SUPPORT

For a visit to an Axis CoeLux Experience center, contact your local Axis representatives.

Product Name		AXHE 45HC	
		Sun state features	Moon state features
Optical features	Total light output	4700 lm	~ 10 lm
	Lumen maintenance (L80)	> 50000h	> 50000h
	LED CRI (Ra)	>95	
	CCT of transmitted beam	4100K	
	CCT of the Sky	~ 17000 K	
	Beam angle	45°	45°
	Divergence (H/V)	30°/10°	30°/10°
	Sun appearance	visible sharp	visible sharp
	Sky appearance	clear	clear
	Melanopic Ratio (Sky)	1.444	
	Melanopic Ratio (Sun)	0.764	
Electrical	Power input	100-240V, 50/60Hz	100-240V, 50/60Hz
	Max power consumption	300W	< 15W
	Typical power consumption	270W	
Mechanical features	Weight (without frame)	300 kg 660 lb	300 kg 660 lb

● PHOTOMETRIC DATA

