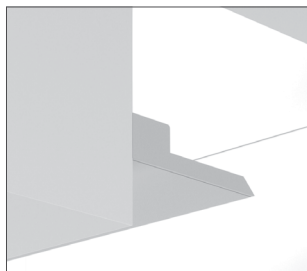
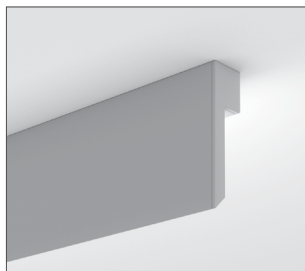


Right Angle mount (R)



Right Angle mount (R)

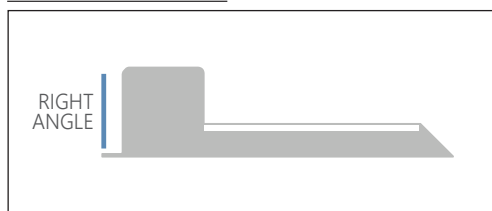


Project _____

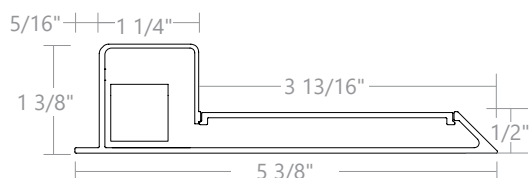
Type _____

Notes _____

MOUNTING SIDE



Please provide elevation view

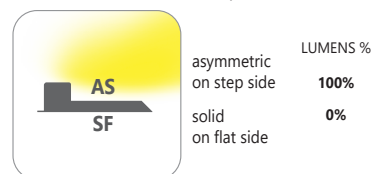


PERFORMANCE PER LINEAR FOOT AT 3500K

NOMINAL LUMEN OUTPUT	INPUT WATTS*	EFFICACY
250 lm/ft	2.39 W/ft	105 lm/W
500 lm/ft	4.77 W/ft	105 lm/W
850 lm/ft	8.11 W/ft	105 lm/W
1000 lm/ft	9.55 W/ft	105 lm/W

*Please consult factory for custom lumen output and wattage.

LIGHT DISTRIBUTION (EXAMPLE AS-SF 500 LUMENS UP)



NOTE: Rotate distribution 90° when luminaire is mounted on ceiling.



Ordering Guide

PSK		MOUNTING SIDE		NOM. LUMENS/FT	
PRODUCT ID					
PSK	Pose Knife Edge	R	right angle	250	250 lm/ft
				500	500 lm/ft
				850	850 lm/ft
				1000	1000 lm/ft
Outputs between listed min and max are available. Consult factory for outputs outside of the listed range.					

CRI	COLOR TEMP.	LENGTH	FINISH	VOLTAGE	DRIVER
80 80 CRI	27 2700 K	2 2'	AP aluminum paint	120 120 V	DP dimming (0-10V) 1% - integral*
90 90 CRI	30 3000 K	3 3'	W white	277 277 V	POE(#) POE drivers**
	35 3500 K	4 4'	BLK black	347 347 V*	
	40 4000 K	5 5'	C custom	UNV universal	
		6 6'		DC low voltage**	
		7 7'			
		8 8'			
		S# system run*			
Consult factory for other color temperatures		2ft min, 1 ft increment, 8ft max stand alone. For all other lengths and related outputs, please consult factory.		* Remote driver only. ** Only available with POE drivers.	*Integral driver ** Specify system

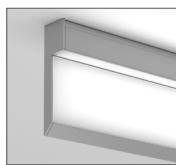
CIRCUITS	MOUNTING	REMOTE BATTERY (OPTIONAL)	OTHER (OPTIONAL)	CUSTOM (OPTIONAL)
1 1 circuit	MT mounting track for drywall and solid ceiling	B(#) remote battery pack	F fuse	C custom
2 2 circuits*				
+E(#) emergency circuit (3)				
(3) Specify quantity 4' length min; *To control sections separately		Requires 120V or 277V		Please specify
For drywall and solid ceiling mounting. Please consult factory for power feed options available for your ceiling type and application.				

● SPECIFICATIONS

CONSTRUCTION

Housing	Extruded aluminum (0.05" nominal) Up to 70% recycled content
End Cap	Cast aluminum
Interior Brackets	Die formed sheet steel (22 gauge)
Reflectors	White powder coated sheet steel (24 gauge)
Lenses	Extruded acrylic (0.070" nominal)

● OPTICS



UB Ultra Blend Lens

● ELECTRICAL

Power over Ethernet POE drivers*
(consult factory for more information)
UL2108 certified for integral or remote driver

MOLEX
IGOR
O - Other (Consult factory)

Emergency Remote emergency battery pack or emergency circuit optional.

Input Voltage 120V, 277V, 347V (remote), UNV.

i Incorporating these components may have limitations or affect the length of the luminaire, please contact factory for more details.

● SYSTEM (S#)

POSE linear systems, with the use of a strong profile, allow for a connection system of continuous runs. Lengths of 2ft min, 1ft increments, 8ft max stand alone as well as custom lengths are available. Runs of POSE that are greater than 8' in length are designated as systems (S#). This means that the run is comprised of a combination of sections to be assembled on site using our joining system. For more information on systems and joining, please refer to the POSE installation sheets available for download at www.axislighting.com.

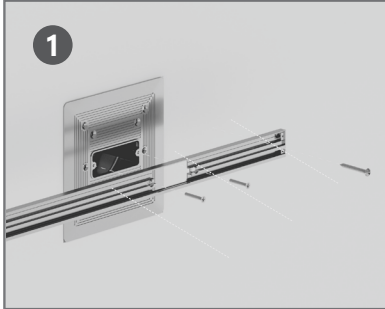
● LED SYSTEM

CRI	Minimum 80 or 90 color rendering index.
CCT	Choice of 2700K, 3000K, 3500K and 4000K color temperature with a great color consistency (within 3-step MacAdam ellipse). Both within fixture and fixture to fixture. Consult factory for other color temperatures
LED life	Minimum 50,000h with 85% of lumen maintenance in 25°C ambient temperature, in compliance with IES LM-80 testing measurements.
Thermal Management	Aluminum housing acting as the heat sink to maximize life.
Environment	Dry and damp rated in operating ambient temperatures of 0-40°C (32-104°F).

● WARRANTY

Axis Lighting will warrant defective LEDs, boards, and drivers for 5 years from date of purchase. Warranty is valid if luminaire is installed and used according to specifications. If defective, Axis will send replacement boards or drivers at no cost along with detailed replacement instructions and instructions on how to return defective components to Axis.

Minimal design, clean installation



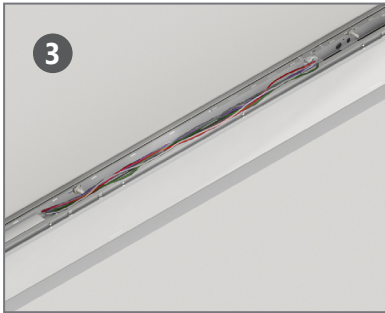
1 INSTALL MOUNTING TRACK

Position, level and fasten Pose track system to the wall or ceiling.



2 ATTACH FIXTURE

Remove cover. Align fixture mounting holes with anchoring bolts on track system. Tighten to secure.



3 POWER

Make electrical connection.



4 COVER, SET AND LIGHT IT UP!

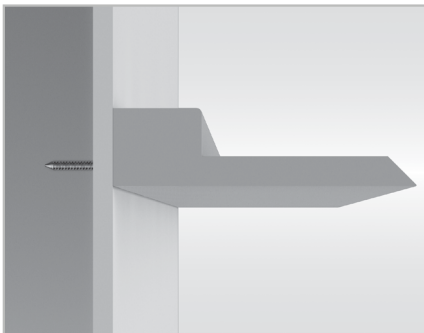
Snap in cover and tighten set screw.

Mounting flexibility, multiple application solutions

Use mounting track (MT) for wall or ceiling mount.

MOUNTING TRACK (MT)

flush with wall or surface



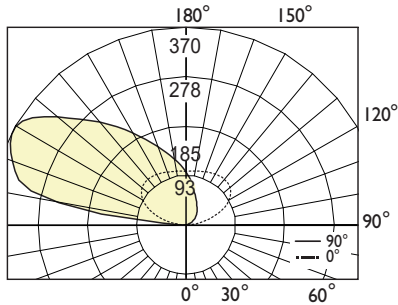
● PHOTOMETRIC DATA



LUMENS %
100%
0%

Uplight 100%
300 lm/ft

PHOTOMETRIC CURVE



Lumen/ft up: 330 lm/ft
Total Lumens: 660 lm (for 2ft)
Input Watts: 6.29 W
Efficacy: 105 lm/W

80 CRI shown. For 90 CRI, divide wattage by 0.8 and multiply efficacy by 0.8.

IES FILE: PSK-2-R-AS-300-80-3500-W-120-DP-1.IES

TESTED ACCORDING TO IES LM-79-2008

CANDELA DISTRIBUTION

Vertical Angle	Horizontal Angles				
	0	22.5	45	67.5	90
85	0	0	0	0	0
90	0	1	1	1	1
95	11	1	1	1	1
105	47	14	4	3	3
115	81	35	18	12	10
125	103	54	32	23	21
135	112	68	43	32	29
145	112	77	53	41	37
155	109	83	63	52	48
165	105	91	76	68	64
175	102	97	94	91	89
180	101	101	101	101	101

ZONAL LUMENS

Zone	Lumens
80-90	36
90	109
90-100	129
100-110	122
110-120	99
120-130	75
130-140	51
140-150	29
150-160	10
160-170	54
170-180	109
180	