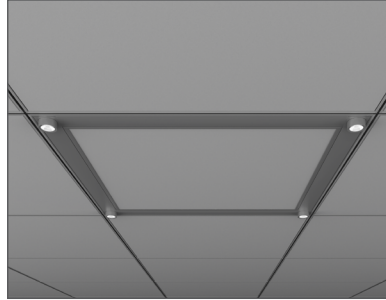


Linear option shown



Kit option shown

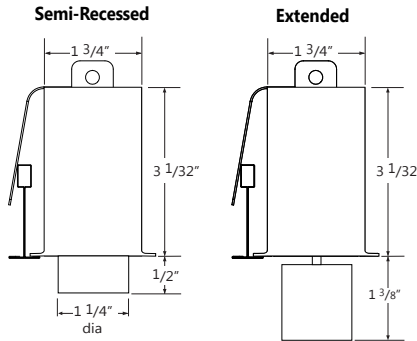
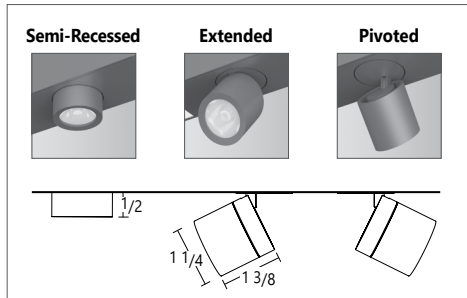
Project \_\_\_\_\_

Type \_\_\_\_\_

Notes \_\_\_\_\_

## PERFORMANCE

Beam Spread	24°	36°	60°
CBCP	2287 cd	796 cd	446 cd



## Ordering Guide

**A configuration drawing is required**

See page 7

SCRAC		ACCENT QTY		BEAM		SHIELDING (OPTIONAL)		DRIVER	
PRODUCT ID		AC(#)	Accent quantity	D24	24 deg	HX	hexcell	DP	dimming (0-10V) 1%
SCRAC	Sculpt Recessed with Accent LED			D36	36 deg			POE(#)	POE drivers*
				D60	60 deg				
				All Accents on a module will have the same beam spread. Final beam spread arrangements will be specified on shop drawings.		1/8" extended insert		* Specify system	

CHANNEL COVER		CRI		COLOR TEMP.		LINEAR LENGTH or CEILING KIT (select one)		FINISH	
CC	with channel cover	80	80 CRI	27	2700 K	#	2 ft - 12 ft continuous length	L	L shape 2' *
WCC	without channel cover*	90	90 CRI	30	3000 K	U	U shape 2' *	AP	aluminum paint
				35	3500 K	2x2	2'x2' *	W	white
				40	4000 K	2x4	2'x4' *	BLK	black
						2x6	2'x6' *		
						2x8	2'x8' *		
						2x10	2'x10' *		
						2x12	2'x12' *		
						4x4	4'x4' *		
						K(#)	Other kits *		
Available with or without channel cover; See page 2 for more details * Fixture comes in black only						* Available as kit; Sculpt accommodates any length. Metric lengths also available, please consult factory.			

VOLTAGE		CIRCUITS		MOUNTING/SUSPENSION		BATTERY (OPT.)		OTHER (OPT.)		CUSTOM (OPT.)	
120	120 V	1	1 circuit	MFTB9	MiniFlange t-bar 9/16" *	ST	screw slot t-bar	B(#)	battery pack 4' sections	FW	flex whip (6' std)*
277	277 V			MFTB15	MiniFlange t-bar 15/16" *	TG9	regular 9/16"			CP	Chicago plenum
347	347 V			MFST	MiniFlange screw slot t-bar *	TG15	regular 15/16"				
UNV	universal			MFTG9	MiniFlange 9/16" t-regular *	DF	drywall flange				
DC	low voltage*			MFTG15	MiniFlange 15/16" t-regular *	D	drywall flangeless				
				TB9	t-bar 9/16"	DB	slip-through bracket				
				TB15	t-bar 15/16"	DS	drywall spackle flange				
* Only available with POE drivers.				* Must select from these options when ordering kits. See page 3 for more details		Not available with 347V Please consult factory		* Other lengths available; please consult factory.		Please specify	



### LED SYSTEM

<b>CRI</b>	Minimum 80 or 90 color rendering index
<b>CCT</b>	Choice of 2700K, 3000K, 3500K and 4000K color temperature with a great color consistency (within 3.0-step MacAdam ellipse).
<b>LED life</b>	Minimum 50,000h with 70% of lumen maintenance in 25°C ambient temperature, in compliance with IES LM-80 testing measurements.
<b>Thermal Management</b>	Aluminum housing acting as the heat sink to maximize life.

### CONSTRUCTION

<b>Housing</b>	Extruded aluminum (0.080" nominal) up to
<b>End Cap</b>	Die cast aluminum
<b>Interior Brackets</b>	Die formed sheet steel (20 gauge)
<b>Hanger</b>	Die cast aluminum
<b>Suspension</b>	Sliding aircraft cable along product length
<b>Cable Grips</b>	Quick connecting / release

### ELECTRICAL

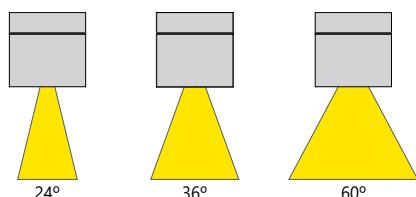
<b>Power over Ethernet</b>	MOLEX
<b>POE drivers*</b>	IGOR
(consult factory for more information)	SMARTENGINE
UL2108 certified for integral or remote driver	O - Other (Consult factory)
<b>Input Voltage</b>	120V, 277V, UNV.

**i** Incorporating these components may have limitations or affect the length of the luminaire. Please contact factory for more details.

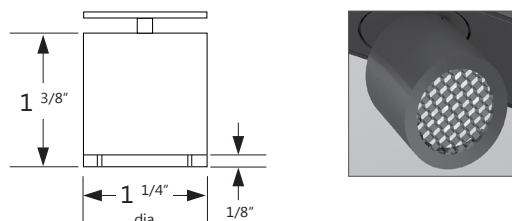
### WARRANTY

Limited 5-year warranty is available. Warranty is valid provided luminaires are installed and used according to specifications. For full terms and conditions, please consult warranty section at [axislighting.com](http://axislighting.com).

### BEAM SPREADS



### HEXCELL SHIELDING OPTIONS



### SAFETY NOTE

Although Accent lamps operate at cooler temperatures than halogen lamps, it is recommended that gloves be worn when adjusting Accents that have been energized.

**\*Patent Number: 9416535 B1**

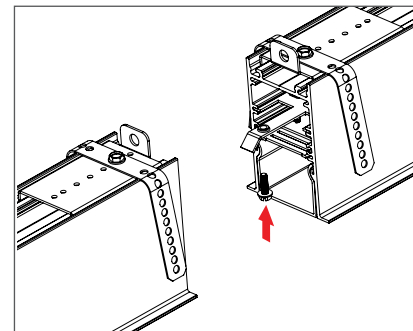
### WEIGHT

<b>4 ft</b>	8 lbs / 3.6 kg
<b>8 ft</b>	16 lbs / 7.3 kg
<b>12 ft</b>	24 lbs / 10.9 kg

### JOINERS

In order to allow very long runs of SCULPT luminaires, Axis has developed an effective joining system. Special care has been taken to maximize the performance of the joiner for each SCULPT option.

**NOTE:** Mount each system segment individually. Do not assemble system prior to mounting.



**i** Allow a minimum of 6" between end of long runs and vertical wall

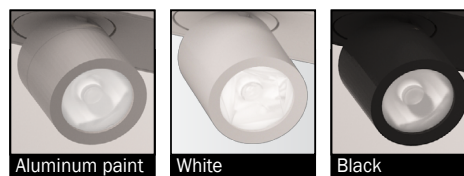
### APPROVALS

Certified to UL and CUL standards Suitable for damp locations.

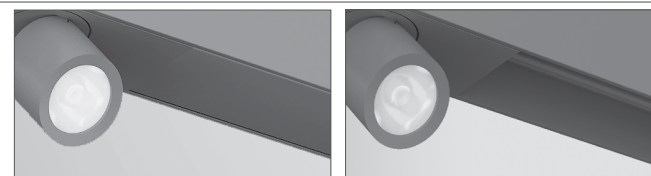
### SYSTEM (S#)

SCULPT linear systems, with the use of a strong profile, allow for a nearly hair thin connection system of continuous runs. Lengths of 4', 8', 12' as well as custom lengths are available. Runs of SCULPT that are greater than 12' in length are designated as systems (S#). This means that the run is comprised of a combination of 4', 8' and/or 12' sections to be assembled on site using our joining system. For more information on systems and joining, please refer to the SCULPT installation sheets available for download at [www.axislighting.com](http://www.axislighting.com).

### FINISHES



### CHANNEL COVER OPTIONS

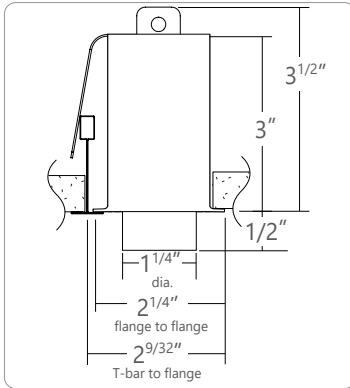


With channel cover

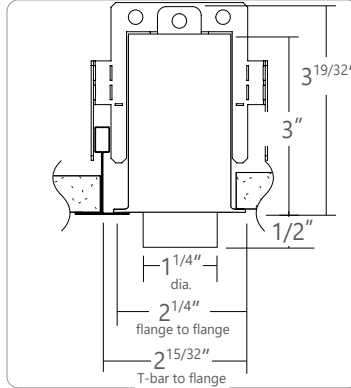
Without channel cover



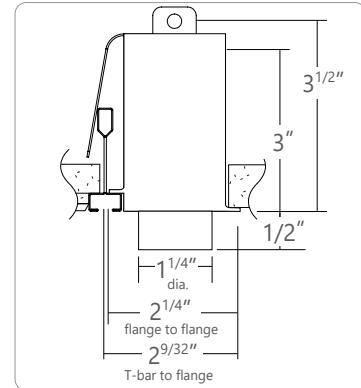
### ● KIT AND LINEAR - WITH INTEGRATED



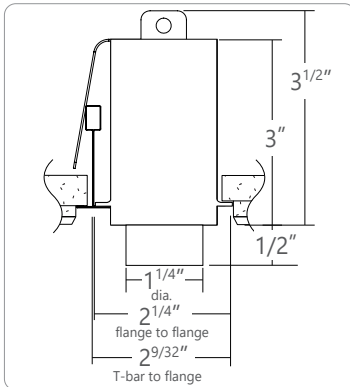
**MFTB9 MiniFlange 9/16" T-BAR**



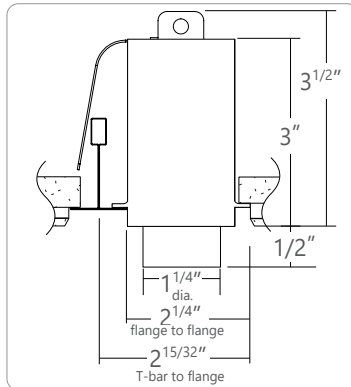
**MFTB15 MiniFlange 15/16" T-BAR**



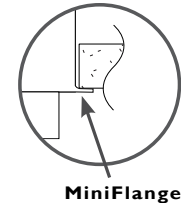
**MFST MiniFlange SCREW SLOT T-BAR**



**MFTG9 MiniFlange 9/16" T-TEGULAR**



**MFTG15 MiniFlange 15/16" T-TEGULAR**

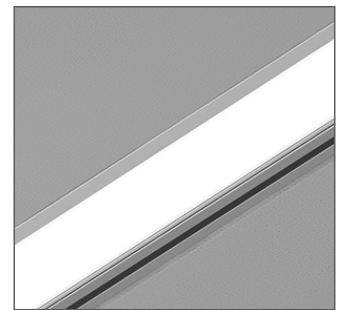


**MiniFlange**

### Integrated MiniFlange (patent pending)

When installed along T-bars in acoustic ceilings, the Integrated MiniFlange supports adjacent ceiling tiles. At the same time, it **eliminates the need for a second T-bar**. This feature comes standard on Sculpt Recessed.

- Fewer materials needed and less labor.
- Conceals ceiling tile cutline for a cleaner appearance.
- Simplifies drawings and trade coordination.
- Available in different T-bar profiles.

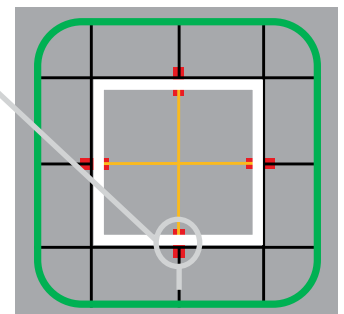


**With Integrated MiniFlange**

### The T-Aligner™ (patent pending)

- Foolproof solution for a perfectly aligned ceiling grid.
- Connects cut T-bars on either side of a Sculpt luminaire or ceiling kit.
- No need to specify – Comes standard with Sculpt Recessed.
- Compatible with all T-bar profiles including slot and Tegular (9/16" and 15/16").

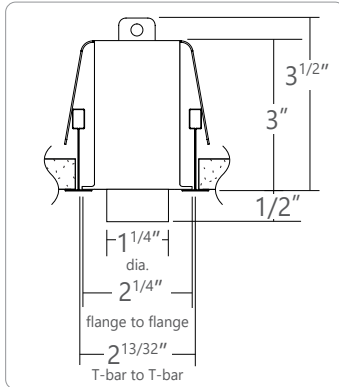
T-Aligners are installed where T-bars intersect the luminaire or ceiling kit.



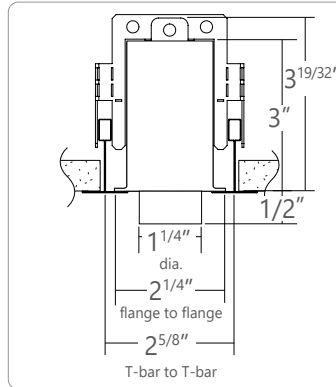
**View from above ceiling**



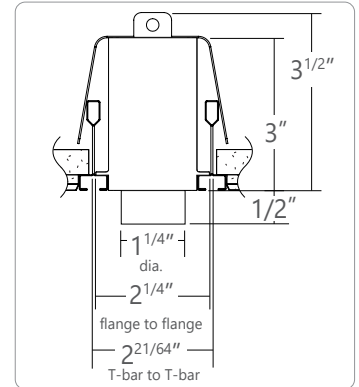
### STANDARD T-BAR CEILING MOUNTING OPTIONS



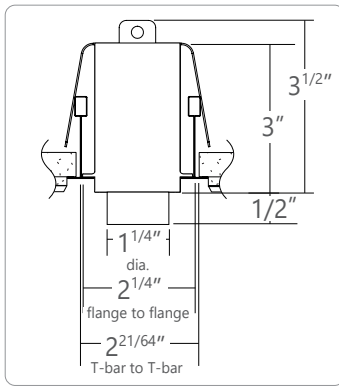
**TB9 9/16" T-BAR**



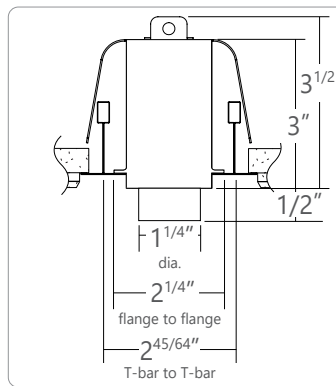
**TB15 15/16" T-BAR**



**ST SCREW SLOT T-BAR**

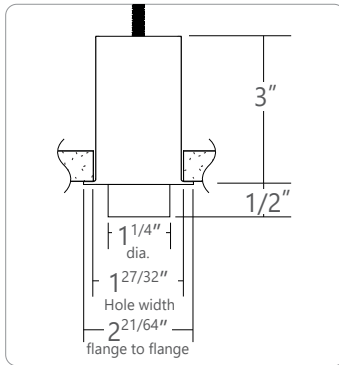


**TG9 9/16" T-TEGULAR**

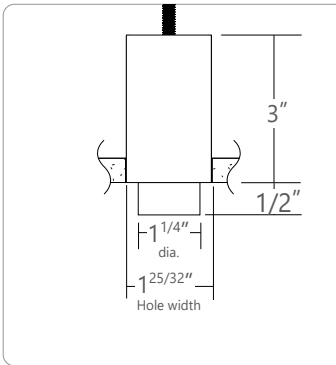


**TG15 15/16" TEGULAR**

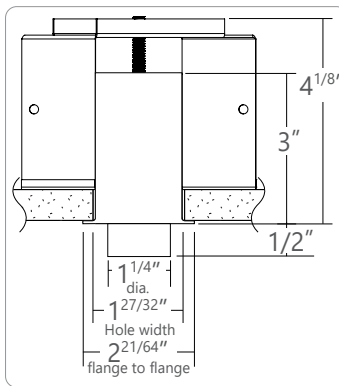
### DRYWALL CEILING MOUNTING OPTIONS



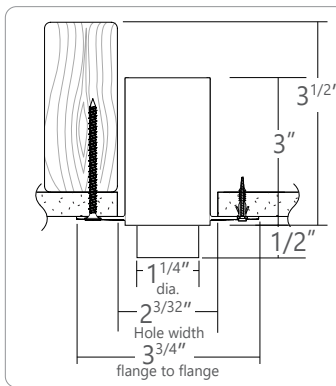
**DF VISIBLE FLANGES WITH 1/4-20 STUD MOUNTING**



**D FLANGELESS WITH 1/4-20 STUD MOUNTING**



**DB SLIP-THROUGH BRACKET**

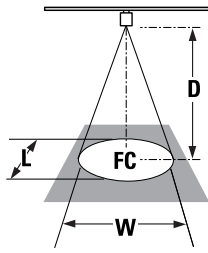


**DS DRYWALL SPACKLE FLANGE**

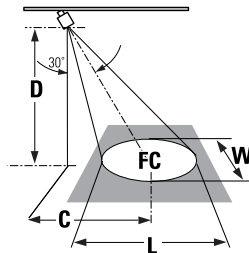


### ● PHOTOMETRIC DATA FOR ACCENT

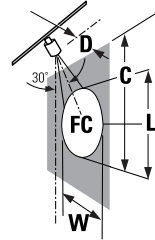
L = Beam Length  
W = Beam Width  
D = Distance  
C = Distance to Center Beam  
A = Aiming Angle  
FC = Foot Candle



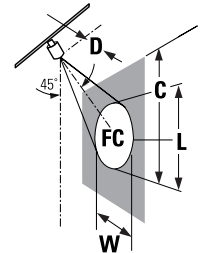
0° horizontal aiming angle






30° horizontal aiming angle



30° vertical aiming angle



45° vertical aiming angle

Beam Spread	CBCP	Rated Life (hrs.)	D	C	FC	L	W	D	C	FC	L	W	D	C	FC	L	W	D	C	FC	L	W
	2287 cd	50,000 L70	5'	0	83	2.1'	2.1'	2'	2.8'	54	2.9'	2.4'	2'	3.4'	67	3.9'	1.6'	2'	2'	185	1.7'	1.1'
			6'	0	57	2.5'	2.5'	3'	3.4'	37	3.4'	2.9'	3'	5.1'	29	5.8'	2.5'	3'	3'	80	2.6'	1.7'
			7'	0	42	2.9'	2.9'	4'	4'	27	4'	4.4'	4'	6.9'	16.4	7.8'	3.3'	4'	4'	53	3.5'	2.3'
			8'	0	32	3.4'	3.4'	5'	4.5'	21	4.6'	3.9'	5'	8.5'	11	9.8'	4.2'	5'	5'	28	4.4'	3'
	796 cd	50,000 L70	5'	0	29	3.2'	3.2'	2'	2.8'	19	4.4'	3.7'	2'	3.4'	23	7.5'	2.5'	2'	2'	64	2.8'	1.8'
			6'	0	20	3.8'	3.8'	3'	3.4'	13	5.3'	4.4'	3'	5.3'	10	11.3'	3.8'	3'	3'	28	4.3'	2.7'
			7'	0	15	4.5'	4.5'	4'	4'	9	6.2'	5.2'	4'	6.9'	6	15.3'	5.3'	4'	4'	19	5.7'	3.6'
			8'	0	11	5.3'	5.3'	5'	4.5'	7	7.3'	6'	5'	8.5'	4	19'	6.5'	5'	5'	10	4.9'	4.5'
	446 cd	50,000 L70	5'	0	16	5.7'	5.7'	2'	2.8'	11	8.5'	6.6'	2'	3.4'	13		4.5'	2'	2'	36	6.9'	3.4'
			6'	0	11	6.9'	6.9'	3'	3.4'	7	10.3'	7.9'	3'	5.3'	6		6.9'	3'	3'	16	10.3'	4.8'
			7'	0	8	8'	8'	4'	4'	5	12'	9.3'	4'	6.9'	3		9.2'	4'	4'	11	13.8'	6.5'
			8'	0	6	9.7'	9.7'	5'	4.5'	4	13.8'	10.6'	5'	8.5'	2		11.5'	5'	5'	6	17'	8'

