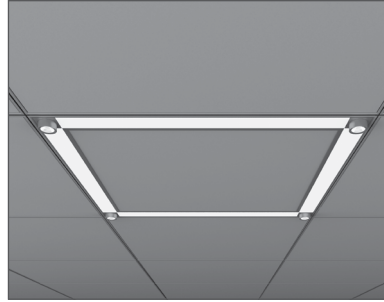
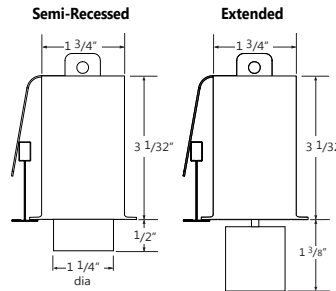
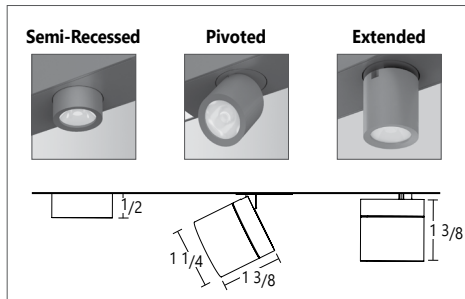


Linear option shown



Kit option shown



Project _____

Type _____

Notes _____

ACCENT PERFORMANCE

Output	500 lm nominal
Wattage	7.5W
Efficacy	Up to 75 lm/W
CBCP	2287 cd @ 24°, 796 cd @ 36°, 446 cd @ 60°
CCT	3000K
CRI	80
Life	50000 hours L ₇₀
Dimming	0-10V to 10%



A configuration drawing is required

See page 7

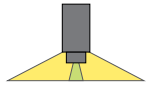
Ordering Guide

SCRLAC		NOM.LUMENS/FT for-Sculpt	CRI	COLOR TEMP.	SHIELDING for-Sculpt	LINEAR LENGTH or CEILING KIT (select one)	
PRODUCT ID							
SCRLAC	Sculpt Recessed with lens and Accent LED	300	300 lm/ft - Min	27	2700 K	FL flush* 0.5M 0.5" StepLens, lum. end cap* 0.5P 0.5" StepLens, opaque end cap* 2M 2" StepLens, lum. end cap* 2P 2" StepLens, opaque end cap* +BL(##) Blank (for flush option only) UB Ultra blend lens (flush only)** ASO asymmetric flush lens	# 2 ft - 12 ft continuous length S(L) System Run
		900	900 lm/ft - 90 CRI Max	30	3000 K		
		1000	1000 lm/ft - 80 CRI Max	35	3500 K		
				40	4000 K		
				B30	3000 K - BIOS*		
				B35	3500 K - BIOS*		
				B40	4000 K - BIOS*		
				TW2750	2700-5000 K - Tunable White		
				TW2765	2700-6500 K - Tunable White		
		Please consult factory for other lumen packages. Consult factory for max output with BIOS		* Not available with BIOS. Consult Axitone technical sheet for more information of color technology. *Consult BIOS guide for more information on BIOS technology		*Lens options use spotlight lens ** Default lens for Tunable white and BIOS. Consult factory for other lens.	
						* Available as kit; Sculpt accommodates any length. Metric lengths also available, please consult factory.	

FINISH	VOLTAGE	DRIVER for-Sculpt	CIRCUITS	MOUNTING/SUSPENSION		BATTERY (OPT.)	OTHER (OPT.)	CUSTOM (OPT.)
AP aluminum paint	120 120 V	DP dimming (0-10V) 1%	1 1 circuit	MFTB9	MiniFlange t-bar 9/16" *	ST screw slot t-bar	B(##) battery pack	C custom
277 277 V	LT Lutron		2 2 circuits	MFTB15	MiniFlange t-bar 15/16" *	TG9 regular 9/16"	4' sections	
W white	347 347 V	BI bi-level dimming		MFTS	MiniFlange screw slot t-bar *	TG15 regular 15/16"		
BLK black	UNV universal	O(##) other **		MFTG9	MiniFlange 9/16" t-regular *	DF drywall flange		
	DC low voltage*	DPB(##) dimming (0-10V) 1% with BIOS*		MFTG15	MiniFlange 15/16" t-regular *	D drywall flangeless		
		TW(##) tunable white drivers*		TB9	t-bar 9/16"	DB slip-through bracket		
		POE(##) POE drivers*		TB15	t-bar 15/16"	DS drywall spackle flange		
		* Specify system, see page 3. ** Please consult factory		* Must select from these options when ordering kits. See page 3 for more details.		Not available with 347V Please consult factory		Please specify

Accent Ordering Guide

AC (QTY, Beam, CRI, Color temp., Shielding, Driver, Finish)							
ACCENT QTY	BEAM	CRI	COLOR TEMP.	OPTIC- for ACCENT	DRIVER - for ACCENT	FINISH	
AC(##) Accent quantity	D24 24 deg	80 80 CRI	27 2700 K	ST standard	D dimming (0-10V) 10%	AP aluminum paint	
	D36 36 deg	90 90 CRI	30 3000 K	HX hexcell*		W white	
	D60 60 deg		35 3500 K			BLK black	
	CBS custom arrangement*		40 4000 K				
		*All Accents on a module will have the same beam spread. Consult factory for custom beam spreads arrangements. Final beam spread arrangements will be specified on shop drawings		Please note that Accents are only available in Fixed CCT		*1/8" extended insert	



LED SYSTEM - for ACCENT

CRI	Minimum 80 or 90 color rendering index
CCT	Choice of 2700K, 3000K, 3500K and 4000K color temperature with a great color consistency (within 3.0-step MacAdam ellipse).
LED life	Minimum 50,000h with 70% of lumen maintenance in 25°C ambient temperature, in compliance with IES LM-80 testing measurements.
Thermal Management	Aluminum housing acting as the heat sink to maximize life.

CONSTRUCTION

Housing	Extruded aluminum (0.080" nominal)
End Cap	Die cast aluminum
Interior Brackets	Die formed sheet steel (20 gauge)
Reflectors	White powder coated sheet steel (22 gauge)
Lenses	Extruded acrylic (0.060" nominal) - injection moulded
Hanger	Die cast aluminum
Suspension	Sliding aircraft cable along product length
Cable Grips	Quick connecting / release

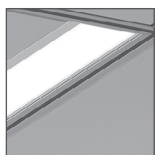
ELECTRICAL - for ACCENT

Input Voltage 120V, 277V, UNV.

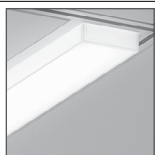
WARRANTY

Limited 5-year warranty is available. Warranty is valid provided luminaires are installed and used according to specifications. For full terms and conditions, please consult warranty section at axislighting.com.

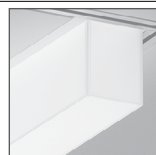
SHIELDING - Frosted acrylic Spotless lens



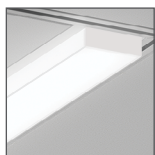
FL flush
UB ultrablend lens
ASO asymmetric lens



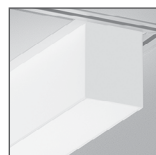
0.5M 0.5" StepLens, lum. end cap



2M 2" StepLens, lum. end cap



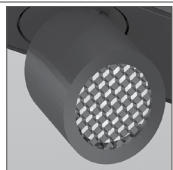
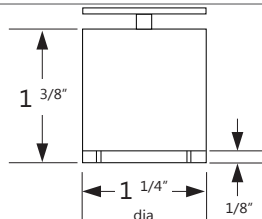
0.5P 0.5" StepLens, opaque end cap



2P 2" StepLens, opaque end cap



HEXCELL SHIELDING OPTIONS



SAFETY NOTE

Although Accent lamps operate at cooler temperatures than halogen lamps, it is recommended that gloves be worn when adjusting Accents that have been energized.

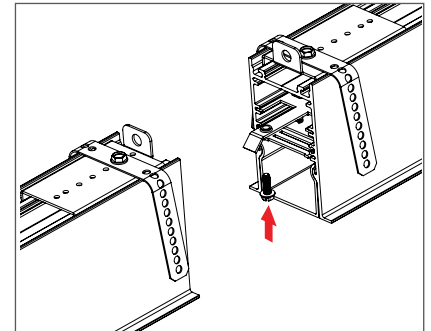
***Patent Number: 9416535 B1**

WEIGHT

4 ft	8 lbs / 3.6 kg
8 ft	16 lbs / 7.3 kg
12 ft	24 lbs / 10.9 kg

JOINERS

In order to allow very long runs of SCULPT luminaires, Axis has developed an effective joining system. Special care has been taken to maximize the performance of the joiner for each SCULPT option.



NOTE: Mount each system segment individually. Do not assemble system prior to mounting.

i Allow a minimum of 6" between end of long runs and vertical wall

APPROVALS

Certified to UL and CUL standards
Suitable for damp locations.



SYSTEM (S#)

SCULPT linear systems, with the use of a strong profile, allow for a nearly hair thin connection system of continuous runs. Lengths of 4', 8', 12' as well as custom lengths are available. Runs of SCULPT that are greater than 12' in length are designated as systems (S#). This means that the run is comprised of a combination of 4', 8' and/or 12' sections to be assembled on site using our joining system. For more information on systems and joining, please refer to the SCULPT installation sheets available for download at www.axislighting.com.

BEAM SPREADS

Beam Spread	24°	36°	60°
CBCP	2287 cd	796 cd	446 cd

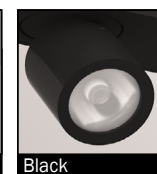
FINISHES



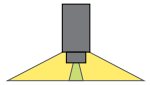
Aluminum paint



White



Black



● ELECTRICAL - for SCULPT

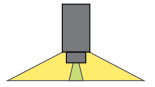
Lutron driver	LDE1 - Hi-lume 1% EcoSystem with Soft-on, Fade-to-Black
Other drivers**	DALI - Digital Addressable Lighting Interface DMX - Digital Multiplex LV - line voltage - Advance Mark 10 Xitanium SR - For wireless sensor
BIOS DPB drivers*	STC - BIOS control 0-10V with static spectrum and BIOS SkyBlue enabled from 100% to 1%. DYN- BIOS control 0-10V with dynamic spectrum and BIOS SkyBlue® with Bio-Dimming™ enabled 100% to 50%, light output dimming from 49% to 1%.
Tunable White TW drivers*	DALIDT6 - DALI Type 6 (Two DALI Addresses) DALIDT8 - DALI Type 8 (One DALI Address)
Power over Ethernet POE drivers*	MOLEX IGOR SMARTENGINE O - Other (Consult factory)
Emergency	Integral emergency battery pack or emergency circuit optional.
Input Voltage	120V, 277V, 347V, UNV, DC.

*Choose driver from available options.

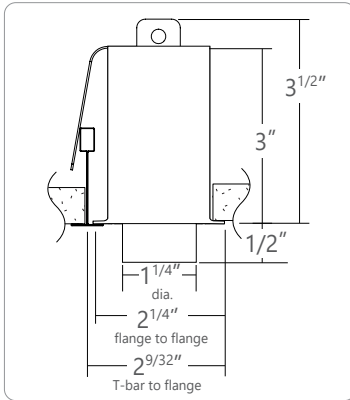
i Incorporating these components may have limitations or affect the length of the luminaire. Please contact factory for more details.

● LED SYSTEM - for SCULPT

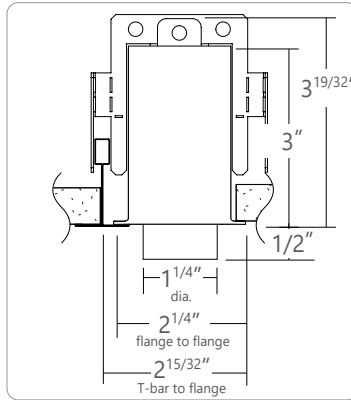
CRI	Minimum 80 or 90 color rendering index.
CRI BIOS	Minimum 80 color rendering index with R9>75 for all CCTs.
CCT Single Color	Choice of 2700K, 3000K, 3500K and 4000K color temperature with a great color consistency (within 3-step MacAdam ellipse). Both within fixture and fixture to fixture.
CCT BIOS	BIOS Static (STC) Choice of 3000K, 3500K and 4000K. BIOS SkyBlue® Dynamic (DYN) Choice of 3000K, 3500K, and 4000K with Bio-Dimming™ Consult BIOS guide for more information on BIOS technology.
CCT Axitune Systems	Consult Axitune technical sheet for more information on color technology.
LED life	Minimum 50,000h with 85% of lumen maintenance in 25°C ambient temperature, in compliance with IES LM-80 testing measurements.
Thermal Management	Aluminum housing acting as the heat sink to maximize life.
Environment	Dry and damp rated for indoor use only in operating ambient temperatures of 0-40°C



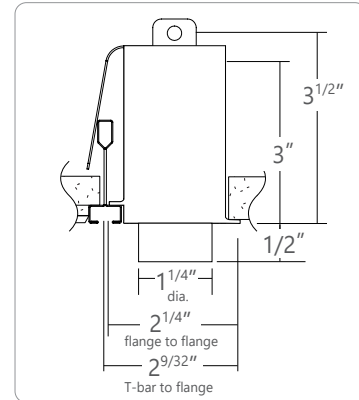
● KIT AND LINEAR - WITH INTEGRATED



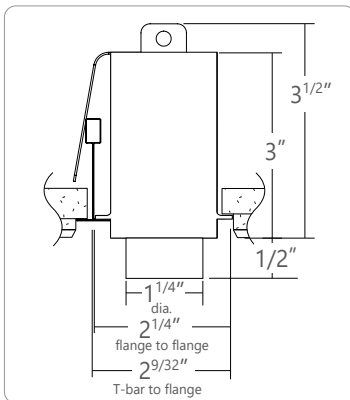
MFTB9 MiniFlange 9/16" T-BAR



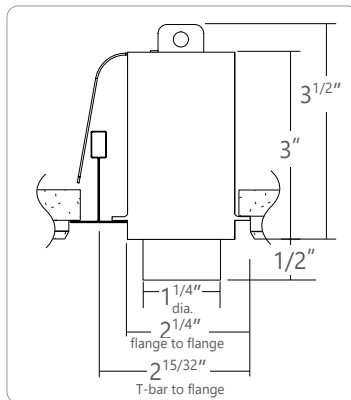
MFTB15 MiniFlange 15/16" T-BAR



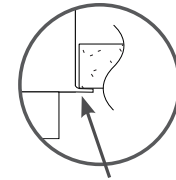
MFST MiniFlange SCREW SLOT T-BAR



MFTG9 MiniFlange 9/16" T-TEGULAR



MFTG15 MiniFlange 15/16" T-TEGULAR

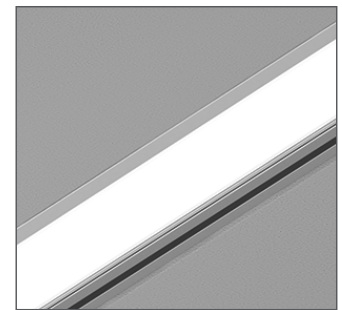


MiniFlange

Integrated MiniFlange (patent pending)

When installed along T-bars in acoustic ceilings, the Integrated MiniFlange supports adjacent ceiling tiles. At the same time, it **eliminates the need for a second T-bar**. This feature comes standard on Sculpt Recessed.

- Fewer materials needed and less labor.
- Conceals ceiling tile cutline for a cleaner appearance.
- Simplifies drawings and trade coordination.
- Available in different T-bar profiles.

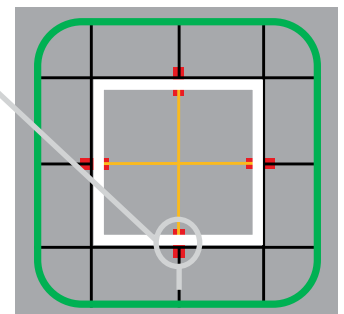


With Integrated MiniFlange

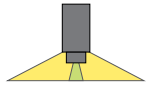
The T-Aligner™ (patent pending)

- Foolproof solution for a perfectly aligned ceiling grid.
- Connects cut T-bars on either side of a Sculpt luminaire or ceiling kit.
- No need to specify – Comes standard with Sculpt Recessed.
- Compatible with all T-bar profiles including slot and Tegralar (9/16" and 15/16").

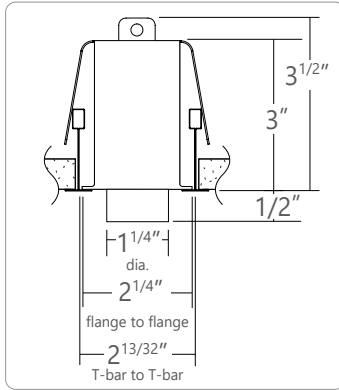
T-Aligners are installed where T-bars intersect the luminaire or ceiling kit.



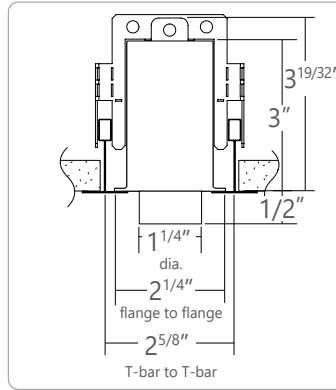
View from above ceiling



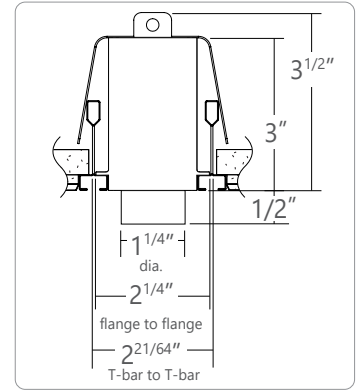
STANDARD T-BAR CEILING MOUNTING OPTIONS



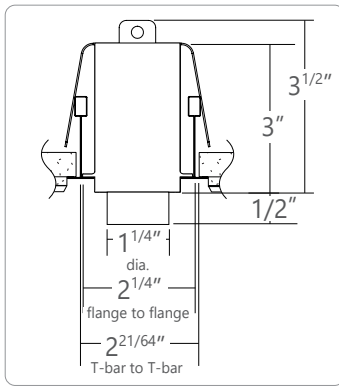
TB9 9/16" T-BAR



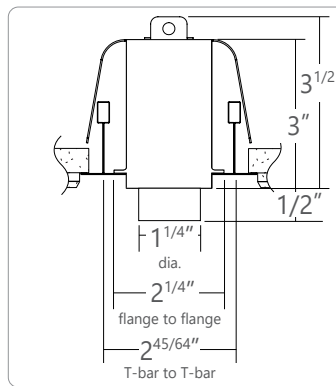
TB15 15/16" T-BAR



ST SCREW SLOT T-BAR

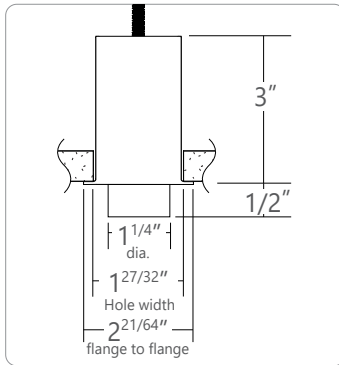


TG9 9/16" T-TEGULAR

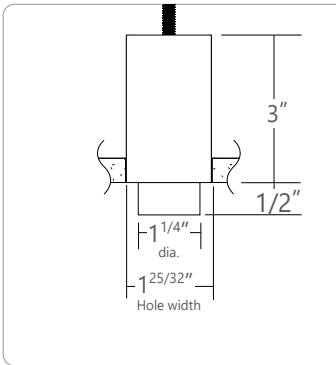


TG15 15/16" TEGULAR

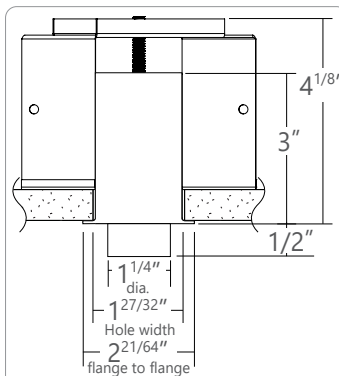
DRYWALL CEILING MOUNTING OPTIONS



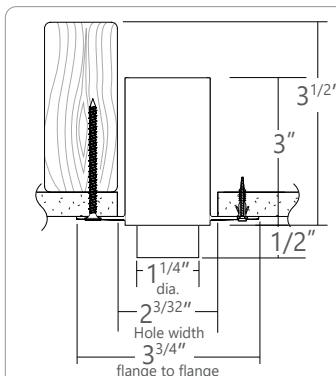
DF VISIBLE FLANGES WITH 1/4-20 STUD MOUNTING



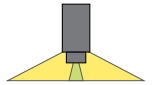
D FLANGELESS WITH 1/4-20 STUD MOUNTING



DB SLIP-THROUGH BRACKET

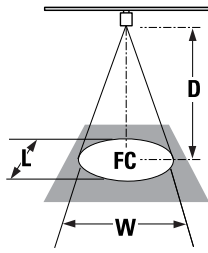


DS DRYWALL SPACKLE FLANGE

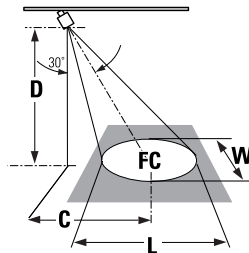


● PHOTOMETRIC DATA FOR ACCENT

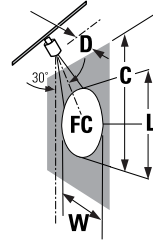
L = Beam Length
W = Beam Width
D = Distance
C = Distance to Center Beam
A = Aiming Angle
FC = Foot Candle



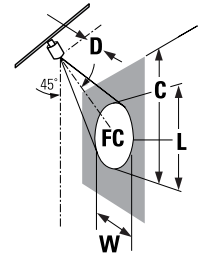
0° horizontal aiming angle






30° horizontal aiming angle



30° vertical aiming angle



45° vertical aiming angle

Beam Spread	CBCP	Rated Life (hrs.)	D	C	FC	L	W	D	C	FC	L	W	D	C	FC	L	W	D	C	FC	L	W
	2287 cd	50,000 L70	5'	0	83	2.1'	2.1'	2'	2.8'	54	2.9'	2.4'	2'	3.4'	67	3.9'	1.6'	2'	2'	185	1.7'	1.1'
			6'	0	57	2.5'	2.5'	3'	3.4'	37	3.4'	2.9'	3'	5.1'	29	5.8'	2.5'	3'	3'	80	2.6'	1.7'
			7'	0	42	2.9'	2.9'	4'	4'	27	4'	4.4'	4'	6.9'	16.4	7.8'	3.3'	4'	4'	53	3.5'	2.3'
			8'	0	32	3.4'	3.4'	5'	4.5'	21	4.6'	3.9'	5'	8.5'	11	9.8'	4.2'	5'	5'	28	4.4'	3'
	796 cd	50,000 L70	5'	0	29	3.2'	3.2'	2'	2.8'	19	4.4'	3.7'	2'	3.4'	23	7.5'	2.5'	2'	2'	64	2.8'	1.8'
			6'	0	20	3.8'	3.8'	3'	3.4'	13	5.3'	4.4'	3'	5.3'	10	11.3'	3.8'	3'	3'	28	4.3'	2.7'
			7'	0	15	4.5'	4.5'	4'	4'	9	6.2'	5.2'	4'	6.9'	6	15.3'	5.3'	4'	4'	19	5.7'	3.6'
			8'	0	11	5.3'	5.3'	5'	4.5'	7	7.3'	6'	5'	8.5'	4	19'	6.5'	5'	5'	10	4.9'	4.5'
	446 cd	50,000 L70	5'	0	16	5.7'	5.7'	2'	2.8'	11	8.5'	6.6'	2'	3.4'	13		4.5'	2'	2'	36	6.9'	3.4'
			6'	0	11	6.9'	6.9'	3'	3.4'	7	10.3'	7.9'	3'	5.3'	6		6.9'	3'	3'	16	10.3'	4.8'
			7'	0	8	8'	8'	4'	4'	5	12'	9.3'	4'	6.9'	3		9.2'	4'	4'	11	13.8'	6.5'
			8'	0	6	9.7'	9.7'	5'	4.5'	4	13.8'	10.6'	5'	8.5'	2		11.5'	5'	5'	6	17'	8'

