

Linear option shown



Kit option shown

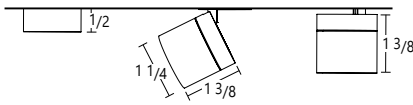
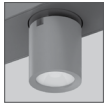
Semi-Recessed



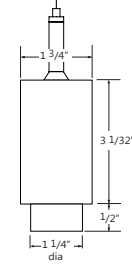
Pivoted



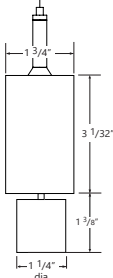
Extended



Semi-Recessed



Extended



Project \_\_\_\_\_

Type \_\_\_\_\_

Notes \_\_\_\_\_

## ACCENT PERFORMANCE

|          |   |
|----------|---|
| Output   | 500 lm nominal                            |
| Wattage  | 7.5W                                      |
| Efficacy | Up to 75 lm/W                             |
| CBCP     | 2287 cd @ 24°, 796 cd @ 36°, 446 cd @ 60° |
| CCT      | 3000K                                     |
| CRI      | 80  |
| Life     | 50000 hours L <sub>70</sub>               |
| Dimming  | 0-10V to 10%                              |



A configuration drawing is required

See page 7



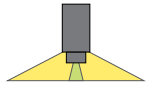
## Ordering Guide

| SCDLAC     |  |   |                         |                            |         |  |                |  |                                |   |   |               |
|------------|--|---|-------------------------|----------------------------|---------|--|----------------|--|--------------------------------|---|---|---------------|
| PRODUCT ID |  | NOM.LUMENS/FT - for SCULPT  |                         | CRI                        |         | COLOR TEMP.  |                | SHIELDING - for SCULPT   |                                | LINEAR LENGTH or CEILING KIT (select one)   |   |               |
| SCDLAC     | Sculpt Pendant Direct with lens and LED Accent | 300   | 300 lm/ft - Min         | 80                         | 80 CRI  | 27   | 2700 K         | FL   | flush*                         | S(L)  | # 2 ft - 12 ft continuous length System Run | L L shape 2** |
|            |  | 900   | 900 lm/ft - 90 CRI Max  | 90                         | 90 CRI* | 30   | 3000 K         | RG   | 0.5" regressed**               |   | U U shape 2**                               |               |
|            |  | 1000  | 1000 lm/ft - 80 CRI Max |                            |         | 35   | 3500 K         | 0.5M   | 0.5" Steplens, lum. end cap*   |   | 2x2 2'x2' *                                 |               |
|            |  |   |                         |                            |         | 40   | 4000 K         | 0.5P   | 0.5" Steplens, opaque end cap* |   | 2x4 2'x4' *                                 |               |
|            |  |   |                         |                            |         | B30  | 3000 K - BIOS* | 2M   | 2" Steplens, lum. end cap*     |   | 2x6 2'x6' *                                 |               |
|            |  |   |                         |                            |         | B35  | 3500 K - BIOS* | 2P   | 2" Steplens, opaque end cap*   |   | 2x8 2'x8' *                                 |               |
|            |  |   |                         |                            |         | B40  | 4000 K - BIOS* | +BL(#) Blank (for flush option only)   |                                |   | 2x10 2'x10' *                               |               |
|            |  |   |                         |                            |         | TW2750 2700-5000 K - Tunable White   |                | UB Ultra blend lens (flush only)***  |                                |   | 2x12 2'x12' *                               |               |
|            |  |   |                         |                            |         | TW2765 2700-6500 K - Tunable White   |                | ASO asymmetric flush lens  |                                |   | 4x4 4'x4' *                                 |               |
|            |  |   |                         |                            |         |  |                |  |                                |   | K(#) Other kits*                            |               |
|            |  | Please consult factory for other lumen packages<br>Consult factory for max output with BIOS |                         | * Not available with BIOS. |         | <a href="#">Consult Axitune technical sheet for more information of color technology.</a><br><a href="#">*Consult BIOS guide for more information on BIOS technology</a> |                | *Lens options use spotless lens<br>** Note that accent pivoted angle is reduced to 30°, see page 4 for more information.<br>*** Default lens for Tunable white and BIOS. Consult factory for other lens. |                                | * Available as kit; Sculpt accommodates any length; Metric lengths also available, consult factory. |   |               |

| FINISH   |            | VOLTAGE   |               | DRIVER - for SCULPT                           |  | CIRCUITS                                  |                | MOUNTING/SUSPENSION  |  | BATTERY (OPT.)   |                 | CUSTOM (OPT.)  |  |
|--|------------|---|---------------|---|--|---|----------------|--|--|--|-----------------|----------------|--|
| <b>AP</b> aluminum paint<br><b>W</b> white<br><b>BLK</b> black | <b>120</b> | 120 V   | <b>DP</b>     | dimming (0-10V) 1%                            |  | <b>1</b> 1 circuit<br><b>2</b> 2 circuits | <b>CA(#)</b>   | drywall+cable length (36" std.)  |  | <b>B(#)</b> battery pack<br>4' sections                  | <b>C</b> custom |                |  |
|  | <b>277</b> | 277 V   | <b>LT</b>     | Lutron  |  |   | <b>CT9(#)</b>  | TB/TG 9/16+cable length (36" std.)   |  |  |                 |                |  |
|  | <b>347</b> | 347 V   | <b>BI</b>     | bi-level dimming                              |  |   | <b>CT15(#)</b> | TB/TG15/16+cable length (36" std.)   |  |  |                 |                |  |
|  | <b>UNV</b> | universal   | <b>O(#)</b>   | other **                                      |  |   | <b>CTS(#)</b>  | screw slot+cable length (36" std.)   |  |  |                 |                |  |
|  | <b>DC</b>  | low voltage*  | <b>DPB(#)</b> | dimming (0-10V) 1% with BIOS*                 |  |   | <b>SA(#)</b>   | drywall+stem length >48" (18" std.)*   |  |  |                 |                |  |
|  |            |   | <b>TW(#)</b>  | tunable white drivers*                        |  |   | <b>CASL(#)</b> | drywall cable sloped ceiling   |  |  |                 |                |  |
|  |            |   | <b>POE(#)</b> | POE drivers*                                  |  |   | <b>SASL(#)</b> | drywall stem sloped ceiling*   |  |  |                 |                |  |
|  |            |   |               |   |  |   | <b>+SM</b>     | seismic kit  |  |  |                 |                |  |
|  |            | Applies to both Accent and Sculpt<br>* Only available with POE drivers. |               | * Specify system<br>** Please consult factory |  |   |                | <a href="#">See Mounting kit guide for full specification code.</a><br>Specify length<br>*For stem option, please consult factory. |  | Not available with 347V<br><b>Please consult factory</b> |                 | Please specify |  |

## Accent Ordering Guide

| AC (QTY, Beam, CRI, Color temp., Shielding, Driver, Finish)  |                         |  |             |                       |                       |                   |  |
|--|-------------------------|--|-------------|-----------------------|-----------------------|-------------------|--|
| ACCENT QTY   | BEAM                    | CRI  | COLOR TEMP. | OPTIC - for ACCENT    | DRIVER - for ACCENT   | FINISH            |  |
| AC(#) Accent quantity  | D24 24 deg              | 80 80 CRI  | 27 2700 K   | ST standard           | D dimming (0-10V) 10% | AP aluminum paint |  |
|  | D36 36 deg              | 90 90 CRI  | 30 3000 K   | HX hexcell*           |                       | W white           |  |
|  | D60 60 deg              |  | 35 3500 K   |                       |                       | BLK black         |  |
|  | CBS custom arrangement* |  | 40 4000 K   |                       |                       |                   |  |
| *All Accents on a module will have the same beam spread. Consult factory for custom beam spreads arrangements. Final beam spread arrangements will be specified on shop drawings |                         | Please note that Accents are only available in Fixed CCT |             | *1/8" extended insert |                       |                   |  |



### LED SYSTEM - for ACCENT

|                           |   |
|---------------------------|---|
| <b>CRI</b>                | Minimum 80 or 90 color rendering index  |
| <b>CCT</b>                | Choice of 2700K, 3000K, 3500K and 4000K color temperature with a great color consistency (within 3.0-step MacAdam ellipse).   |
| <b>LED life</b>           | Minimum 50,000h with 70% of lumen maintenance in 25°C ambient temperature, in compliance with IES LM-80 testing measurements. |
| <b>Thermal Management</b> | Aluminum housing acting as the heat sink to maximize life.  |

### CONSTRUCTION

|                          |   |
|--------------------------|---|
| <b>Housing</b>           | Extruded aluminum (0.080" nominal)                    |
| <b>End Cap</b>           | Die cast aluminum                                     |
| <b>Interior Brackets</b> | Die formed sheet steel (20 gauge)                     |
| <b>Reflectors</b>        | White powder coated sheet steel (22 gauge)            |
| <b>Lenses</b>            | Extruded acrylic (0.060" nominal) - injection moulded |
| <b>Hanger</b>            | Die cast aluminum                                     |
| <b>Suspension</b>        | Sliding sircraft cable along product length           |
| <b>Cable Grips</b>       | Quick connecting / release                            |

### ELECTRICAL - for ACCENT

**Input Voltage** 120V, 277V, UNV.

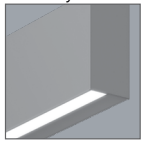
### WARRANTY

Limited 5-year warranty is available. Warranty is valid provided luminaires are installed and used according to specifications. For full terms and conditions, please consult warranty section at [axislighting.com](http://axislighting.com).

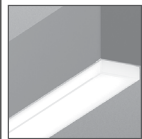
### SHIELDING - Frosted acrylic spotless lens



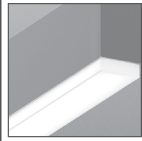
**FL** flush  
**UB** ultrablend lens  
**ASO** asymmetric lens



**RG** 0.5" Regressed



**0.5M** 0.5" StepLens,  
lum. end cap



**0.5P** 0.5" StepLens,  
opaque end cap



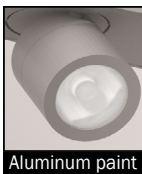
**2M** 2" StepLens,  
lum. end cap



**2P** 2" StepLens,  
opaque end cap



### FINISHES



Aluminum paint



White



Black

### SAFETY NOTE

Although LED Accents operate at cooler temperatures than halogen lamps, it is recommended that gloves be worn when adjusting Accents that have been energized.

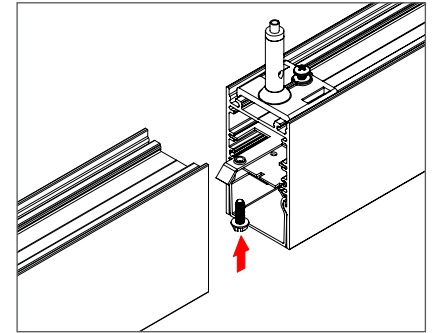
**\*Patent Number: 9416535 B1**

### WEIGHT

|              |                  |
|--------------|------------------|
| <b>4 ft</b>  | 8 lbs / 3.6 kg   |
| <b>8 ft</b>  | 16 lbs / 7.3 kg  |
| <b>12 ft</b> | 24 lbs / 10.9 kg |

### JOINERS

In order to allow very long runs of SCULPT luminaires, Axis has developed an effective joining system. Special care has been taken to maximize the performance of the joiner for each SCULPT option.



**NOTE:** Mount each system segment individually. Do not assemble system prior to mounting.

**i** Allow a minimum of 6" between end of long runs and vertical wall

### APPROVALS

Certified to UL and CUL standards  
Suitable for damp locations.



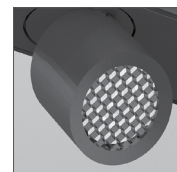
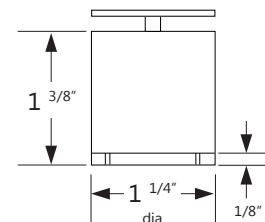
### SYSTEM (S#)

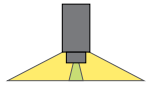
SCULPT linear systems, with the use of a strong profile, allow for a nearly hair thin connection system of continuous runs. Lengths of 4', 8', 12' as well as custom lengths are available. Runs of SCULPT that are greater than 12' in length are designated as systems (S#). This means that the run is comprised of a combination of 4', 8' and/or 12' sections to be assembled on site using our joining system. For more information on systems and joining, please refer to the SCULPT installation sheets available for download at [www.axislighting.com](http://www.axislighting.com).

### BEAM SPREADS

| Beam Spread | 24°     | 36°    | 60°    |
|-------------|---------|--------|--------|
| <b>CBCP</b> | 2287 cd | 796 cd | 446 cd |

### HEXCELL SHIELDING OPTIONS





## ● ELECTRICAL - for SCULPT

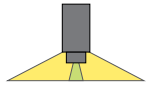
|   |   |
|---|---|
| <b>Lutron driver</b>                    | LDE1 - Hi-lume 1% EcoSystem with Soft-on, Fade-to-Black   |
| <b>Other drivers**</b>                  | DALI - Digital Addressable Lighting Interface<br>DMX - Digital Multiplex<br>LV - line voltage - Advance Mark 10<br>Xitanium SR - For wireless sensor  |
| <b>BIOS DPB drivers*</b>                | STC - BIOS control 0-10V with static spectrum and BIOS SkyBlue enabled from 100% to 1%.<br>DYN - BIOS control 0-10V with dynamic spectrum and BIOS SkyBlue® with Bio-Dimming™ enabled 100% to 50%, light output dimming from 49% to 1%. |
| <b>Tunable White TW drivers*</b>        | DALIDT6 - DALI Type 6 (Two DALI Addresses)<br>DALIDT8 - DALI Type 8 (One DALI Address)  |
| <b>Power over Ethernet POE drivers*</b> | MOLEX<br>IGOR<br>SMARTENGINE<br>O - Other (Consult factory)   |
| <b>Emergency</b>                        | Integral emergency battery pack or emergency circuit optional.  |
| <b>Input Voltage</b>                    | 120V, 277V, 347V, UNV, DC.  |

\*Choose driver from available options.

**i** Incorporating these components may have limitations or affect the length of the luminaire. Please contact factory for more details.

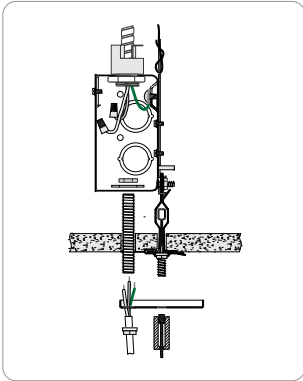
## ● LED SYSTEM - for SCULPT

|                            |   |
|----------------------------|---|
| <b>CRI</b>                 | Minimum 80 or 90 color rendering index.   |
| <b>CRI BIOS</b>            | Minimum 80 color rendering index with R9>75 for all CCTs.   |
| <b>CCT Single Color</b>    | Choice of 2700K, 3000K, 3500K and 4000K color temperature with a great color consistency (within 3-step MacAdam ellipse). Both within fixture and fixture to fixture.   |
| <b>CCT BIOS</b>            | BIOS Static (STC) Choice of 3000K, 3500K and 4000K.<br>BIOS SkyBlue® Dynamic (DYN) Choice of 3000K, 3500K, and 4000K with Bio-Dimming™<br><br><a href="#">Consult BIOS guide for more information on BIOS technology.</a> |
| <b>CCT Axitune Systems</b> | <a href="#">Consult Axitune technical sheet for more information on color technology.</a>   |
| <b>LED life</b>            | Minimum 50,000h with 85% of lumen maintenance in 25°C ambient temperature, in compliance with IES LM-80 testing measurements.   |
| <b>Thermal Management</b>  | Aluminum housing acting as the heat sink to maximize life.  |
| <b>Environment</b>         | Dry and damp rated for indoor use only in operating ambient temperatures of 0-40°C  |

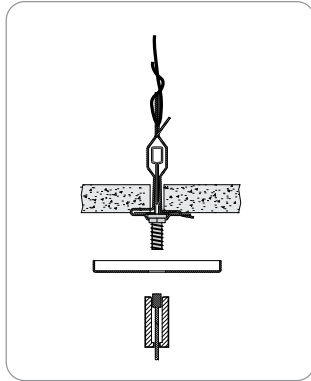


### ● MOUNTING OPTIONS

#### GT TILE CEILING - ON GRID

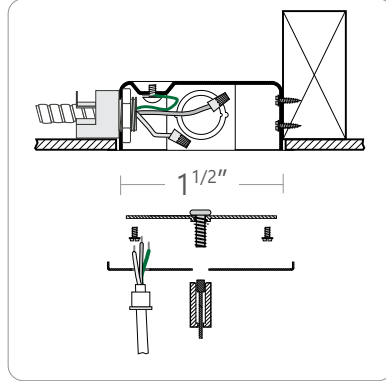


Power feed

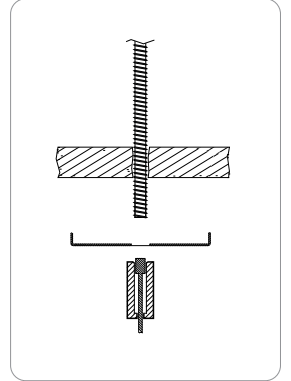


Non power feed

#### CA DRYWALL CEILING

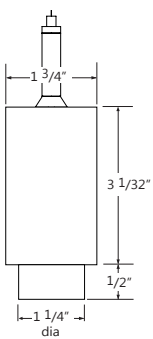


Power feed

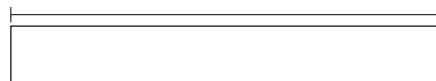


Non power feed

### ● NOMINAL MOUNTING SPACING END TO END

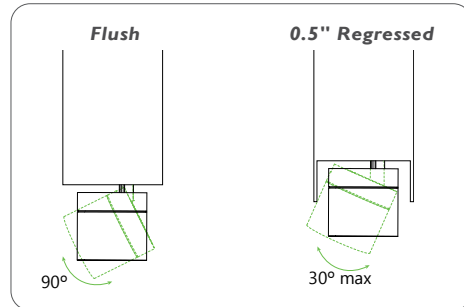


4' (47 3/8" C.C.)  
8' (95 3/8" C.C.)  
12' (143 3/8" C.C.)



Please see shopdrawing for exact mounting distances.

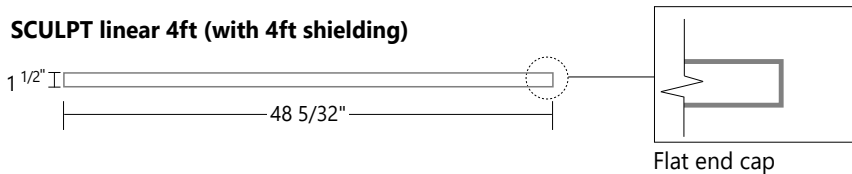
### ● ACCENT PIVOT ANGLE DEGREES



Please note that accent pivot degree is reduced to 30°, if used with RG - 0.5" Regressed optic.

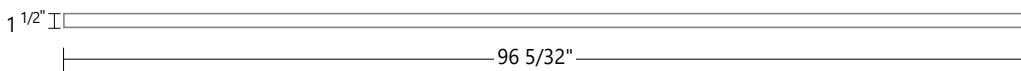
### ● NOMINAL LENGTHS (Please see shopdrawing for exact lengths)

#### SCULPT linear 4ft (with 4ft shielding)

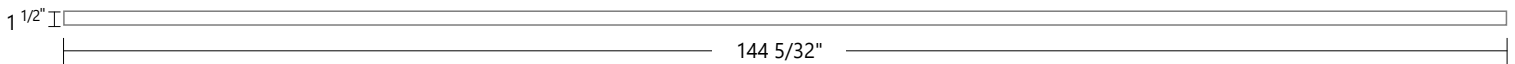


Flat end cap

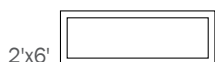
#### SCULPT linear 8ft Continuous (with 8ft shielding)



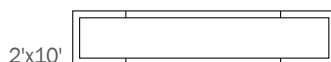
#### SCULPT linear 12ft (with 4ft shielding)



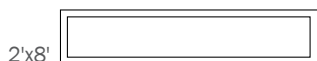
#### Sculpt Kits Continuous



2'x6'



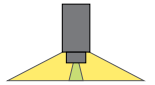
2'x10'



2'x8'

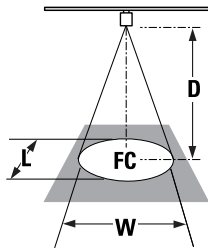


2'x12'

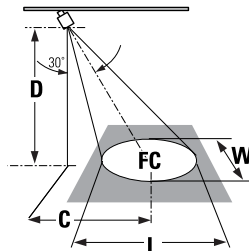


### ● PHOTOMETRIC DATA FOR ACCENT

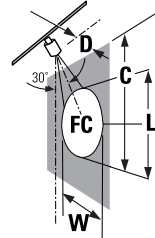
L = Beam Length  
W = Beam Width  
D = Distance  
C = Distance to Center Beam  
A = Aiming Angle  
FC = Foot Candle



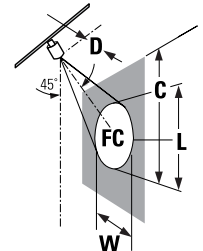
0° horizontal aiming angle






30° horizontal aiming angle



30° vertical aiming angle



45° vertical aiming angle

| Beam Spread   | CBCP    | Rated Life (hrs.) | D  | C | FC | L    | W    | D  | C    | FC | L     | W     | D  | C    | FC   | L     | W     | D  | C  | FC  | L     | W    |
|---|---------|-------------------|----|---|----|------|------|----|------|----|-------|-------|----|------|------|-------|-------|----|----|-----|-------|------|
|    | 2287 cd | 50,000 L70        | 5' | 0 | 83 | 2.1' | 2.1' | 2' | 2.8' | 54 | 2.9'  | 2.4'  | 2' | 3.4' | 67   | 3.9'  | 1.6'  | 2' | 2' | 185 | 1.7'  | 1.1' |
|   |         |                   | 6' | 0 | 57 | 2.5' | 2.5' | 3' | 3.4' | 37 | 3.4'  | 2.9'  | 3' | 5.1' | 29   | 5.8'  | 2.5'  | 3' | 3' | 80  | 2.6'  | 1.7' |
|   |         |                   | 7' | 0 | 42 | 2.9' | 2.9' | 4' | 4'   | 27 | 4'    | 4.4'  | 4' | 6.9' | 16.4 | 7.8'  | 3.3'  | 4' | 4' | 53  | 3.5'  | 2.3' |
|   |         |                   | 8' | 0 | 32 | 3.4' | 3.4' | 5' | 4.5' | 21 | 4.6'  | 3.9'  | 5' | 8.5' | 11   | 9.8'  | 4.2'  | 5' | 5' | 28  | 4.4'  | 3'   |
|    | 796 cd  | 50,000 L70        | 5' | 0 | 29 | 3.2' | 3.2' | 2' | 2.8' | 19 | 4.4'  | 3.7'  | 2' | 3.4' | 23   | 7.5'  | 2.5'  | 2' | 2' | 64  | 2.8'  | 1.8' |
|   |         |                   | 6' | 0 | 20 | 3.8' | 3.8' | 3' | 3.4' | 13 | 5.3'  | 4.4'  | 3' | 5.3' | 10   | 11.3' | 3.8'  | 3' | 3' | 28  | 4.3'  | 2.7' |
|   |         |                   | 7' | 0 | 15 | 4.5' | 4.5' | 4' | 4'   | 9  | 6.2'  | 5.2'  | 4' | 6.9' | 6    | 15.3' | 5.3'  | 4' | 4' | 19  | 5.7'  | 3.6' |
|   |         |                   | 8' | 0 | 11 | 5.3' | 5.3' | 5' | 4.5' | 7  | 7.3'  | 6'    | 5' | 8.5' | 4    | 19'   | 6.5'  | 5' | 5' | 10  | 4.9'  | 4.5' |
|  | 446 cd  | 50,000 L70        | 5' | 0 | 16 | 5.7' | 5.7' | 2' | 2.8' | 11 | 8.5'  | 6.6'  | 2' | 3.4' | 13   |       | 4.5'  | 2' | 2' | 36  | 6.9'  | 3.4' |
|   |         |                   | 6' | 0 | 11 | 6.9' | 6.9' | 3' | 3.4' | 7  | 10.3' | 7.9'  | 3' | 5.3' | 6    |       | 6.9'  | 3' | 3' | 16  | 10.3' | 4.8' |
|   |         |                   | 7' | 0 | 8  | 8'   | 8'   | 4' | 4'   | 5  | 12'   | 9.3'  | 4' | 6.9' | 3    |       | 9.2'  | 4' | 4' | 11  | 13.8' | 6.5' |
|   |         |                   | 8' | 0 | 6  | 9.7' | 9.7' | 5' | 4.5' | 4  | 13.8' | 10.6' | 5' | 8.5' | 2    |       | 11.5' | 5' | 5' | 6   | 17'   | 8'   |

