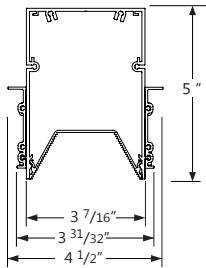




TR - trapeze shielding shape



TR - trapeze regress

Project \_\_\_\_\_

Type \_\_\_\_\_

Notes \_\_\_\_\_

### PERFORMANCE PER LINEAR FOOT AT 3500K

DISTRIBUTION	NOMINAL LUMEN OUTPUT		INPUT WATTS	EFFICACY	SHIELDING
	UP	DOWN			
0up/100down at 1000 lm/ft	-	1000 lm/ft	9.2 w/ft	109 lm/w	MSO

\* Based on a 4 foot luminaire using one driver  
Please consult factory for custom lumen output and wattage



### Ordering Guide

ZERLED		TR								MSO			
PRODUCT ID		SHIELDING SHAPE		NOMINAL LUMENS/FT		CRI		COLOR TEMP.		SHIELDING		FIXTURE LENGTH	
ZERLED	Zen Recessed LED	TR	trapeze regress*	400	400 lm/ft - Minimum	80	80 CRI	27	2700 K	MSO	microgroove spotless lens	2	2'
				1000	1000 lm/ft - Maximum	90	90 CRI	30	3000 K			3	3'
								35	3500 K			4	4'
								40	4000 K			5	5'
												6	6'
												7	7'
												8	8'
												5(L)	12' system run
		* All shieldings use MSO - microgroove spotless lens.		Outputs between listed min and max are available. Consult factory for outputs outside of the listed range.									

FINISH		VOLTAGE		DRIVER		CIRCUITS	
W	white	120	120 V	DP	dimming (0-10V) 1%	1	1 circuit
BLK	black	277	277 V	LT	Lutron	+E(#)	emergency section
C	custom	347	347 V	BI	bi-level dimming		
		UNV	universal	O(#)	other**		
		DC	low voltage*	POE(#)	POE drivers*		
		Consult factory for 347 V * Only available with POE drivers		* Specify system, see page 2 ** Please consult factory, see page 2			

MOUNTING/SUSPENSION	BATTERY (OPTIONAL)	OTHER (OPTIONAL)	REMOTE CONTROLS (OPTIONAL)	CUSTOM
<b>TB9</b> t-bar 9/16" <b>TB15</b> t-bar 15/16" <b>ST</b> screw slot t-bar <b>TG9</b> tegular 9/16" <b>TG15</b> tegular 15/16" <b>DF</b> drywall flange <b>DS</b> drywall spackle flange	<b>B(#)</b> battery pack	<b>CP</b> Chicago plenum* <b>FW</b> flex whip (6' std)**	<b>DS(#)</b> daylight sensor <b>DOS(#)</b> daylight & occupancy sensor <b>WC(#)</b> wireless control dimming	<b>C</b> custom
Not available with 347V Please consult factory		Not available with 347V * Luminaires with Chicago plenum option are shipped with 6' of FMT cable. ** Other lengths available; please consult factory.	Remote only. <a href="#">See integrated controls guide for more details.</a>	Please specify



## ● LED UPGRADE / REPLACEMENT

All LED light engines used are field replaceable and upgradable to ensure the lighting system will last for years.

## ● LED SYSTEM

<b>CRI</b>	Minimum 80 or 90 color rendering index
<b>CCT</b>	Choice of 3000K, 3500K and 4000K color temperature with a great color consistency (within 3-step MacAdam ellipse). Both within fixture and fixture to fixture.
<b>LED life</b>	Minimum 50,000h with 85% of lumen maintenance in 25°C ambient temperature, in compliance with IES LM-80 testing measurements.
<b>Thermal Management</b>	Aluminum housing acting as the heat sink to maximize life.
<b>Environment</b>	Dry and damp rated for indoor use only in operating ambient temperatures of 0-40°C (32-104°F)

## ● ELECTRICAL

<b>Lutron driver</b>	LDE1 - Hi-lume 1% EcoSystem with Soft-on, Fade-to-Black
<b>Other drivers**</b>	DALI - Digital Addressable Lighting Interface DMX - Digital Multiplex Xitanium SR - For wireless sensor
<b>Power over Ethernet POE drivers*</b>	MOLEX IGOR UL2108 certified for integral or remote driver SMARTENGINE O - Other (Consult factory)
<b>Emergency</b>	Integral emergency battery pack or emergency circuit optional.
<b>Input Voltage</b>	120V, 277V, 347V, UNV.
<b>Flex Whip</b>	Shipped in a separate box for contractors to install

**i** Incorporating these components may have limitations or affect the length of the luminaire. Please contact factory for more details.

## ● UNIQUE ZEN SHIELDING OPTIONS

A new linear downlight optical concept. A Zen spotless optic with highly efficient and comfortable micro groove side walls for excellent shielding along and across.



**MSO** - microgroove spotless lens


## ● WEIGHT

<b>ZEN 4 ft</b>	9 lbs / 4.1 kg
<b>ZEN 8 ft</b>	18 lbs / 8.2 kg
<b>ZEN 12 ft</b>	27 lbs / 12.3 kg

## ● FINISH

White, black, aluminum paint, powder coated and custom finishes are also available.

## ● APPROVALS

Certified to UL and CSA standards  Suitable for damp locations.  
Meets CEC requirements (Chicago plenum)

## ● CONSTRUCTION

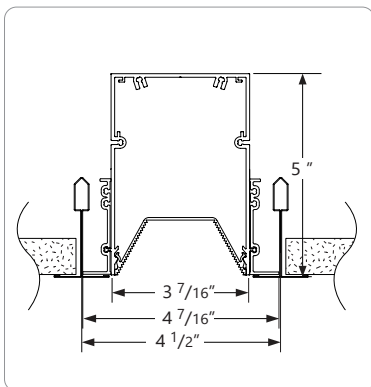
<b>Housing</b>	Extruded aluminum (0.075" nominal)
<b>End Cap</b>	Die cast aluminum (0.10" nominal)
<b>Mounting Brackets</b>	Cold rolled sheet steel painted (16 gauge)
<b>Microgroove Lens</b>	Uniform frosted acrylic lens

## ● WARRANTY

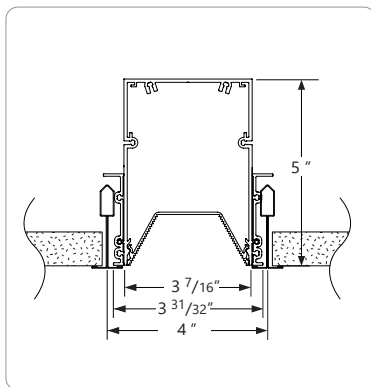
Limited 5-year warranty is available. Warranty is valid provided luminaires are installed and used according to specifications. For full terms and conditions, please consult warranty section at [axislighting.com](https://axislighting.com).



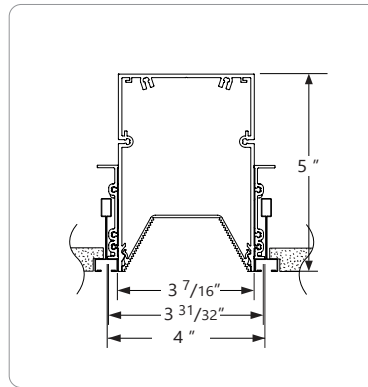
### ● TB CEILING MOUNTING OPTIONS



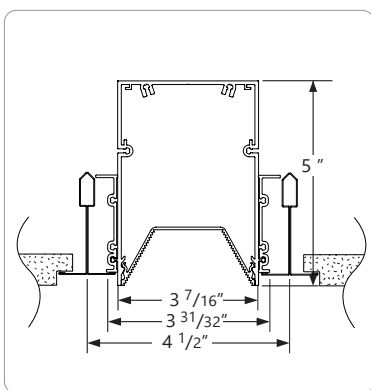
**TB15** 15/16" T-BAR



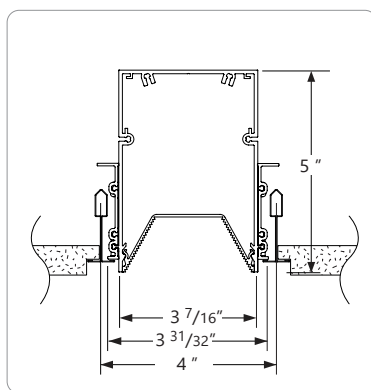
**TB9** 9/16" T-BAR



**ST** SCREW SLOT T-BAR

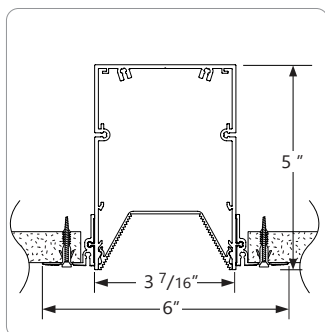


**TG15** 15/16" TEGULAR

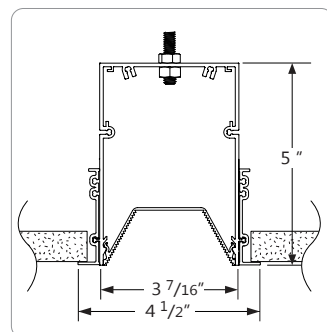


**TG9** 9/16" T-TEGULAR

### ● DRYWALL CEILING MOUNTING OPTIONS



**DS** SPACKLE FLANGES

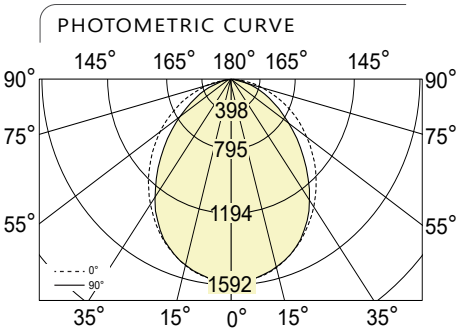


**DF** VISIBLE FLANGES WITH  
1/4-20 STUD MOUNTING

**i** Specification sheets and installation sheets for all mountings for ZEN luminaires are available for download at [www.axislighting.com](http://www.axislighting.com)

● PHOTOMETRIC DATA

TRAPEZE (TR) - 1000 lm



Lumen/ft : 1000 lm/ft  
Total Lumens: 3984 lm (for 4ft)  
Input Watts: 36.6 W  
Efficacy: 109 lm/W

CRI:80 shown  
IES FILE: ZERLED-TR-1000-80-35-MSO-4-W.IES  
TESTED ACCORDING TO IES LM-79-2008

CANDELA DISTRIBUTION					
Vertical Angle	Horizontal Angles				
	0	22.5	45	67.5	90
0	1592	1592	1592	1592	1592
5	1584	1583	1582	1582	1581
15	1518	1514	1511	1509	1510
25	1389	1383	1382	1380	1378
35	1212	1207	1205	1179	1161
45	1002	999	965	895	872
55	769	769	681	612	592
65	523	503	408	363	355
75	284	248	196	177	172
85	82	57	44	37	35
90	5	3	3	2	2

ZONAL LUMENS	
Zone	Lumens
0	
0-10	150
10-20	427
20-30	637
30-40	742
40-50	724
50-60	604
60-70	419
70-80	223
80-90	58
90	

LUMINANCE DATA (cd/m²)			
Vertical Angle	Horizontal Angles		
	0	45	90
45	10559	10162	9180
55	9985	8844	7688
65	9215	7194	6248
75	8178	5640	4937
85	6994	3736	3004

**i** All IES files are available for download at: [www.axislighting.com](http://www.axislighting.com)