



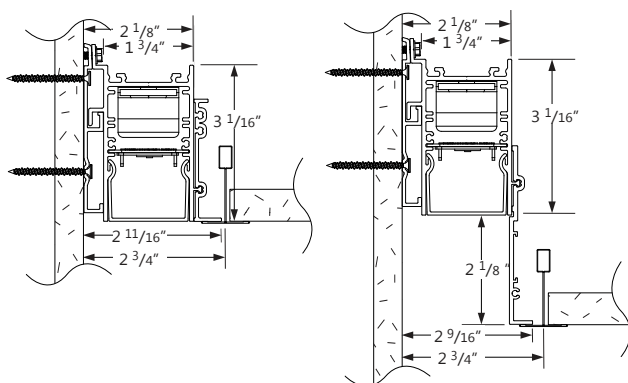
Project _____

Type _____

Notes _____

Flush

2" Regressed

cULus Listed
Type I.C.

Ordering Guide

| SCPLED | | | | | | | |
|------------|----------------------|---|----------------------|-----|--------|--------------------------|--------|
| PRODUCT ID | | NOM. LUMENS/FT | | CRI | | COLOR TEMP. (choose one) | |
| SCPLED | Sculpt Perimeter LED | 300 | 300 lm/ft - Minimum | 80 | 80 CRI | 27 | 2700 K |
| | | 1000 | 1000 lm/ft - Maximum | 90 | 90 CRI | 30 | 3000 K |
| | | | | | | 35 | 3500 K |
| | | | | | | 40 | 4000 K |
| | | Outputs between listed min and max are available. Consult factory for outputs outside of the listed range. | | | | | |
| | | | | | | | |
| | | | | | | | |
| | | | | | | | |
| | | | | | | | |
| | | | | | | | |
| | | | | | | | |
| | | | | | | | |
| | | | | | | | |
| | | | | | | | |
| | | | | | | | |
| | | | | | | | |
| | | | | | | | |
| | | | | | | | |
| | | | | | | | |
| | | | | | | | |
| | | | | | | | |
| | | | | | | | |
| | | | | | | | |
| | | | | | | | |
| | | | | | | | |
| | | | | | | | |
| | | | | | | | |
| | | | | | | | |
| | | | | | | | |
| | | | | | | | |
| | | | | | | | |
| | | | | | | | |
| | | | | | | | |
| | | | | | | | |
| | | | | | | | |
| | | | | | | | |
| | | | | | | | |
| | | | | | | | |
| | | | | | | | |
| | | | | | | | |
| | | | | | | | |
| | | | | | | | |
| | | | | | | | |
| | | | | | | | |
| | | | | | | | |
| | | | | | | | |
| | | | | | | | |
| | | | | | | | |
| | | | | | | | |
| | | | | | | | |
| | | | | | | | |
| | | | | | | | |
| | | | | | | | |
| | | | | | | | |
| | | | | | | | |
| | | | | | | | |
| | | | | | | | |
| | | | | | | | |
| | | | | | | | |
| | | | | | | | |
| | | | | | | | |
| | | | | | | | |
| | | | | | | | |
| | | | | | | | |
| | | | | | | | |
| | | | | | | | |
| | | | | | | | |
| | | | | | | | |
| | | | | | | | |
| | | | | | | | |
| | | | | | | | |
| | | | | | | | |
| | | | | | | | |
| | | | | | | | |
| | | | | | | | |
| | | | | | | | |
| | | | | | | | |
| | | | | | | | |
| | | | | | | | |
| | | | | | | | |
| | | | | | | | |
| | | | | | | | |
| | | | | | | | |
| | | | | | | | |
| | | | | | | | |
| | | | | | | | |
| | | | | | | | |
| | | | | | | | |
| | | | | | | | |
| | | | | | | | |
| | | | | | | | |
| | | | | | | | |
| | | | | | | | |
| | | | | | | | |
| | | | | | | | |
| | | | | | | | |
| | | | | | | | |
| | | | | | | | |
| | | | | | | | |
| | | | | | | | |
| | | | | | | | |
| | | | | | | | |
| | | | | | | | |
| | | | | | | | |
| | | | | | | | |
| | | | | | | | |
| | | | | | | | |
| | | | | | | | |
| | | | | | | | |
| | | | | | | | |
| | | | | | | | |
| | | | | | | | |
| | | | | | | | |
| | | | | | | | |
| | | | | | | | |
| | | | | | | | |
| | | | | | | | |
| | | | | | | | |
| | | | | | | | |
| | | | | | | | |
| | | | | | | | |
| | | | | | | | |
| | | | | | | | |
| | | | | | | | |
| | | | | | | | |
| | | | | | | | |
| | | | | | | | |
| | | | | | | | |
| | | | | | | | |
| | | | | | | | |
| | | | | | | | |
| | | | | | | | |
| | | | | | | | |
| | | | | | | | |
| | | | | | | | |
| | | | | | | | |
| | | | | | | | |
| | | | | | | | |
| | | | | | | | |
| | | | | | | | |
| | | | | | | | |
| | | | | | | | |
| | | | | | | | |
| | | | | | | | |
| | | | | | | | |
| | | | | | | | |
| | | | | | | | |
| | | | | | | | |
| | | | | | | | |
| | | | | | | | |
| | | | | | | | |
| | | | | | | | |
| | | | | | | | |
| | | | | | | | |
| | | | | | | | |
| | | | | | | | |
| | | | | | | | |
| | | | | | | | |
| | | | | | | | |
| | | | | | | | |
| | | | | | | | |
| | | | | | | | |
| | | | | | | | |
| | | | | | | | |
| | | | | | | | |
| | | | | | | | |
| | | | | | | | |
| | | | | | | | |

LED SYSTEM

| | |
|---------------------------|---|
| CRI | Minimum 80 or 90 color rendering index |
| CCT | Choice of 2700K, 3000K, 3500K and 4000K color temperature with a great color consistency (within 3.0-step MacAdam ellipse). |
| LED life | Minimum 50,000h with 85% of lumen maintenance in 25°C ambient temperature, in compliance with IES LM-80 testing measurements. |
| Thermal Management | Aluminum housing acting as the heat sink to maximize life. |

CONSTRUCTION

| | |
|--------------------------|---|
| Housing | Extruded aluminum (0.080" nominal) up to |
| End Cap | Die cast aluminum |
| Interior Brackets | Die formed sheet steel (20 gauge) |
| Lenses | Extruded acrylic (0.060" nominal) - injection moulded |
| Hanger | Die cast aluminum |
| Suspension | Sliding aircraft cable along product length |
| Cable Grips | Quick connecting / release |

ELECTRICAL

Lutron driver LDE1 - EcoSystem H-Series (1%)

Other drivers DALI - Digital Addressable Lighting Interface
DMX - Digital Multiplex
Xitanium SR - For wireless sensor

Emergency remote emergency battery pack or emergency circuit optional.

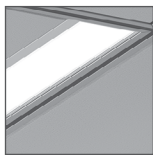
Input Voltage 120V, 277V, 347V, UNV.

i Incorporating these components may have limitations or affect the length of the luminaire. Please contact factory for more details.

WARRANTY

Limited 5-year warranty is available. Warranty is valid provided luminaires are installed and used according to specifications. For full terms and conditions, please consult warranty section at axislighting.com.

SHIELDING - Frosted acrylic Spotless lens



FL flush

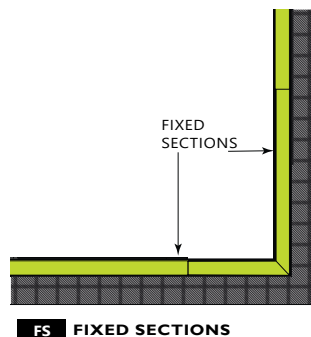


RG2 regressed 2"

FINISH

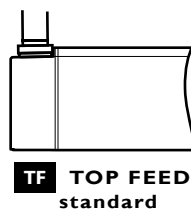
Powder coated and custom finishes are also available.

FIXED SECTION

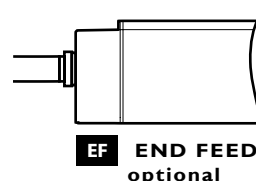


FS FIXED SECTIONS

POWER FEED



TF TOP FEED
standard



EF END FEED
optional

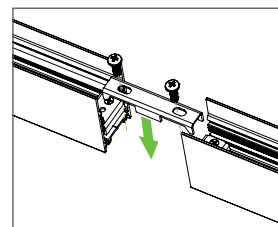
WEIGHT

| | |
|-----------------------|------------------|
| Recessed 4 ft | 8 lbs / 3.6 kg |
| Recessed 8 ft | 16 lbs / 7.3 kg |
| Recessed 12 ft | 24 lbs / 10.9 kg |

JOINERS


In order to allow very long runs of SCULPT luminaires, Axis has developed an effective joining system. Special care has been taken to maximize the performance of the joiner for each SCULPT option.

NOTE: Mount each system segment individually. Do not assemble system prior to mounting.

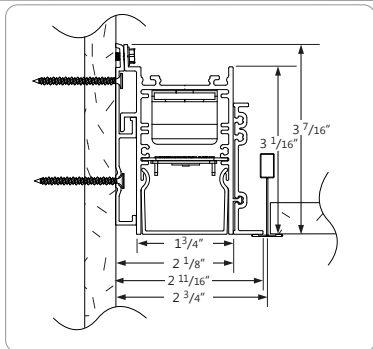


i Allow a minimum of 6" between end of long runs and vertical wall

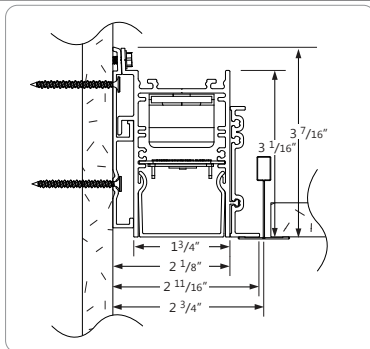
APPROVALS

Certified to UL and CUL standards 
Meets CCEC requirements (Chicago plenum)
Suitable for damp locations.
IC Rated (Insulated ceiling)

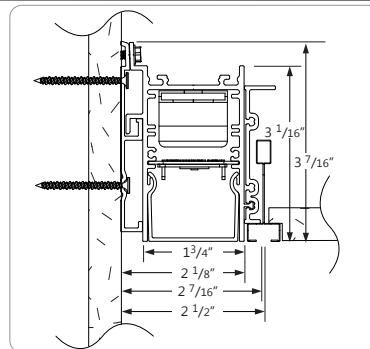
● TB CEILING MOUNTING OPTIONS



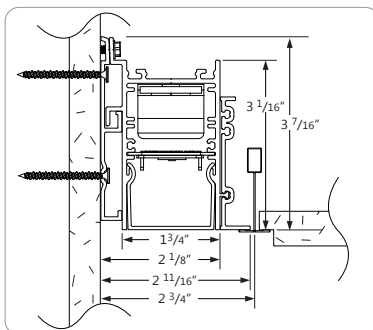
TB9 9/16" T-BAR



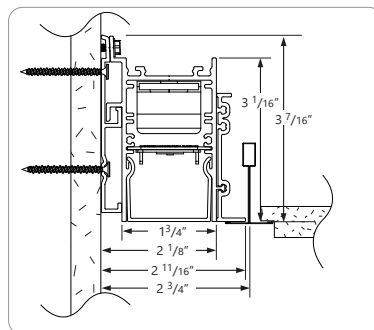
TB15 15/16" T-BAR



ST SCREW SLOT T-BAR



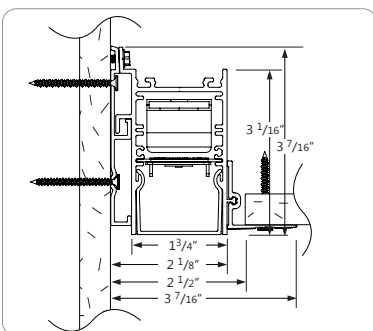
TG9 TEGULAR 9/16"



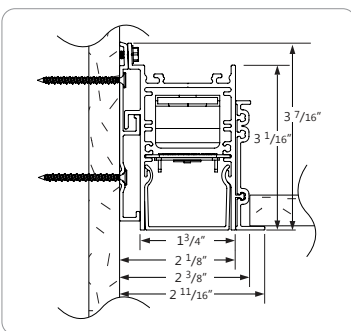
TG15 TEGULAR 15/16"

i Shown with flush shielding

● DRYWALL CEILING MOUNTING OPTIONS



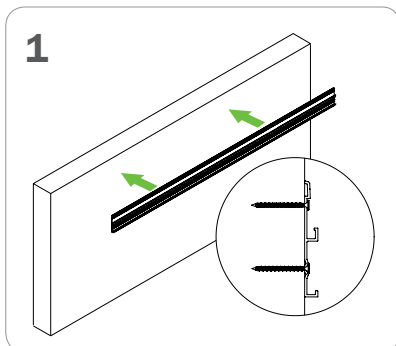
DS SPACKLE FLANGES



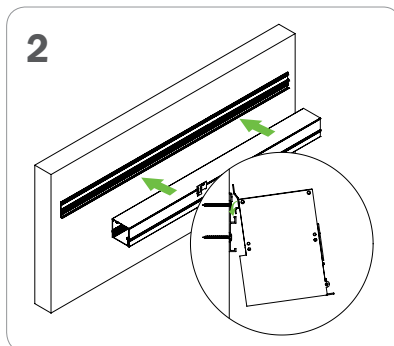
**DF VISIBLE FLANGES
WALL MOUNTING**

i Shown with flush shielding

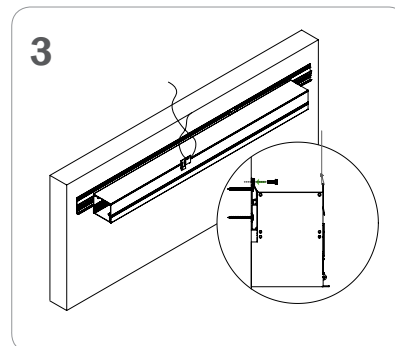
● INSTALLATION GUIDE



Install wall track level and secure to structure at small grooves in extrusion.



Hook Perimeter luminaire onto wall track.



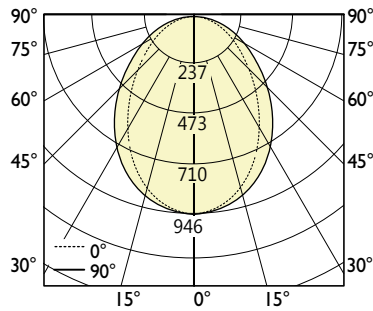
Secure to wall track, secure to structure.

● PHOTOMETRIC DATA (ADDITIONAL IES FILES AVAILABLE ON WEBSITE)

500 lm/ft linear with Flush lens



PHOTOMETRIC CURVE



Lumen/ft down: 501 lm/ft
Total Lumens: 2004 lm (for 4ft)
Input Watts: 22.2 W
Efficacy: 90 lm/W

80 CRI shown. For 90 CRI, divide wattage by 0.8 and multiply efficacy by 0.8.

IES FILE:SCR-500-80-35-F-4-W-UNV-D-1.IES

TESTED ACCORDING TO IES LM-79-2008

CANDELA DISTRIBUTION

| Vertical Angle | Horizontal Angles | | | | |
|----------------|-------------------|------|-----|------|-----|
| | 0 | 22.5 | 45 | 67.5 | 90 |
| 0 | 943 | 943 | 943 | 943 | 943 |
| 5 | 932 | 938 | 934 | 938 | 940 |
| 15 | 884 | 887 | 872 | 860 | 859 |
| 25 | 788 | 780 | 750 | 723 | 715 |
| 35 | 656 | 641 | 599 | 559 | 544 |
| 45 | 508 | 491 | 446 | 408 | 392 |
| 55 | 361 | 346 | 310 | 279 | 266 |
| 65 | 227 | 216 | 193 | 174 | 167 |
| 75 | 110 | 105 | 96 | 88 | 86 |
| 85 | 21 | 21 | 23 | 24 | 23 |
| 90 | 0 | 1 | 3 | 4 | 4 |

ZONAL LUMENS

| Zone | Lumens |
|-------|--------|
| 0 | |
| 0-10 | 89 |
| 10-20 | 245 |
| 20-30 | 345 |
| 30-40 | 375 |
| 40-50 | 346 |
| 50-60 | 280 |
| 60-70 | 194 |
| 70-80 | 103 |
| 80-90 | 27 |
| 90 | 1 |

LUMINANCE DATA (cd/m²)

| Vertical Angle | Horizontal Angles | | |
|----------------|-------------------|-------|-------|
| | 0 | 45 | 90 |
| 45 | 14871 | 13045 | 11453 |
| 55 | 13026 | 11161 | 9585 |
| 65 | 11088 | 9429 | 8163 |
| 75 | 8767 | 7698 | 6843 |
| 85 | 4868 | 5504 | 5504 |

i All IES files are available for download at: www.axislighting.com