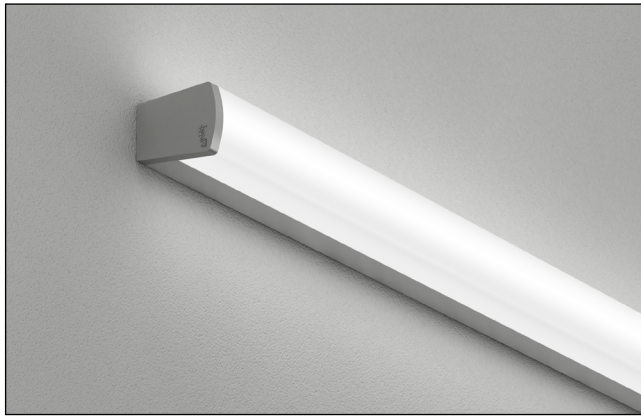
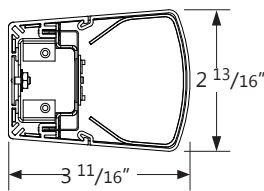
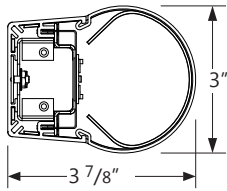


Prime LED | Wall mount



Round

Wedge



Project _____

Type _____

Notes _____

PERFORMANCE PER LINEAR FOOT AT 3500K AND 80 CRI

NOMINAL LUMEN OUTPUT	INPUT WATTS*	EFFICACY	PRODUCT
1000 lm/ft	8.48 W/ft	118 lm/W	PRWLED
1000 lm/ft	7.7 W/ft	130 lm/W	PWWLED

Please consult factory for custom lumen output and wattage.



Ordering Guide

PRODUCT ID		NOM. LUMENS/FT		CRI		COLOUR TEMP. (choose one)				SHIELDING	LENGTH/FT
PRWLED	Round Wall LED	500	500 lm/ft - Min	80	80 CRI	27	2700 K	TW2750	2700-5000 K - Tunable White	S satin lens	2 2'
PWWLED	Wedge Wall LED	1000	1000 lm/ft - Max	90	90 CRI*	30	3000 K	TW2765	2700-6500 K - Tunable White		4 4'
						35	3500 K	BTW3527	3500-2700 K - Tunable BIOS		6 6'
						40	4000 K	BTW4027	4000-2700 K - Tunable BIOS		8 8'
						B30	3000 K - BIOS*				12 12'
						B35	3500 K - BIOS*			S(L)	system run
						B40	4000 K - BIOS*				
		Outputs between listed min and max are available. Consult factory for outputs outside of the listed range. Consult factory for max output with BIOS.		* Not available with BIOS.		Consult Axitune technical sheet for more information of color technology. *Consult BIOS guide for more information on BIOS technology.					1' increment, minimum 2'

FINISH		VOLTAGE		DRIVER		CIRCUITS		BATTERY (OPTIONAL)	
AP	aluminum paint	120	120 V	DP	dimming (0-10V) 1%	1	1 circuit	B(#)	battery pack 4' sections
W	white	277	277 V	LT	Lutron	2	2 circuits		
BLK	black	347	347 V	BI	bi-level dimming	+E(#)	emergency circuit*		
C	custom	UNV	universal	O(#)	other **	+NL(#)	night light circuit*		
		DC	low voltage*	DPB(STC)	dimming (0-10V) 1% with BIOS*	+GTD(#)	generator transfer device*		
				DPB(DYN)	Bio-dimming™ 100%-81% with BIOS*				
				TW(#)	tunable white drivers*				
				POE(#)	POE drivers*				
		* Only available with POE drivers.		* See page 2 to specify system ** Please consult factory; see page 2		*Specify quantity		Specify quantity Not available with 347V Please consult factory	

IC CONTROLS (OPTIONAL)		CUSTOM (OPTIONAL)	
DS(#)	daylight sensor	C	custom
OS(#)	occupancy sensor		
DOS(#)	daylight & occupancy sensor		
EN(#)	Enlighted integral*		
ENR(#)	Enlighted remote*		
WC(#)	wireless control dimming		
* Please consult factory Specify quantity. Requires a blank See integrated controls guide for more details. Consult factory for Tunable White. Not available with DPB (DYN) driver for BIOS with Dynamic Spectrum.		Please specify	

● ELECTRICAL

Lutron driver	LDE1 - Hi-lume 1% EcoSystem with Soft-on, Fade-to-Black
Other drivers**	DALI - Digital Addressable Lighting Interface DMX - Digital Multiplex Xitanium SR - For wireless sensor
BIOS DPB drivers*	STC - BIOS control 0-10V with static spectrum and BIOS SkyBlue enabled from 100% to 1%. DYN - BIOS control 0-10V with dynamic spectrum and BIOS SkyBlue® with Bio-Dimming™, which changes spectral qualities by removing the SkyBlue component when dimming from 100% to 81%, while light output remains relatively constant; bio-dimming reduces CCT to 2700K. Dimming from 80% to 1% will then reduce light output.
Tunable White TW drivers*	DALIDT6 - DALI Type 6 (Two DALI Addresses) DALIDT8 - DALI Type 8 (One DALI Address)
Power over Ethernet POE drivers*	MOLEX IGOR SMARTENGINE O - Other (Consult factory)
Emergency	Integral emergency battery pack or emergency circuit optional.
Input Voltage	120V, 277V, 347V, UNV, DC.
Flex Whip	Shipped in a separate box for contractors to install

*Choose driver from available options.

i Incorporating these components may have limitations or affect the length of the luminaire. Please contact factory for more details.

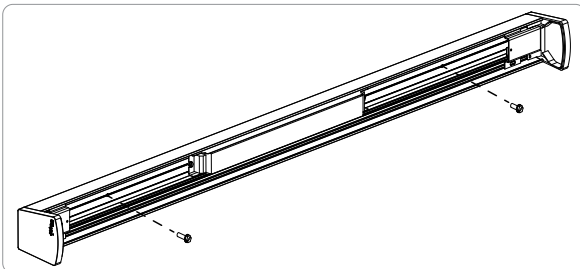
● LED SYSTEM

CRI	Minimum 80 or 90 color rendering index.
CRI BIOS	Minimum 80 color rendering index with R9>75 for all CCTs.
CCT Single Color	Choice of 2700K, 3000K, 3500K and 4000K color temperature with a great color consistency (within 3-step MacAdam ellipse). Both within fixture and fixture to fixture.
CCT BIOS	BIOS Static (STC) Choice of 3000K, 3500K and 4000K. BIOS SkyBlue® Dynamic (DYN) Choice of 3000K, 3500K, and 4000K with Bio-Dimming™ BIOS Tunable White (BTW) Choice of 4000-2700K and 3500-2700K; does not use a bio-dimmer, it uses TW drivers, which allow independent control of CCT and intensity; e.g., BTW4027 provides combined SkyBlue + white light at 4000K, SkyBlue is removed at 2700K. Light output can be adjusted for each CCT. Consult BIOS guide for more information on BIOS technology.
CCT Axitune Systems	Consult Axitune technical sheet for more information on color technology.
LED life	Minimum 50,000h with 85% of lumen maintenance in 25°C ambient temperature, in compliance with IES LM-80 testing measurements.
Thermal Management	Aluminum housing acting as the heat sink to maximize life.
Environment	Dry and damp rated for indoor use only in operating ambient temperatures of 0-40°C (32-104°F).

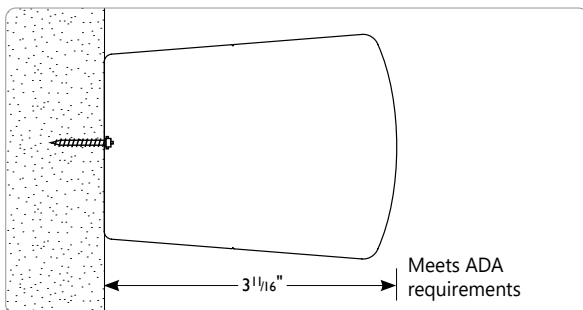
● LIGHT DISTRIBUTION



● MOUNTING OPTIONS



MOUNTING POINT



SIDE DETAIL

i Installation sheets for all mounting options are available at www.axislighting.com

● OTHER MOUNTING OPTIONS

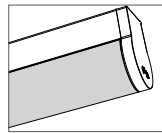
PRIME LED is also available in pendant and surface mounted options.

i Specification sheets for all mounting options are available for download at www.axislighting.com

● FINISH

Powder coated and custom finishes are also available.

● OPTICS



S satin lens

SATIN LENS

PMMA satin finish (0.060" nominal)

● SYSTEMS (S#)


Runs of PRIME LED that are greater than 12ft in length are designated as systems (S#). This means that the run is comprised of a combination of sections to be assembled on site using our joining system. The run is comprised of a combination of sections to be assembled on site using our joining system, maximum 4' lens with joining end cap. For more information on systems and joining, please refer to the PRIME LED installation sheets available for download at www.axislighting.com

● SPECIFICATIONS

CONSTRUCTION

Housing	Extruded aluminium (0.070" nominal) Up to 70% recycled content
End Cap	Die cast zinc (0.080" nominal)
Joiners	Die cast zinc (0.070" nominal)
Interior Brackets	Die formed sheet steel (20 gauge)
Reflectors	Die formed sheet steel (18 gauge)
Lens joiners	Die cast zinc (0.070" nominal)
Satin lens	PMMA satin finish (0.060" nominal) 68% trans.

● APPROVALS

Certified to UL and CUL standards 
Meets ADA requirements.
Suitable for damp locations.

● WEIGHT

Wall LED 4 ft	8 lbs / 3.9 Kg
Wall LED 8 ft	16 lbs / 7.7 Kg
Wall LED 12 ft	25 lbs / 11.6 Kg

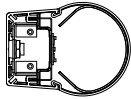
● WARRANTY

Limited 5-year warranty is available. Warranty is valid provided luminaires are installed and used according to specifications. For full terms and conditions, please consult warranty section at axislighting.com.

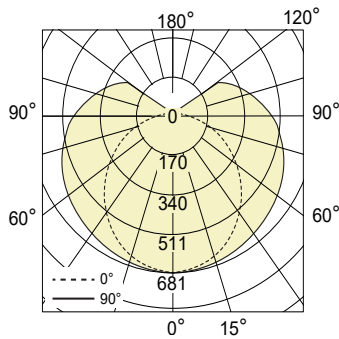
● PHOTOMETRIC DATA

PRWLED Round Wall

1000 lm/ft



PHOTOMETRIC CURVE



Lumen/ft down: 1000 lm/ft
Total Lumens: 3999 lm (for 4ft)
Input Watts: 33.9 W
Efficacy: 118 lm/W
 IES FILE: PRWLED-1000-80-35-S-4.IES
 TESTED ACCORDING TO IES LM-79-2008

CANDELA DISTRIBUTION

Vertical Angle	Horizontal Angles				
	0	22.5	45.0	67.5	90
0	680	680	680	680	680
5	677	677	678	679	678
15	654	656	664	672	675
25	606	615	639	666	676
35	539	556	609	657	674
45	452	486	569	639	665
55	354	408	521	612	646
65	250	328	468	577	619
75	145	252	414	537	581
85	50	190	362	490	537
90	7	165	338	465	511
95	5	146	314	438	484
105	5	119	267	383	425
115	6	92	205	298	338
125	6	76	174	249	282

ZONAL LUMENS

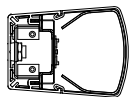
Zone	Lumens
0	
0-10	65
10-20	188
20-30	296
30-40	379
40-50	432
50-60	451
60-70	439
70-80	403
80-90	352
90	
90-100	298
100-110	244
110-120	179
120-130	130
130-140	
140-150	
150-160	
160-170	
170-180	144
180	

LUMINANCE DATA (cd/m²)

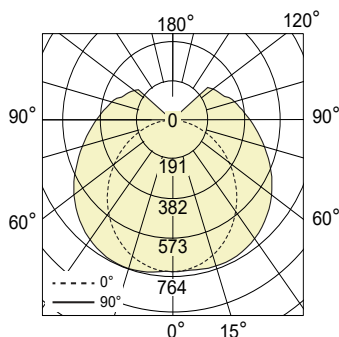
Vertical Angle	Horizontal Angles		
	0	45	90
45	7046	8869	10360
55	6799	10010	12407
65	6515	12193	16126
75	6175	17611	24748
85	6308	45769	67847

PWWLED Wedge Wall

1000 lm/ft



PHOTOMETRIC CURVE



Lumen/ft down: 1000 lm/ft
Total Lumens: 4000 lm (for 4ft)
Input Watts: 30.8 W
Efficacy: 130 lm/W
 IES FILE: PWWLED-1000-80-35-S-4.IES
 TESTED ACCORDING TO IES LM-79-2008

CANDELA DISTRIBUTION

Vertical Angle	Horizontal Angles				
	0	22.5	45.0	67.5	90
0	744	744	744	744	744
5	741	741	741	742	743
15	713	716	731	746	753
25	659	673	713	742	754
35	583	615	674	719	737
45	488	538	616	678	701
55	379	447	545	620	649
65	264	347	462	550	584
75	150	249	376	476	513
85	50	164	305	409	449
90	5	136	277	380	419
95	4	119	255	354	392
105	5	110	217	314	347
115	6	95	189	259	295
125	6	83	174	235	267

ZONAL LUMENS

Zone	Lumens
0	
0-10	71
10-20	208
20-30	329
30-40	419
40-50	469
50-60	474
60-70	438
70-80	374
80-90	303
90	
90-100	250
100-110	211
110-120	168
120-130	132
130-140	
140-150	
150-160	
160-170	
170-180	153
180	

LUMINANCE DATA (cd/m²)

Vertical Angle	Horizontal Angles		
	0	45	90
45	7795	6591	6696
55	7318	6227	6460
65	6736	5866	6263
75	5875	5551	6175
85	4452	5579	6369

i All IES files are available for download at: www.axislighting.com