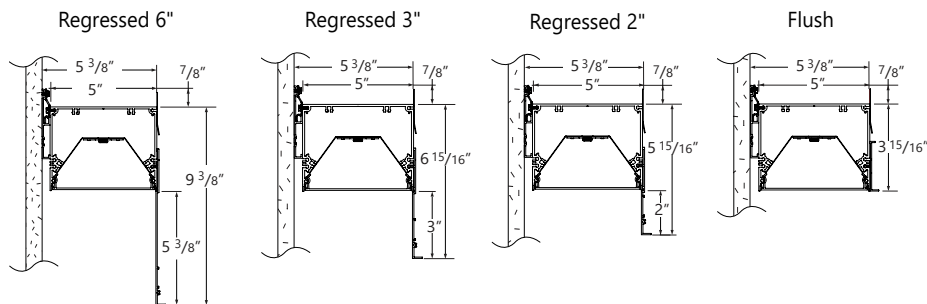


Project \_\_\_\_\_

Type \_\_\_\_\_

Notes \_\_\_\_\_



## PERFORMANCE PER LINEAR FOOT AT 4000K

NOMINAL LUMEN OUTPUT	INPUT WATTS*	EFFICACY	SHIELDING
1200 lm/ft	9.4 W/ft	128 lm/W	SO-FL

\* Based on a 4 foot luminaire using one driver  
Please consult factory for custom lumen output and wattage.



## Ordering Guide

B6PRLED											
PRODUCT ID		NOM. LUMENS/FT		CRI		COLOR TEMP. (choose one)			SHIELDING		
B6PRLED	Perimeter	400	400 lm/ft - Minimum	80	80 CRI	27	2700 K	TW2750	2700-5000 K - Tunable White	SO	spotless lens
	Recessed LED	1200	1200 lm/ft - Maximum	90	90 CRI*	30	3000 K	TW2765	2700-6500 K - Tunable White	UB	Ultra blend lens*
						35	3500 K	BTW3527	3500-2700 K - Tunable BIOS		
						40	4000 K	BTW4027	4000-2700 K - Tunable BIOS		
						B30	3000 K - BIOS*				
						B35	3500 K - BIOS*				
						B40	4000 K - BIOS*				
		Outputs between listed min and max are available. Consult factory for outputs outside of the listed range. Consult factory for max output with BIOS		* Not available with BIOS.		<a href="#">Consult Axitune technical sheet for more information of color technology.</a> <a href="#">*Consult BIOS guide for more information on BIOS technology</a> BIOS (B30, B35, B40, BTW3527, BTW4027) and Color tuning (TC1680) are not available with Telescopic.			* Default lens for Tunable white and BIOS. Consult factory for other lens.		

SHIELDING POSITION		TOTAL LENGTH	FINISH		VOLTAGE		DRIVER		CIRCUITS		MOUNTING		
FL	flush	#	total length	W	white	120	120 V	DP	dimming (0-10V) 1%	1	1 circuit	TB9	t-bar 9/16"
RG2	regressed 2"			C	custom	277	277 V	LT(#)	Lutron*	2	2 circuits	TB15	t-bar 15/16"
RG3	regressed 3"					347	347 V	BI	bi-level dimming	+E(#)	emergency circuit*	ST	screw slot t-bar
RG6	regressed 6"					UNV	universal	O(#)	other**	+NL(#)	night light circuit*	TG9	regular 9/16"
						DC	low voltage*	DPB(STC)	dimming (0-10V) 1% with BIOS*	+GTD(#)	generator transfer device*	TG15	regular 15/16"
						DPB(DYN)	Bio-dimming™ 100%-81% with BIOS*					DF	drywall flange
						TW(#)	tunable white drivers*					DS	drywall spackle flange
						POE(#)	POE drivers*						
		Min total length 2'				* Only available with POE drivers.		*See page 2 to specify system **Please consult factory; see page 2		*Specify quantity			

END CAP		TYPE (OPTIONAL)		BATTERY (OPTIONAL)		OTHER (OPTIONAL)		CUSTOM (OPTIONAL)	
<b>ECR2</b>	end cap for regressed 2**	<b>TS(#)</b>	telescopic sections	<b>B(#)</b>	battery pack 4' sections	<b>EF</b>	end feed	<b>C</b>	custom
<b>ECR3</b>	end cap for regressed 3***					<b>FW</b>	flex whip (6' std)		
<b>ECR6</b>	end cap for regressed 6****					<b>CP</b>	Chicago plenum		
<b>ECFL</b>	end cap flush with lens								
* Only available with RG2 regressed position ** Only available with RG3 regressed positions *** Only available with RG6 regressed position See page 4 for additional information.		TS section requires min length of 4'. Available on patterns. Recommended for longer runs or if exact perimeter length is not available. See page 2 for more details. Not available with BIOS - B30, B35, B40, BTW3527, BTW4027.		Please consult factory		Please specify			

## SPECIFICATIONS

### CONSTRUCTION

<b>Housing</b>	Extruded aluminum (0.075" nominal) Up to 70% recycled content
<b>End Cap</b>	Cast aluminum
<b>Interior Brackets</b>	Die formed sheet steel (18 gauge)
<b>Reflectors</b>	White powder coated sheet steel (22 gauge)
<b>Blank</b>	Extruded aluminum (0.075" nominal)
<b>Lens</b>	Spotless frosted acrylic lens
<b>T-Bar Bracket</b>	Die formed sheet steel (16 gauge)
<b>Screw Slot T-Bar Bracket</b>	Die formed sheet steel (16 gauge)
<b>Spackle Flange</b>	Extruded aluminum (0.070")
<b>All Flanges</b>	Extruded aluminum (0.075" nominal)

## ELECTRICAL

<b>Lutron driver</b>	LDE1 - Hi-lume 1% EcoSystem with Soft-on, Fade-to-Black
<b>Other drivers**</b>	DALI - Digital Addressable Lighting Interface DMX - Digital Multiplex Xitanium SR - For wireless sensor
<b>BIOS DPB drivers*</b>	STC - BIOS control 0-10V with static spectrum and BIOS SkyBlue enabled from 100% to 1%. DYN - BIOS control 0-10V with dynamic spectrum and BIOS SkyBlue® with Bio-Dimming™, which changes spectral qualities by removing the SkyBlue component when dimming from 100% to 81%, while light output remains relatively constant; bio-dimming reduces CCT to 2700K. Dimming from 80% to 1% will then reduce light output.
<b>Tunable White TW drivers*</b>	DALIDT6 - DALI Type 6 (Two DALI Addresses) DALIDT8 - DALI Type 8 (One DALI Address)
<b>Power over Ethernet POE drivers*</b>	MOLEX IGOR SMARTENGINE O - Other (Consult factory)
<b>Emergency</b>	Integral emergency battery pack or emergency circuit optional.
<b>Input Voltage</b>	120V, 277V, 347V, UNV, DC.
<b>Flex Whip</b>	Shipped in a separate box for contractors to install

\*Choose driver from available options.

**i** Incorporating these components may have limitations or affect the length of the luminaire. Please contact factory for more details.

## WEIGHT

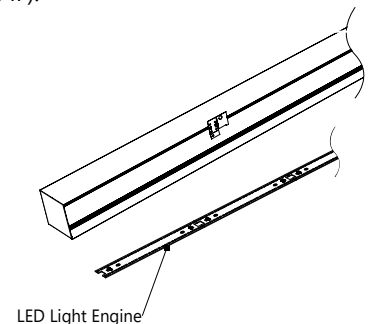
<b>Perimeter LED 4ft</b>	14.5 lbs / 6.6 kg
<b>Perimeter LED 8ft</b>	29.0 lbs / 13.2 kg
<b>Perimeter LED 12ft</b>	43.5 lbs / 19.7 kg

## WARRANTY

Limited 5-year warranty is available. Warranty is valid provided luminaires are installed and used according to specifications. For full terms and conditions, please consult warranty section at [axislighting.com](http://axislighting.com).

## LED SYSTEM

<b>CRI</b>	Minimum 80 or 90 color rendering index.
<b>CRI BIOS</b>	Minimum 80 color rendering index with R9>75 for all CCTs.
<b>CCT Single Color</b>	Choice of 2700K, 3000K, 3500K and 4000K color temperature with a great color consistency (within 3-step MacAdam ellipse). Both within fixture and fixture to fixture.
<b>CCT BIOS</b>	BIOS Static (STC) Choice of 3000K, 3500K and 4000K. BIOS SkyBlue® Dynamic (DYN) Choice of 3000K, 3500K, and 4000K with Bio-Dimming™ BIOS Tunable White (BTW) Choice of 4000-2700K and 3500-2700K; does not use a bio-dimmer, it uses TW drivers, which allow independent control of CCT and intensity; e.g., BTW4027 provides combined SkyBlue + white light at 4000K, SkyBlue is removed at 2700K. Light output can be adjusted for each CCT. <a href="#">Consult BIOS guide for more information on BIOS technology.</a>
<b>CCT Axitune Systems</b>	<a href="#">Consult Axitune technical sheet for more information on color technology.</a>
<b>LED life</b>	Minimum 50,000h with 85% of lumen maintenance in 25°C ambient temperature, in compliance with IES LM-80 testing measurements.
<b>Thermal Management</b>	Aluminum housing acting as the heat sink to maximize life.
<b>Environment</b>	Dry and damp rated for indoor use only in operating ambient temperatures of 0-40°C (32-104°F).



## APPROVALS

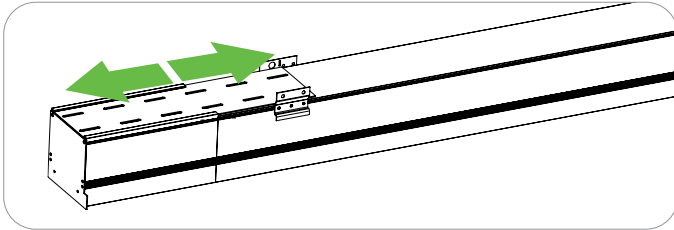
Certified to UL and CSA standards   
Meets CEC requirements (Chicago plenum)  
Meets NYC requirements  
Suitable for damp locations  
IC Rated (Insulated ceiling)

### ● 7" TELESCOPIC ADJUSTMENT

BEAM6 LED Perimeter system feature a patented telescopic sliding LED board design that allows runs to be field cut to facilitate installation and specification.

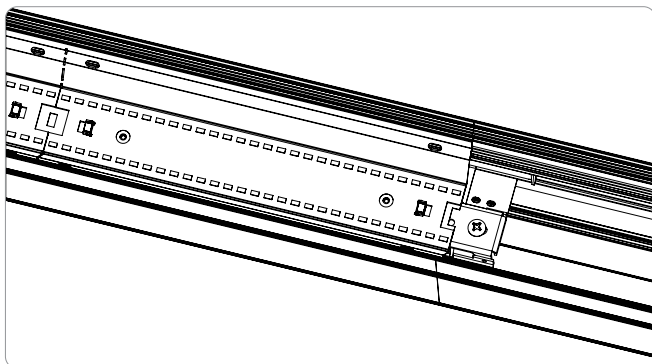
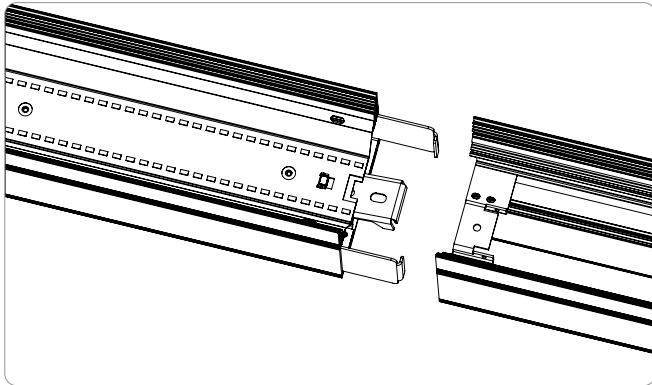
**NOTE:** Miter saw with aluminum cutting blade required on site for telescopic adjustments. If a 2nd telescopic section is required, minimum length is 8'.

**EXAMPLE:** Telescopic adjustment 7" (+4"/-3"). If a 10' 6" (126") fixture is specified, adjustable lengths with (1) TS section are between 123"-130".



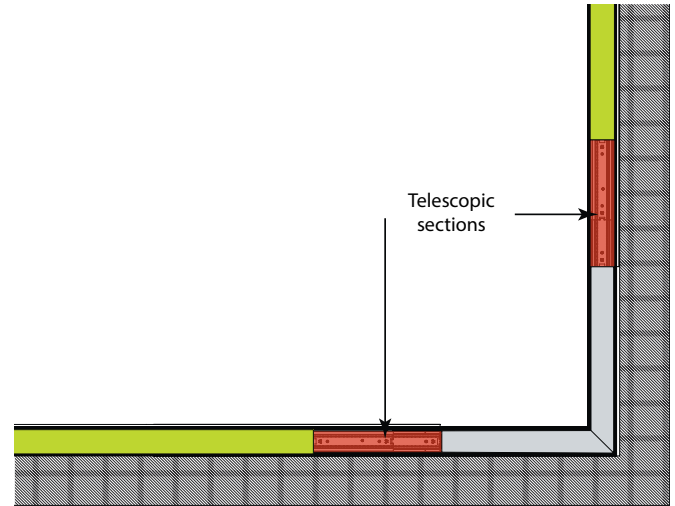
### ● JOINERS

BEAM6 Perimeter LED has steel joiners with wedge alignment for easy installation.

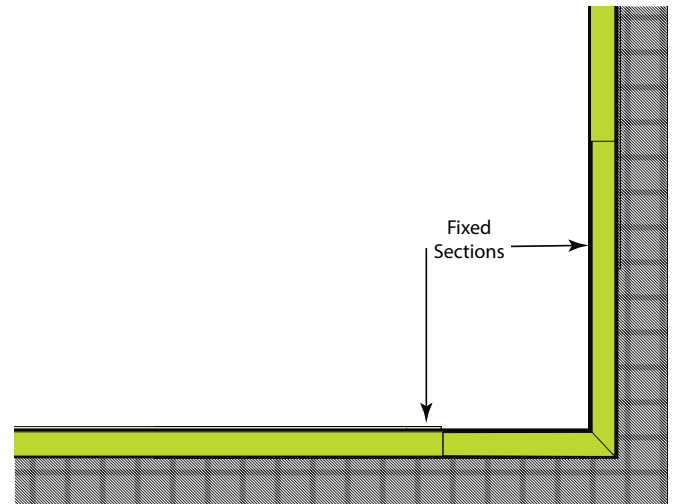


### JOINER SYSTEM

### ● SECTION QUANTITY



**TS TELESCOPIC SECTIONS**



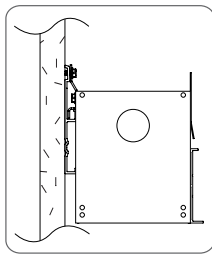
**FS FIXED SECTIONS**

### ● END CAP

#### FLUSH END CAP



**ECFL** END CAP  
FLUSH



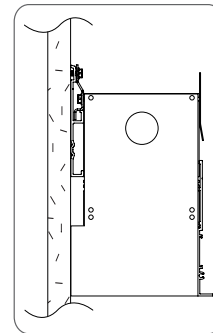
Side view

#### REGRESSED END CAP



**ECR2** END CAP 2"  
REGRESSED  
(shown)

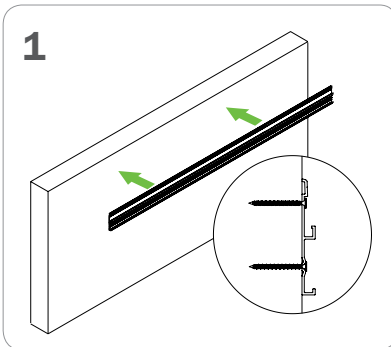
ECR3 - 3" End Cap is also available.  
ECR6 - 6" End Cap is also available.



Side view

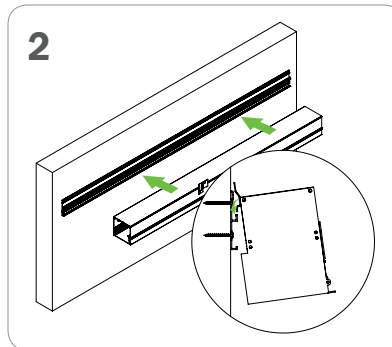
### ● INSTALLATION GUIDE

1



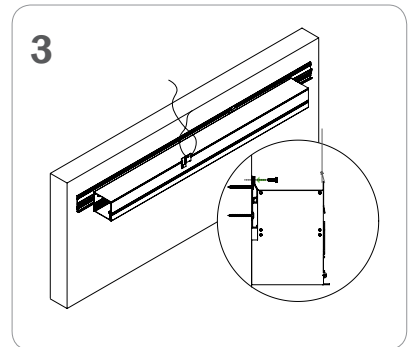
Install wall track level and secure to structure at small grooves in extrusion.

2



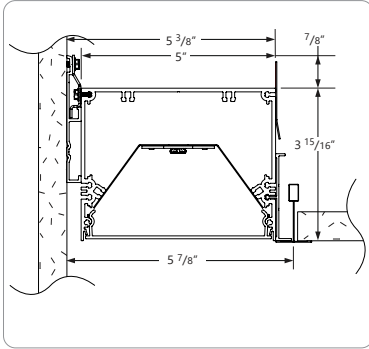
Hook beam Perimeter luminaire onto wall track.

3

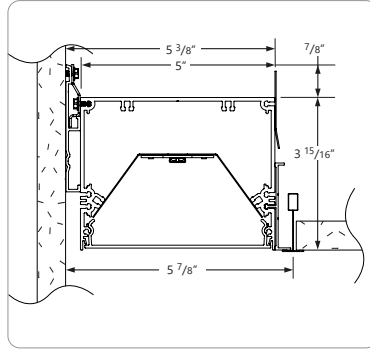


Secure to wall track, secure to structure.

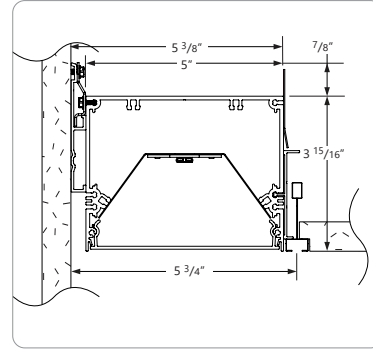
### ● TB CEILING MOUNTING OPTIONS



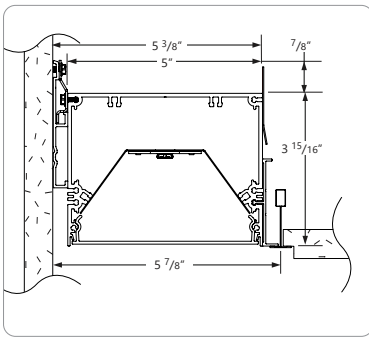
**TB15** 15/16" T-BAR



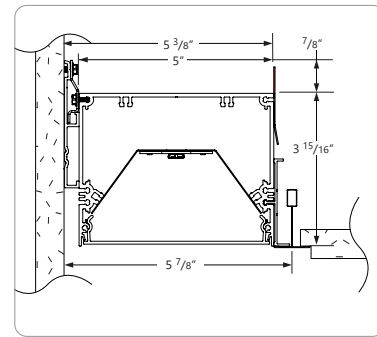
**TB9** 9/16" T-BAR



**ST** SCREW SLOT T-BAR

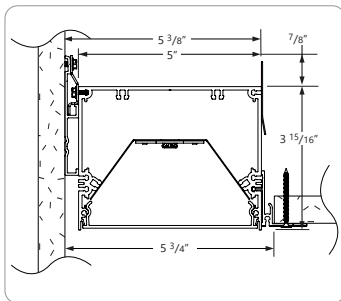


**TG9** 9/16" T-TEGULAR

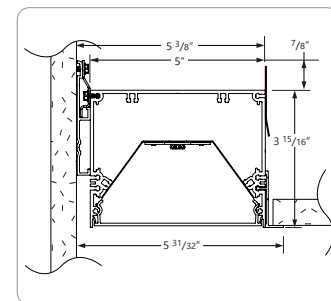


**TG15** 15/16" T-TEGULAR

### ● DRYWALL CEILING MOUNTING OPTIONS



**DS** SPACKLE FLANGES

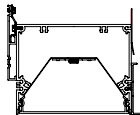


**DF** VISIBLE FLANGES  
WALL MOUNTING

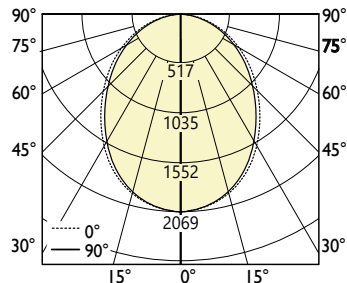
### ● PHOTOMETRIC DATA

SO Spotless lens - Flush

1200 lm/ft



#### PHOTOMETRIC CURVE



**Lumen/ft: 1200 lm/ft**  
**Total Lumens: 4801 lm (for 4ft)**  
**Input Watts: 37.4 W**  
**Efficacy: 128 lm/W**

IES FILE: B6PRLED-1200-80-35-FL-4.IES

TESTED ACCORDING TO IES LM-79-2008

#### CANDELA DISTRIBUTION

Vertical Angle	Horizontal Angles				
	0	22.5	45	67.5	90
0	2069	2069	2069	2069	2069
5	2054	2052	2049	2048	2048
15	1943	1933	1920	1909	1906
25	1738	1719	1692	1666	1656
35	1458	1436	1397	1358	1342
45	1142	1121	1078	1034	1017
55	825	807	768	728	713
65	527	515	487	460	449
75	272	266	255	242	237
85	76	74	71	68	67
90	4	4	4	3	3

#### ZONAL LUMENS

Zone	Lumens
0	
0-10	195
10-20	544
20-30	786
30-40	883
40-50	842
50-60	697
60-70	492
70-80	276
80-90	85
90	

#### LUMINANCE DATA (cd/m²)

Vertical Angle	Horizontal Angles		
	0	45	90
45	10504	9913	9356
55	9357	8704	8087
65	8117	7497	6905
75	6831	6399	5945
85	5645	5324	4990

**i** All IES files for other lamping are available for download at: [www.axislighting.com](http://www.axislighting.com)