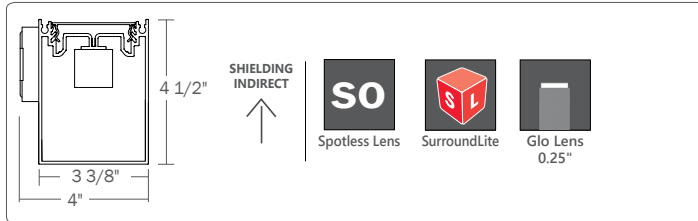


Spotless lens - up



Project _____

Type _____

Notes _____

PERFORMANCE PER LINEAR FOOT AT 3500K

| NOMINAL LUMEN OUTPUT | INPUT WATTS* | EFFICACY | SHIELDING I |
|----------------------|--------------|----------|-------------|
| 1200 lm/ft | 8.5 W/ft | 141 lm/W | 0.25G |
| 1200 lm/ft | 8.6 W/ft | 139 lm/W | SO |
| 1200 lm/ft | 9.2 W/ft | 130 lm/W | SLA |

Please consult factory for custom lumen output and wattage.

Declare.

**Ordering Guide**

| PRODUCT ID | NOM. LUM/FT UP | CRI | COLOR TEMP. (choose one) | SHIELDING INDIRECT |
|----------------------------------|--|---------------------------------------|--|--|
| TB3WILED | | | | |
| Beam3 - Wall Indirect LED | 300 300 lm/ft - Min. 1200 1200 lm/ft - Max. | 80 80 CRI 90 90 CRI* | 27 2700 K 30 3000 K 35 3500 K 40 4000 K B30 3000 K - BIOS* B35 3500 K - BIOS* B40 4000 K - BIOS* | SO spotless lens SLA surroundlite asy. 0.25G 0.25" Glo lens |
| | Outputs between listed min and max are available. Consult factory for outputs outside of the listed range. Consult factory for max output with BIOS. | * Not available with BIOS. | Consult Axitune technical sheet for more information of color technology. *Consult BIOS guide for more information on BIOS technology | Choose only one of the options above |

| LENGTH (FT) | FINISH | VOLTAGE | DRIVER | CIRCUITS |
|--|---|--|---|--|
| 2 2' 3 3' 4 4' 5 5' 8 8' 12 12' S(L) System Run * | AP aluminum paint W white BLK black C custom | 120 120 V 277 277 V 347 347 V UNV universal DC low voltage* | DP dimming (0-10V) 1% LT(#) Lutron * BI bi-level dimming O(#) other ** DPB(STC) dimming (0-10V) 1% with BIOS* DPB(DYN) Bio-dimming™ 100%-81% with BIOS* TW(#) tunable white drivers* POE(#) POE drivers* | 1 1 circuit 2 2 circuits +E(#) emergency circuit * +NL(#) night light circuit * +GTD(#) generator transfer device * +M MR |
| * SurroundLite available in 1" increments | | * Only available with POE drivers. | * See page 2 to specify system ** Please consult factory; see page 2 | * Specify quantity |

| BATTERY (OPTIONAL) | IC CONTROLS (OPTIONAL) | CUSTOM (OPTIONAL) |
|---|---|-------------------|
| B(#) battery pack (integral) | DS(#) daylight sensor OS(#) occupancy sensor DOS(#) daylight & occupancy sensor EN(#) Enlighted integral * ENR(#) Enlighted remote * WC(#) wireless control dimming | C custom |
| Requires 120V or 277V; Minimum 5ft; Not available with 347V Please consult factory | * Please consult factory Specify quantity. Requires 8" blank. See pages 4-5 for more details. See integrated controls guide for more details. Consult factory for Tunable White. Not available with DPB (DYN) driver for BIOS with Dynamic Spectrum. | Please specify |

CONSTRUCTION

| | |
|--------------------------|--|
| Housing | Extruded aluminum (0.075" nominal) Up to 70% recycled content |
| End Cap | Cast aluminum |
| Interior Brackets | Die formed sheet steel (20 gauge) |
| Reflectors | White powder coated sheet steel (22 gauge) |
| Lenses | Extruded acrylic (0.070" nominal) |
| Hanger | Die cast aluminum |
| Suspension | Sliding aircraft cable along product length |

ELECTRICAL

| | |
|---|--|
| Lutron driver | LDE1 - Hi-lume 1% EcoSystem with Soft-on, Fade-to-Black |
| Other drivers** | DALI - Digital Addressable Lighting Interface DMX - Digital Multiplex Xitanium SR - For wireless sensor |
| BIOS DPB drivers* | STC - BIOS control 0-10V with static spectrum and BIOS SkyBlue enabled from 100% to 1%. DYN - BIOS control 0-10V with dynamic spectrum and BIOS SkyBlue® with Bio-Dimming™, which changes spectral qualities by removing the SkyBlue component when dimming from 100% to 81%, while light output remains relatively constant; bio-dimming reduces CCT to 2700K. Dimming from 80% to 1% will then reduce light output. |
| Tunable White TW drivers* | DALIDT6 - DALI Type 6 (Two DALI Addresses) DALIDT8 - DALI Type 8 (One DALI Address) |
| Power over Ethernet POE drivers* | MOLEX IGOR SMARTENGINE O - Other (Consult factory) |
| Emergency | Integral emergency battery pack or emergency circuit optional. |
| Input Voltage | 120V, 277V, 347V, UNV, DC. |
| Flex Whip | Shipped in a separate box for contractors to install |

*Choose driver from available options.

i Incorporating these components may have limitations or affect the length of the luminaire. Please contact factory for more details.

WARRANTY

Limited 5-year warranty is available. Warranty is valid provided luminaires are installed and used according to specifications. For full terms and conditions, please consult warranty section at axislighting.com.

WEIGHT

| | |
|--------------------------------|--------------------|
| Wall Indirect LED 4 ft | 12.3 lbs / 5.0 kg |
| Wall Indirect LED 8 ft | 24.6 lbs / 10.1 kg |
| Wall Indirect LED 12 ft | 36.9 lbs / 15.1 kg |

SYSTEM (S#)

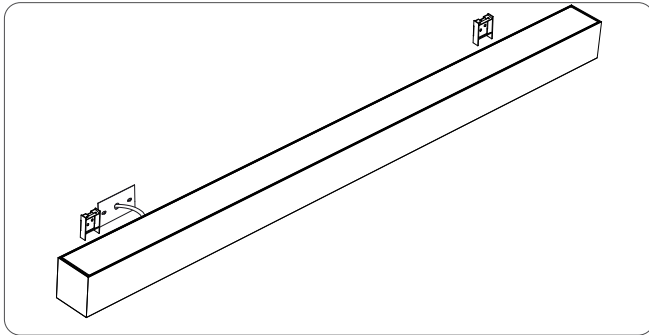
BEAM 3 linear systems, with the use of a strong profile, allow for a nearly hair thin connection system of continuous runs. Lengths of 4', 8', 12' as well as custom lengths are available. Runs of BEAM 3 that are greater than 12' in length are designated as systems (S#). This means that the run is comprised of a combination of 4', 8' and/or 12' sections to be assembled on site using our joining system. System runs with SurroundLite available in 1' increments only. For more information on systems and joining, please refer to the BEAM installation sheets available for download at www.axislighting.com.

LED SYSTEM

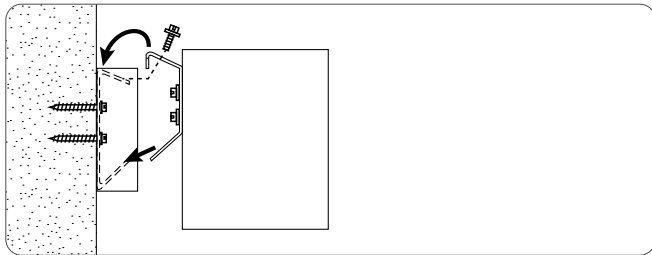
| | |
|----------------------------|---|
| CRI | Minimum 80 or 90 color rendering index. |
| CRI BIOS | Minimum 80 color rendering index with R9>75 for all CCTs. |
| CCT Single Color | Choice of 2700K, 3000K, 3500K and 4000K color temperature with a great color consistency (within 3-step MacAdam ellipse). Both within fixture and fixture to fixture. |
| CCT BIOS | BIOS Static (STC) Choice of 3000K, 3500K and 4000K. BIOS SkyBlue® Dynamic (DYN) Choice of 3000K, 3500K, and 4000K with Bio-Dimming™ BIOS Tunable White (BTW) Choice of 4000-2700K and 3500-2700K; does not use a bio-dimmer, it uses TW drivers, which allow independent control of CCT and intensity; e.g., BTW4027 provides combined SkyBlue + white light at 4000K, SkyBlue is removed at 2700K. Light output can be adjusted for each CCT. Consult BIOS guide for more information on BIOS technology. |
| CCT Axitune Systems | Consult Axitune technical sheet for more information on color technology. |
| LED life | Minimum 50,000h with 85% of lumen maintenance in 25°C ambient temperature, in compliance with IES LM-80 testing measurements. |
| Thermal Management | Aluminum housing acting as the heat sink to maximize life. |
| Environment | Dry and damp rated for indoor use only in operating ambient temperatures of 0-40°C (32-104°F). |

● MOUNTING OPTIONS

HORIZONTAL MOUNTING DETAILS

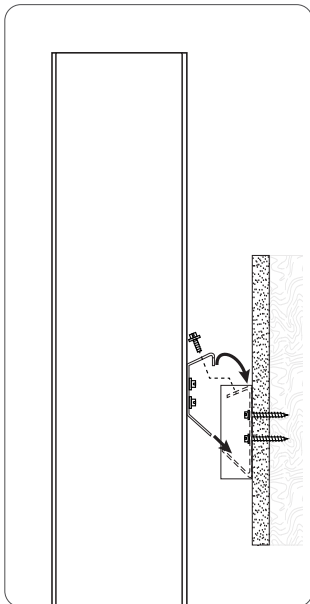


MOUNTING BRACKETS

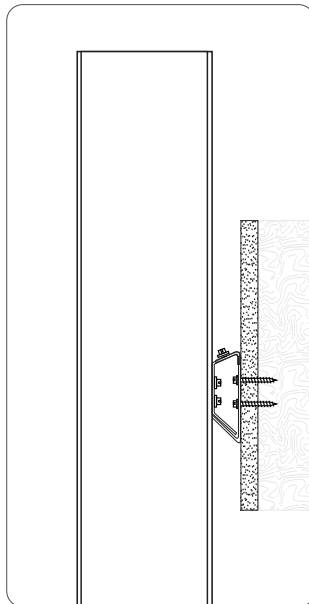


SIDE VIEW

VERTICAL MOUNTING DETAILS



MOUNTING BRACKETS



SIDE VIEW

● OTHER MOUNTING OPTIONS

BEAM 3 is also available with wall and horizontal wall mounted options.

i Specification sheets and installation sheets for all mountings for BEAM 3 luminaires are available for download at www.axislighting.com

● FINISH

Aluminium paint, powder coated and custom finishes are also available.

● APPROVALS

Certified to UL and CUL standards
Meets NYC requirements
Meets ADA requirements.
Suitable for damp locations.



Declare.

Beam 3 Axis Lighting

Final Assembly: Montreal, Quebec, Canada
Life Expectancy: 7 Year(s)
End of Life Options: Recyclable (87.5%), Landfill (12.5%)

Ingredients:

Recessed Housing: Aluminum 6063; Aluminum hydroxide; Titanium dioxide; Barium sulfate; 1,3,5-Triglycidyl-s-triazinetriene; **Extruded White Beam:** Aluminum 6063; Petroleum distillates; Titanium dioxide; Xylene; 1,2,4-Trimethylbenzene; 2-Butoxyethanol; 2-Pentanone, 4-hydroxy-4-methyl-; Aromatic 100 (Aromatic naphtha, type 1); Ethanol; Ethylbenzene; n-Butanol; Phenol, 4,4'-(1-methylethylidene)bis-, polymer with 2,2'-(1-methylethylidene) bis(4,1-phenyleneoxymethylene)]bis[oxirane]; Aluminum hydroxide; Toluene; **Lens:** Polymethyl methacrylate; **Reflector:** Aluminum 5052; Polyester Resin; Titanium dioxide; Calcium Carbonate; 1,3,5-Triglycidyl-s-triazinetriene; **End Plate:** Aluminum; Silicon; Copper; **Phenol, polymer with formaldehyde;** **Bracket:** Steel manufacture, chemicals; (R)-1-chloro-2,3-epoxypropane; Lycopodium (powder); Pitch, gilsonite; **Cover:** Steel; **Small Hardware:** 18-8 Stainless Steel; **Wire 1:** Copper; Bicyclo[2.2.1]hept-2-ene, 5-ethylidene-, polymer with ethene and 1-propene; Ammonium polyphosphate; **Wire 2:** Copper; Bicyclo[2.2.1]hept-2-ene, 5-ethylidene-, polymer with ethene and 1-propene; Ammonium polyphosphate; **Wire 3:** Copper; Bicyclo[2.2.1]hept-2-ene, 5-ethylidene-, polymer with ethene and 1-propene; Ammonium polyphosphate; **Wire 4:** Copper; Bicyclo[2.2.1]hept-2-ene, 5-ethylidene-, polymer with ethene and 1-propene; Ammonium polyphosphate; **Wire 5:** Copper; Bicyclo[2.2.1]hept-2-ene, 5-ethylidene-, polymer with ethene and 1-propene; Ammonium polyphosphate; **3-Way Connector:** Poly[imino(1,6-dioxo-1,6-hexanediyl)imino-1,6-hexanediyl]; Iron; Copper; **Flange Cap:** Polyvinyl chloride

Living Building Challenge Criteria:

I-13 Red List:
☐ LBC Red List Free % Disclosed: 100% at 100ppm
☐ LBC Red List Approved VOC Content: Not Applicable
☒ Declared

I-10 Interior Performance: Not Compliant
I-14 Responsible Sourcing: Not Applicable

AXS-0001
EXP. 01 OCT 2024
Original Issue Date: 2023

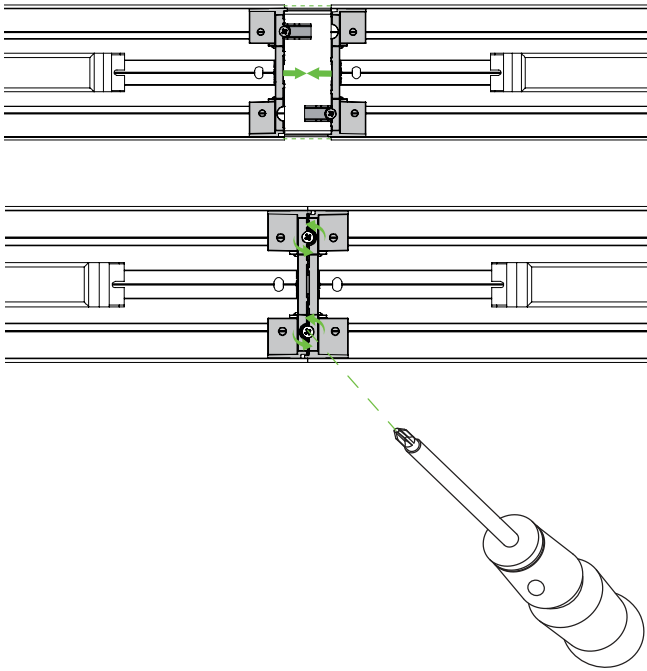
MANUFACTURER RESPONSIBLE FOR LABEL ACCURACY
INTERNATIONAL LIVING FUTURE INSTITUTE™ living-future.org/declare

● JOINERS

BEAM 3 luminaires feature the joining mechanism shown below. This mechanism joins and aligns multiple luminaires to create long continuous runs of light.

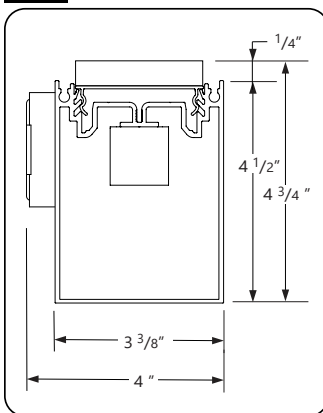
NOTE: Mount each system segment individually.

Do not assemble system prior to mounting.

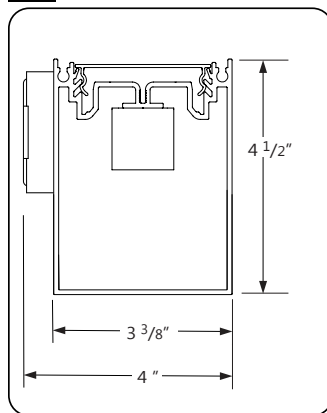


● SECTION VIEWS

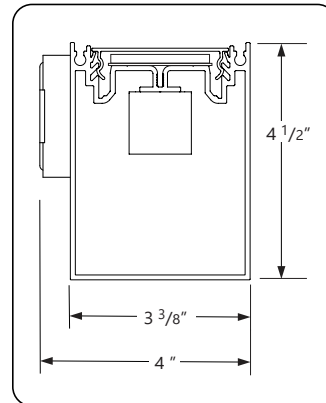
0.25G 0.25" Glo lens - Indirect



SO Spotless lens - Indirect



SLA SurroundLite Asy. - Indirect



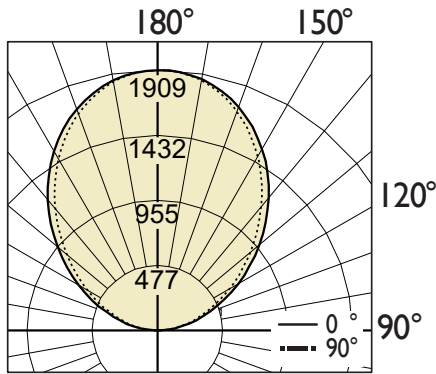
● PHOTOMETRIC DATA

SO Spotless lens

1200 lm/ft



PHOTOMETRIC CURVE



Lumen/ft up: 1200 lm/ft
 Total Lumens: 4800 lm (for 4ft)
 Input Watts: 34.5 W
 Efficacy: 139 lm/W
 IES FILE: TB3WILED-1200-80-35-SO-4.IES

TESTED ACCORDING TO IES LM-79-2008

CANDELA DISTRIBUTION

| Vertical Angle | Horizontal Angles | | | | |
|----------------|-------------------|------|------|------|------|
| | 0 | 22.5 | 45 | 67.5 | 90 |
| 90 | 8 | 6 | 6 | 5 | 4 |
| 95 | 79 | 78 | 73 | 64 | 60 |
| 105 | 279 | 275 | 273 | 270 | 270 |
| 115 | 532 | 525 | 520 | 514 | 514 |
| 125 | 816 | 810 | 804 | 796 | 795 |
| 135 | 1115 | 1107 | 1099 | 1095 | 1094 |
| 145 | 1401 | 1390 | 1386 | 1382 | 1380 |
| 155 | 1643 | 1636 | 1632 | 1629 | 1628 |
| 165 | 1815 | 1812 | 1809 | 1807 | 1808 |
| 175 | 1899 | 1897 | 1896 | 1897 | 1897 |
| 180 | 1909 | 1909 | 1909 | 1909 | 1909 |

ZONAL LUMENS

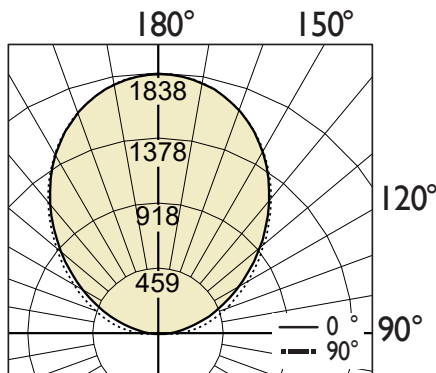
| Zone | Lumens |
|---------|--------|
| 90 | |
| 90-100 | 85 |
| 100-110 | 296 |
| 110-120 | 523 |
| 120-130 | 726 |
| 130-140 | 855 |
| 140-150 | 871 |
| 150-160 | 753 |
| 160-170 | 510 |
| 170-180 | 180 |
| 180 | |

0.25G 0.25" Glo Lens

1200 lm/ft



PHOTOMETRIC CURVE



Lumen/ft up: 1200 lm/ft
 Total Lumens: 4800 lm (for 4ft)
 Input Watts: 34 W
 Efficacy: 141 lm/W
 IES FILE: TB3WILED-1200-80-35-0.25G-4.IES

TESTED ACCORDING TO IES LM-79-2008

CANDELA DISTRIBUTION

| Vertical Angle | Horizontal Angles | | | | |
|----------------|-------------------|------|------|------|------|
| | 0 | 22.5 | 45 | 67.5 | 90 |
| 90 | 8 | 33 | 68 | 98 | 108 |
| 95 | 76 | 104 | 141 | 171 | 181 |
| 105 | 255 | 281 | 322 | 354 | 364 |
| 115 | 491 | 514 | 544 | 572 | 582 |
| 125 | 768 | 783 | 805 | 821 | 826 |
| 135 | 1062 | 1069 | 1083 | 1090 | 1092 |
| 145 | 1346 | 1346 | 1352 | 1356 | 1357 |
| 155 | 1583 | 1583 | 1584 | 1585 | 1586 |
| 165 | 1749 | 1749 | 1750 | 1749 | 1749 |
| 175 | 1829 | 1829 | 1830 | 1830 | 1830 |
| 180 | 1837 | 1837 | 1837 | 1837 | 1837 |

ZONAL LUMENS

| Zone | Lumens |
|---------|--------|
| 90 | |
| 90-100 | 150 |
| 100-110 | 336 |
| 110-120 | 536 |
| 120-130 | 715 |
| 130-140 | 830 |
| 140-150 | 842 |
| 150-160 | 726 |
| 160-170 | 491 |
| 170-180 | 173 |
| 180 | |

i All IES files are available for download at: www.axislighting.com

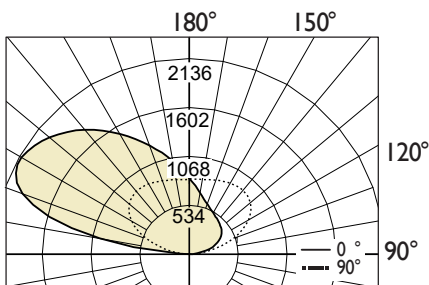
● PHOTOMETRIC DATA

SLA SurrounLite Asymmetric

1200 lm/ft



PHOTOMETRIC CURVE



Lumen/ft up: 1200 lm/ft
Total Lumens: 4800 lm (for 4ft)
Input Watts: 36.9 W
Efficacy: 130 lm/W
IES FILE: TB3WILED-1200-80-35-SLA-4.IES
TESTED ACCORDING TO IES LM-79-2008

CANDELA DISTRIBUTION

| Vertical Angle | Horizontal Angles | | | | |
|----------------|-------------------|------|-----|------|-----|
| | 0 | 22.5 | 45 | 67.5 | 90 |
| 90 | 6 | 5 | 7 | 8 | 8 |
| 95 | 81 | 82 | 56 | 39 | 36 |
| 105 | 370 | 296 | 262 | 238 | 230 |
| 115 | 648 | 495 | 414 | 373 | 361 |
| 125 | 828 | 635 | 512 | 451 | 434 |
| 135 | 908 | 707 | 569 | 495 | 473 |
| 145 | 916 | 730 | 602 | 529 | 506 |
| 155 | 886 | 739 | 632 | 572 | 551 |
| 165 | 851 | 755 | 683 | 642 | 629 |
| 175 | 828 | 794 | 770 | 758 | 756 |
| 180 | 835 | 835 | 835 | 835 | 835 |

ZONAL LUMENS

| Zone | Lumens |
|---------|--------|
| 90 | |
| 90-100 | 165 |
| 100-110 | 657 |
| 110-120 | 892 |
| 120-130 | 907 |
| 130-140 | 797 |
| 140-150 | 622 |
| 150-160 | 430 |
| 160-170 | 248 |
| 170-180 | 81 |
| 180 | |

i All IES files are available for download at: www.axislighting.com