

PERSPECTIVES 3

Architectural Lighting Innovations

Cove Perfekt™: The New Standard in Cove Lighting



axis



About Axis Lighting

Founded in 1991 and still family owned and managed, Axis is an important source for architectural lighting across North America and around the globe.

Over the last decade, the company has exhibited remarkable growth thanks to its commitment to **Design Flexibility, Optimal Energy Efficiency and Responsive Customer Care**. That leadership effort now extends to developing **Innovative Lighting Technologies**, such as SurroundLite, on an ongoing basis.

On the strength of a broad and expanding product line, Axis has successfully completed lighting projects for high-profile clients including Apple, Chrysler, The Empire State Building, Google, Hyundai, Time Warner and McGill University, among many others.

Axis has the drive and the expertise to meet your needs and provide architectural lighting... your way.



“Less is more.”

– Mies van der Rohe

Simple, minimalist design is the driving force behind **Perspectives 3**, which focuses on one of the most desirable yet complex illumination techniques around: cove lighting.

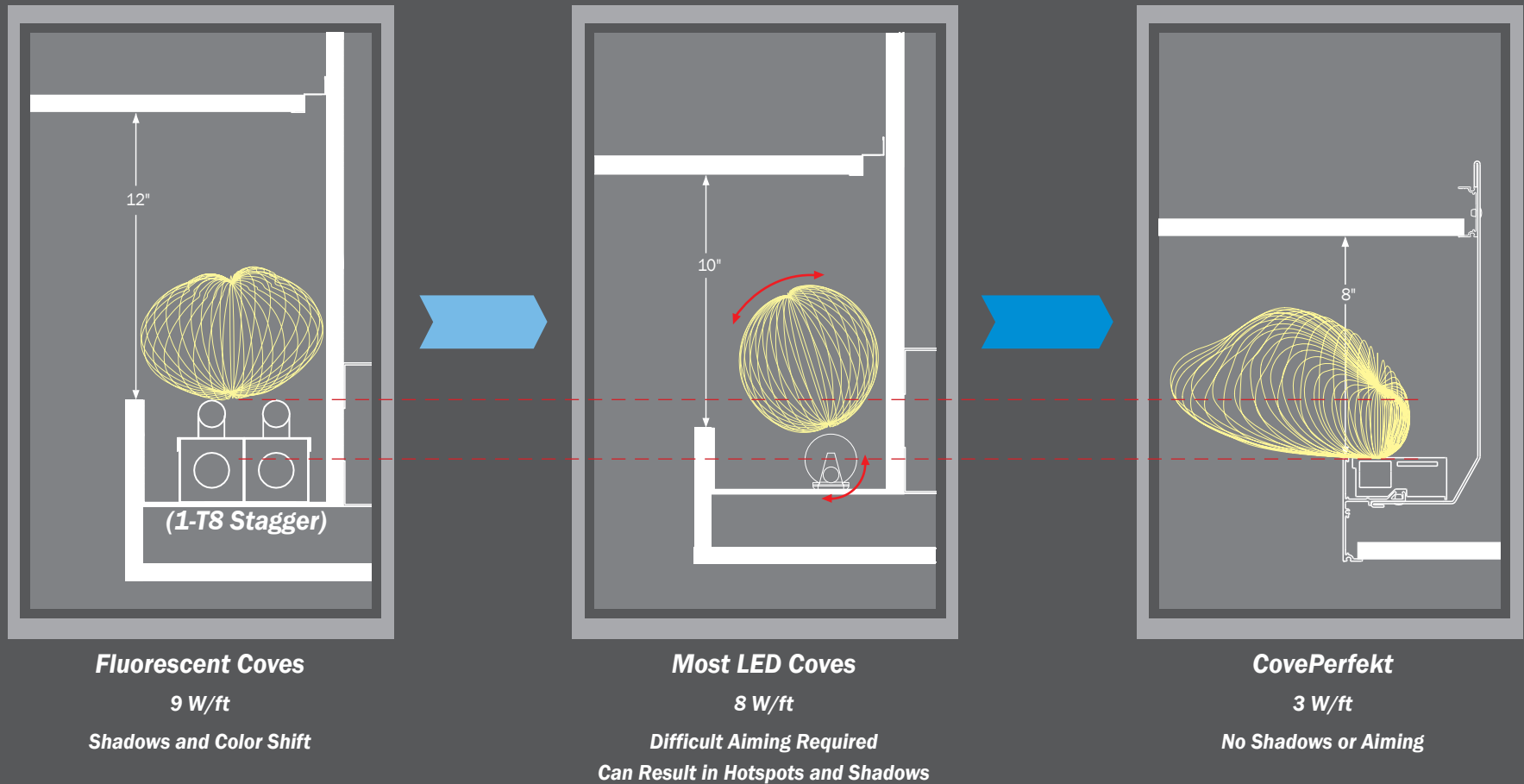
Cove lights are visually appealing for several reasons. Coves add volume to a space while concealing the light source. Also, cove lights increase perceived brightness, enhancing the environment with a layer of beautiful indirect lighting.

That explains why architects are so fond of cove lighting, in spite of its many challenges regarding selection, installation and aiming.

Keen on solving those shortcomings, Axis has developed **CovePerfekt**, the first product in a new family of **Perfekt** specialty luminaires.

An Evolution in Cove Lighting	2
CovePerfekt Ceiling	6
CovePerfekt Wall	8
CovePerfekt Features	10
Axis & Armstrong Partnership	14
Luminaire Guide	25

An Evolution in Cove Lighting



Less Cove. More Light.

Axis presents CovePerfekt: a new way to design cove lighting with less guesswork and more freedom.

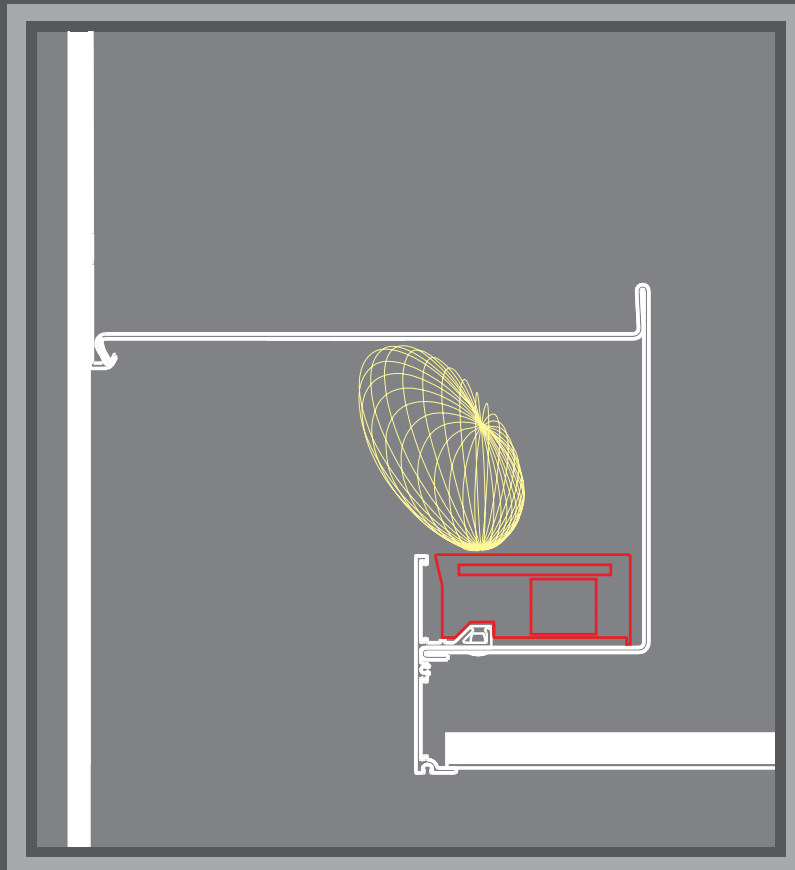
With CovePerfekt:

- Design smaller coves
- Eliminate hot spots and aiming
- Improve the overall cove light quality
- Save energy like never before

CovePerfekt - Powered by SurroundLite

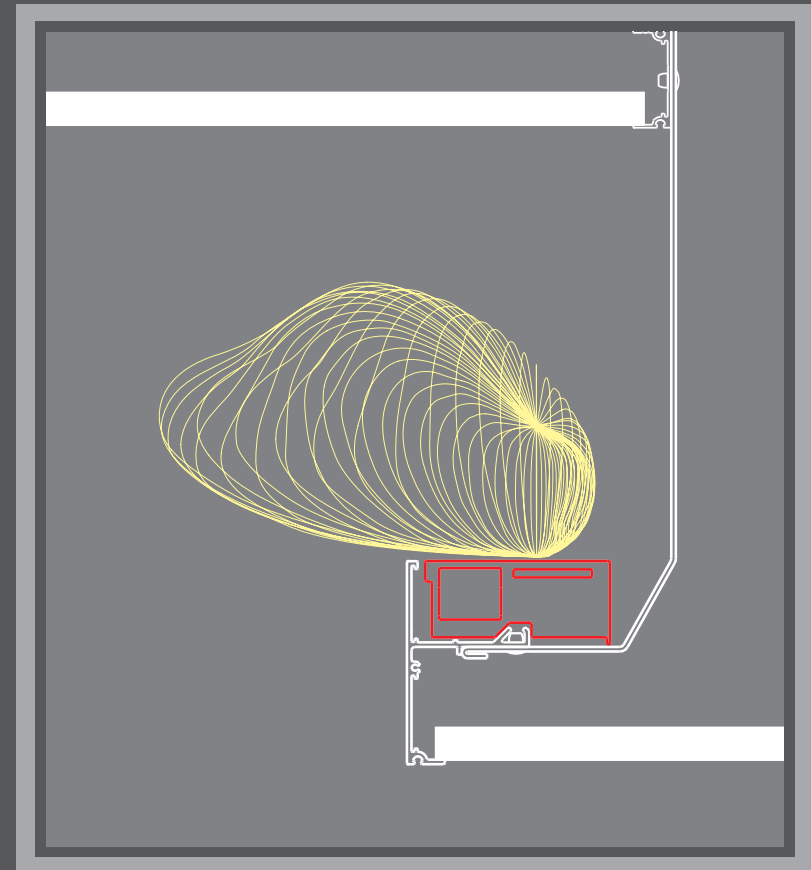


Featuring proven technology exclusive to Axis, SurroundLite puts peak-angle candlepower (cd/W) where you need it while consuming the least amount of watts.



CovePerfekt Wall

Peak Candela @ 145 degrees.



CovePerfekt Ceiling

Peak Candela @ 110 degrees.

It's All in The Distribution

Peak Candelas per Watt (cd/W): A new measure of cove light effectiveness

Many cove light manufacturers use bare LEDs to produce high-intensity light, but the beam is not controlled resulting in poor light distribution. With CovePerfekt, Axis provides a highly controlled spread of light featuring one of the highest peak cd/W ratios in the industry. For a true measure of cove light effectiveness, consult spec sheets to compare CovePerfekt peak cd/W values with ratios of other cove luminaires.

Up to three times the efficiency

Exclusive SurroundLite flat optics:

- Bend light to put it where you need it
- Deliver balanced luminance on cove surfaces
- Consume as little as 1/3 the watts of fluorescent & other LED cove systems



CovePerfekt - Ceiling

Optimal Efficiencies in any Cove Depth or Lumen Package

- ✓ Completely conceals direct view of LED light source
- ✓ Delivers peak candela at 110 degrees for uniform ceiling illumination
- ✓ Provides a soft glow on the backside of the cove

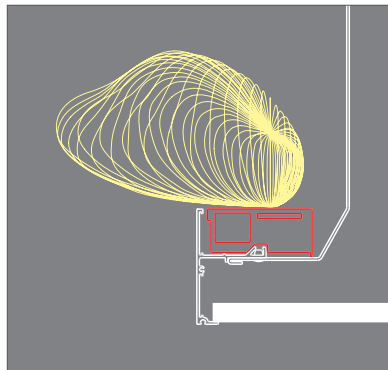
Performance/Linear FT at 3000K and 3500K

	Nominal Lumen Output	Input Watts*	Efficacy*
Hi - Output	1100 lm/ft	13.5 W/ft	81 lm/W
	900 lm/ft	10.6 W/ft	85 lm/W
	700 lm/ft	7.9 W/ft	89 lm/W
Lo - Output	500 lm/ft	5.4 W/ft	93 lm/W
	400 lm/ft	4.2 W/ft	95 lm/W
	300 lm/ft	3.1 W/ft	98 lm/W

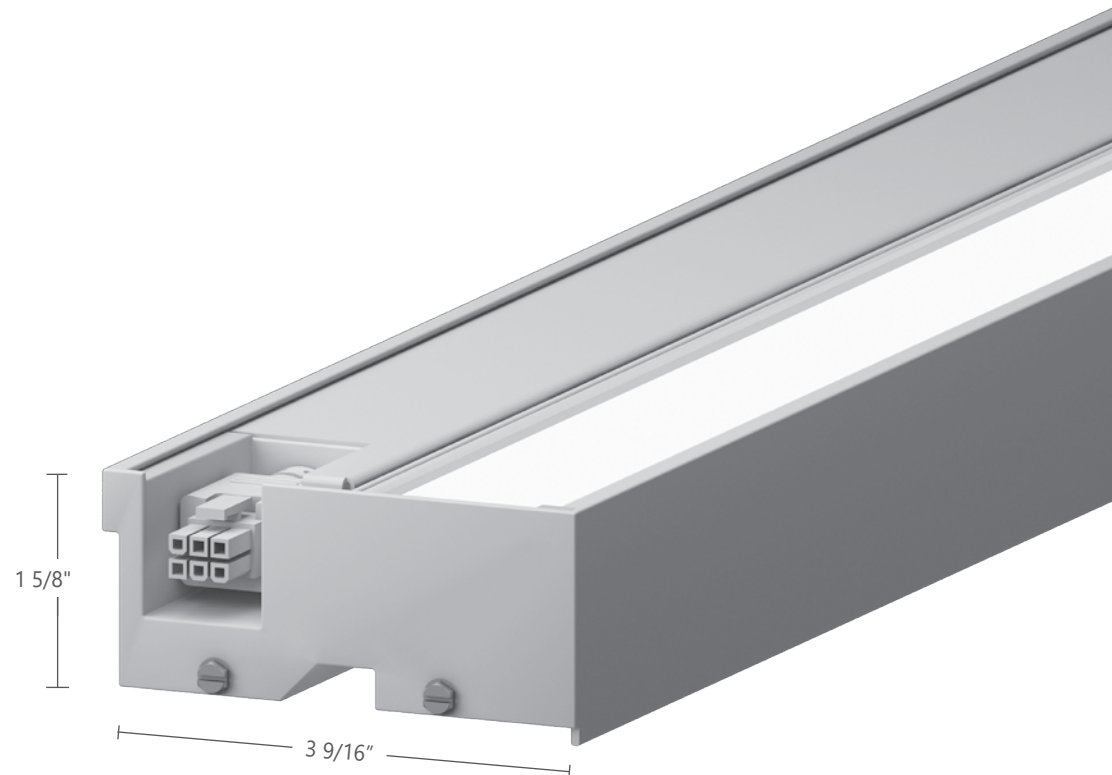
REFER TO PHOTOMETRIC DATA SECTION FOR EXACT VALUES

*for 2700K use 0.94 multiplier on watts and efficacy

*for 4000K use 1.02 multiplier on watts and efficacy



Peak Candela @ 110 degrees





CovePerfekt - Wall

High Quality Ambient Light in Corridors, Restrooms and Other Spaces

- ✓ Completely conceals direct view of LED light source
- ✓ Eliminates shadows or streaks on the wall
- ✓ Offers optimal efficiencies in any cove depth or lumen package

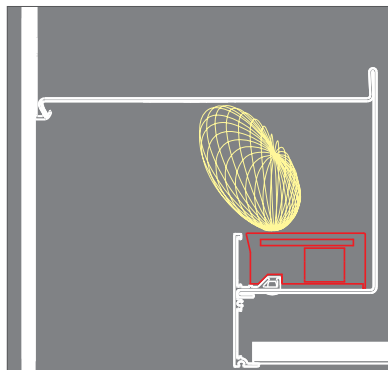
Performance/Linear FT at 3000K and 3500K

	Nominal Lumen Output	Input Watts*	Efficacy*
Hi - Output	1100 lm/ft	12.5 W/ft	88 lm/W
	900 lm/ft	9.8 W/ft	92 lm/W
	700 lm/ft	7.3 W/ft	96 lm/W
Lo - Output	500 lm/ft	5.0 W/ft	100 lm/W
	400 lm/ft	3.9 W/ft	102 lm/W
	300 lm/ft	2.9 W/ft	104 lm/W

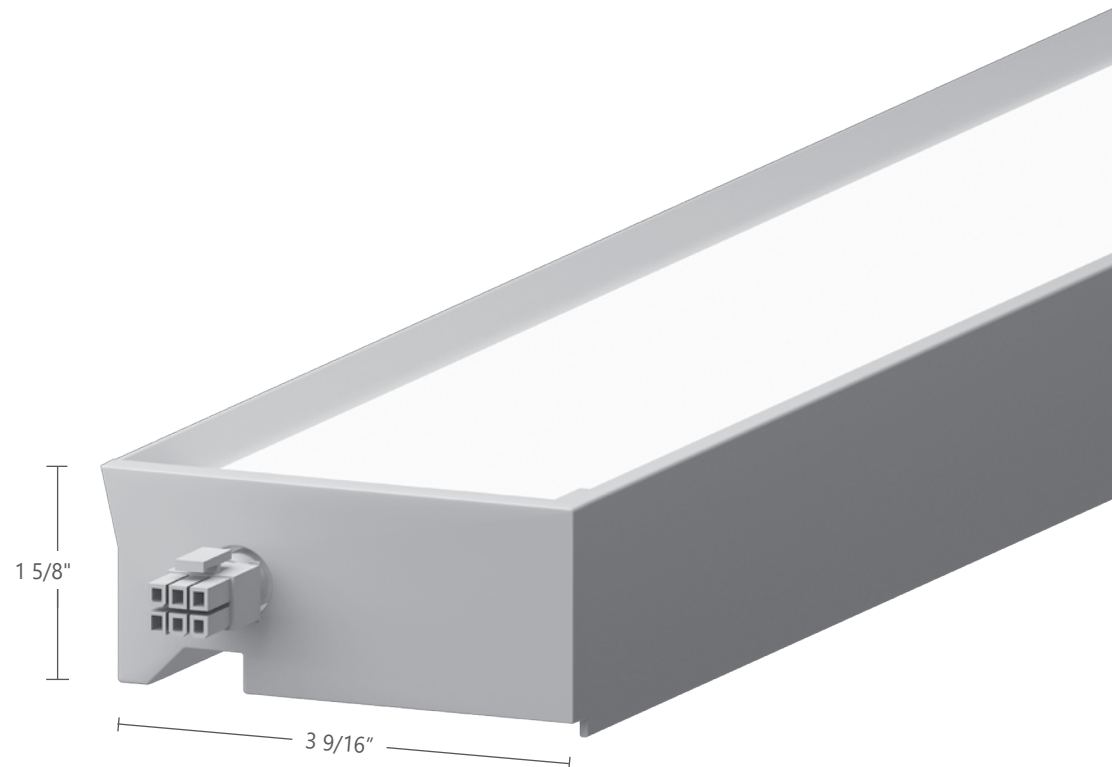
REFER TO PHOTOMETRIC DATA SECTION FOR EXACT VALUES

*for 2700K use 0.94 multiplier on watts and efficacy

*for 4000K use 1.02 multiplier on watts and efficacy



Peak Candela @ 145 degrees





CovePerfekt Features

One Aim-free Product Does it All - Plug and Play

Luminaire

- Continuous lengths up to 12 ft (one-foot increments)
- Integral (120, 277 & 347V) and emergency drivers
- Standard tool-less telescoping cable included with all cove products for easy installation, access and maintenance
- Shadow-free gap allowance in between luminaires: (ceiling 3" and wall 5")

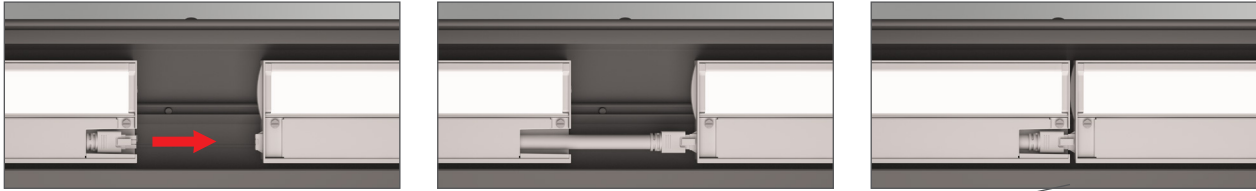
Specification

- No beam angles to select
- Limited construction coordination
- No need for remote drivers and other components
- Power feed type, quantity and location supplied on shop drawings with every project

Controls

- Agnostic: select from full range of dimming drivers
- Compatible integral drivers: 0-10V, DALI, Lutron EcoSystem with dim-to-off and dim-to-black options

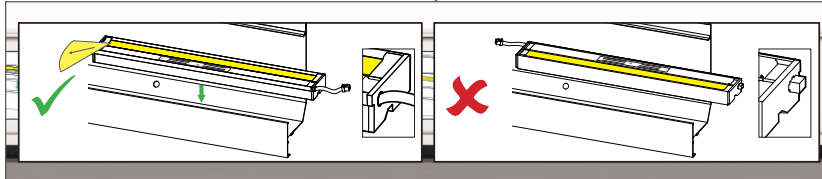
Installation



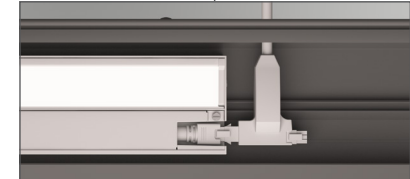
Telescoping Cable for Easy Installation



Continuous Row



Installation Label



T - End Power Feed

Corners



Straight End - Power Feed

CovePerfekt Features

Tool-free Installation without Tracks, Clips or Other Components

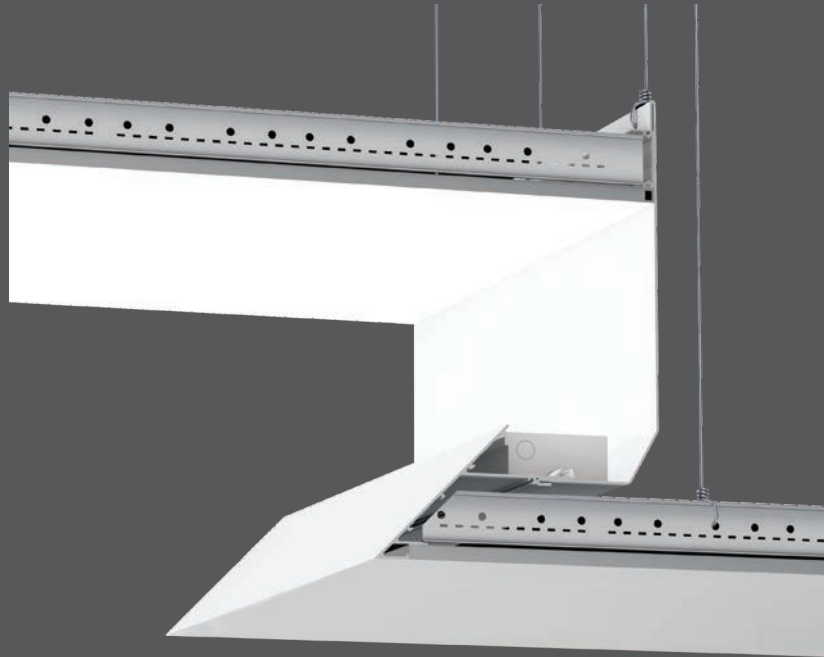
Installation

- Standard telescoping cables facilitate installation by allowing up to 6" play
- Long runs powered by single line voltage feed from back wall of cove (up to 100 feet)
- Two circuit 6-wire also available for longer runs (up to 500 feet)
- Cables rated to connect and disconnect while powered
- Install at the front of any cove
- Straight or T power feeds available to feed power anywhere along run

Maintenance

- Hassle-free operation
- Easy access to components via standard telescoping cable
- No dust cover required and dirt does not affect light distribution
- Modular construction: field-replaceable components

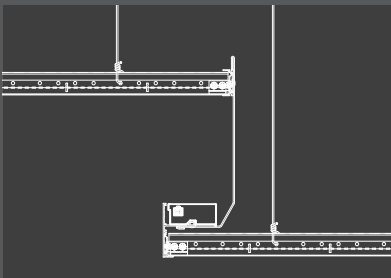
AXIOM® + CovePerfekt™



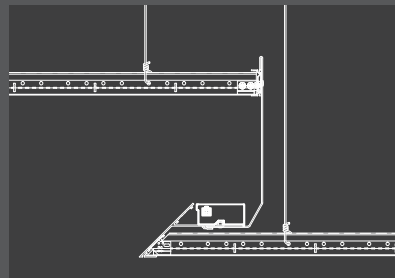
Armstrong®
CEILING SYSTEMS

axis

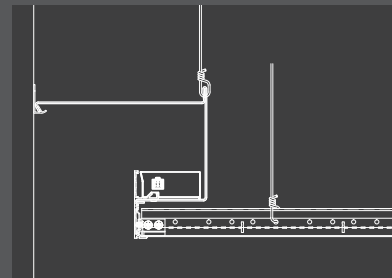
Available in these options:



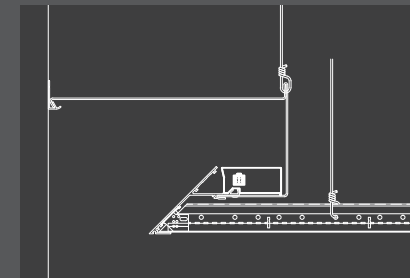
Axiom Ceiling
Classic Profile



Axiom Ceiling
Knife Edge® Profile



Axiom Wall
Classic Profile



Axiom Wall
Knife Edge® Profile

CovePerfekt in an Armstrong Axiom Cove - The Perfect Partnership

Up to 90% Less Labor to Install Coves

CovePerfekt was designed in sync with Axiom®, Armstrong's new, easy-to-install cove system. Together, they form the new standard for cove lighting.

- Easy onsite trade coordination
- Luminaire position at very front of cove to maximize efficiency
- Optional air return slots
- No need for complex cove details
- Keyed system ensures proper mounting of luminaires

Note: Axiom cove ordered separately. CovePerfekt by Axis may also be used in other cove installations.

To order an Axiom Indirect Cove contact your local
Armstrong sales representative or call 1-877-276-7876.
armstrong.com/axiomlightcoves





CovePerfekt excels at bringing out architectural details, whether you are producing a floating ceiling effect or highlighting a coffer's textured design. The luminaire's wide asymmetric distribution is ideal for creating soothing environments.

DAY SCENE

3	
301 - 316	←
317 - 332	→
Restrooms	↗
Elevators	↗



EVENING SCENE



In this hospital waiting area, CovePerfekt enhances vertical and horizontal surfaces to create large uniform planes of light that create a warm welcome for staff and patients. The daytime look and feel of the space is maintained in the evening.



Create social gathering spaces that mimic natural light. A ceiling cove welcomes occupants and surrounds the eating area with a soft indirect ambient glow, while other coves define a more informal sitting area.



CovePerfekt lets you imagine simple, streamlined concepts that provide ample ambient light levels. Choice of remote sensors to control lighting and increase energy savings, based on occupancy and/or daylight contribution.





Complement your lighting design concept with another layer of light using CovePerfekt. The concealed, glarefree LED light source delivers a subtle, ambient glow ideal for corporate spaces.

CovePerfekt in an Armstrong Axiom Cove - Best in Class

	Standard LED Cove Lights (with rotating optics)	CovePerfekt	CovePerfekt integrated in AXIOM Light Coves
Cove			
Wide range of pre-engineered sizes: Classic and Knife Edge® profiles			√
Crisp edge details, factory-mitered corner pieces and no visible fasteners			√
Extruded aluminum construction with factory-attached formed sheet aluminum			√
Factory finished to match approved samples			√
Luminaire			
Continuous lengths up to 12' (one-foot increments)		√	√
Maximum 1.5" height for all applications		√	√
Integrated driver		√	√
Pre-painted cove with matte optical paint finish			√
Performance			
Over 85 LPW with asymmetric distribution		√	√
Peak candlepower: 850 cd at 110° with 450 lm/ft at 4.5 W/ft		√	√
SurroundLite optics for up to three times the efficiency		√	√
Optimized component integration (driver, thermal, optical, etc.)		√	√
Optics			
Standard asymmetric distribution with no need for aiming adjustments		√	√
Individual secondary optics on each LED	√		
Tunable color technologies (mix in air)	√		
Controls			
Additional remote drivers and control boxes required	√		
Full range of integrated dimming drivers with dim to off		√	√
Controls agnostic (full compatibility)		√	√
Installation			
Tool-free luminaire installation – fixed in cove using keyed system			√
Installation by ceiling contractor – electrical comes in at the end for added time savings			√
90% cost savings on installation labor (cove only)			√

COVERPERFEKT CEILING HI-OUTPUT

1 PRODUCT ID	2 VERSION	3 LIGHT ENGINE	4 NOM. LM/FT	5 COLOR TEMP.	6 LENGTH FT (CM)	
CCH cove led ceiling HI-output	B4 B4 version	SL surroundlite	1100 1100 lm/ft	27 2700 K	1 1' (30.48 cm)	8 8' (243.84 cm)
			900 900 lm/ft	30 3000 K	2 2' (60.96 cm)	9 9' (274.32 cm)
			700 700 lm/ft	35 3500 K	3 3' (91.44 cm)	10 10' (304.80 cm)
				40 4000 K	4 4' (121.92 cm)	11 11' (335.28 cm)
					5 5' (152.40 cm)	12 12' (365.76 cm)
					6 6' (182.88 cm)	S# System Run
					7 7' (213.36 cm)	

COVERPERFEKT CEILING LO-OUTPUT

1 PRODUCT ID	2 VERSION	3 LIGHT ENGINE	4 NOM. LM/FT	5 COLOR TEMP.	6 LENGTH FT (CM)	
CCL cove led ceiling LO-output	B4 B4 version	SL surroundlite	500 500 lm/ft	27 2700 K	1 1' (30.48 cm)	8 8' (243.84 cm)
			400 400 lm/ft	30 3000 K	2 2' (60.96 cm)	9 9' (274.32 cm)
			300 300 lm/ft	35 3500 K	3 3' (91.44 cm)	10 10' (304.80 cm)
				40 4000 K	4 4' (121.92 cm)	11 11' (335.28 cm)
					5 5' (152.40 cm)	12 12' (365.76 cm)
					6 6' (182.88 cm)	S# System Run
					7 7' (213.36 cm)	

COVERPERFEKT WALL HI-OUTPUT

1 PRODUCT ID	2 VERSION	3 LIGHT ENGINE	4 NOM. LM/FT	5 COLOR TEMP.	6 LENGTH FT (CM)	
CCWH cove led wall HI-output	B4 B4 version	SL surroundlite	1100 1100 lm/ft	27 2700 K	1 1' (30.48 cm)	8 8' (243.84 cm)
			900 900 lm/ft	30 3000 K	2 2' (60.96 cm)	9 9' (274.32 cm)
			700 700 lm/ft	35 3500 K	3 3' (91.44 cm)	10 10' (304.80 cm)
				40 4000 K	4 4' (121.92 cm)	11 11' (335.28 cm)
					5 5' (152.40 cm)	12 12' (365.76 cm)
					6 6' (182.88 cm)	S# System Run
					7 7' (213.36 cm)	

COVERPERFEKT WALL LO-OUTPUT

1 PRODUCT ID	2 VERSION	3 LIGHT ENGINE	4 NOM. LM/FT	5 COLOR TEMP.	6 LENGTH FT (CM)	
CCWL cove led wall LO-output	B4 B4 version	SL surroundlite	500 500 lm/ft	27 2700 K	1 1' (30.48 cm)	8 8' (243.84 cm)
			400 400 lm/ft	30 3000 K	2 2' (60.96 cm)	9 9' (274.32 cm)
			300 300 lm/ft	35 3500 K	3 3' (91.44 cm)	10 10' (304.80 cm)
				40 4000 K	4 4' (121.92 cm)	11 11' (335.28 cm)
					5 5' (152.40 cm)	12 12' (365.76 cm)
					6 6' (182.88 cm)	S# System Run
					7 7' (213.36 cm)	

Bx refers to the current version/generation of LEDs available. As LEDs improve in performance, so too will the version of LEDs used in these and other Axis products (B4, B5, etc).
With Axis Spec-It-Forward, you can always specify the latest in LED technology regardless of your project timeline. Consult factory for more details.



Architectural Lighting. Your Way.

We reserve the right to change specifications without notice. Please consult our website for the most current technical information and to locate your nearest Axis representative.

1.800.263.AXIS - [T] 514.948.6272 - [F] 514.948.6271 - axislighting.com

© 2016 Axis Lighting Inc.