

How to Specify

Example:

Step 1

Control ordering code selection : Choose the IC control ordering code (see table on page 3).

Specify the complete code on the spec sheet

1) FRAMEWORK (IMWEP)

A configuration drawing is required. Please note that unspecified dimensions will be covered with portable blank covers. Factory is available for assistance. See page 2 for examples of how to specify.

INSPIRATION LAYOUTS

CABLE OR STEM MOUNTING

FINISHES

Ordering Guide

PRODUCT ID	TOTAL LENGTH	WIRE QUANTITY	FINISH	VOLTAGE
IMWEP	1-100 FT	1-100 FT	RC	0-10V
IMWEP	1-100 FT	1-100 FT	SC	0-10V
IMWEP	1-100 FT	1-100 FT	RC	0-10V
IMWEP	1-100 FT	1-100 FT	SC	0-10V

2) INSERT (EP)

Please specify location of inserts on system configuration drawing within the framework.

Ordering Guide

PRODUCT ID	MIDDLE LENGTH	TOTAL LENGTH	FINISH	COLOR TEMP	VOLTAGE
EP	1-10 FT	1-10 FT	RC	2700K	0-10V
EP	1-10 FT	1-10 FT	SC	2700K	0-10V
EP	1-10 FT	1-10 FT	RC	3000K	0-10V
EP	1-10 FT	1-10 FT	SC	3000K	0-10V



IMWEP(E,WC,2,D4I) CONTROLS		CIRCUITS	MOUNTING/SUSPENSION	CANOPY	CUSTOM (OPT.)
IMW	Integral Modular Wiring for 0-10V with (MD) Mini driver	1 1 circuit * 1E 1 Empower circuit ** 2 2 circuits *** +EC(#) emergency circuit****	CA(L) drywall+cable length (36" std.) CT9(L) TB/TG 9/16+cable length (36" std.) CT15(L) TB/TG15/16+cable length (36" std.) CTS(L) ST+cable length (36" std.) SLV(L) drywall+stem length >48" (18" std.) leveling	RC round canopy SC square canopy	C custom
* 2 circuits option not applicable with the selection. Wireless solution. See page 6 for supported platforms. See IC control guide for supported platforms.		* Control UP and DOWN together. ** Default option for Empower *** Control UP and DOWN separately. **** Specify quantity.	Specify length	White canopy standard	Please specify

Example:
Control type: **IMWEP(#)**
Control ordering code: E,WC,2,D4I
Quantity: 1 per Insert
The code to specify on the spec sheet: **IMWEP(E,WC,2,D4I)**

Step 2

Control ordering code selection : Specify same system for Linear Inserts ordering code. (SFLDSOFL code as example here).

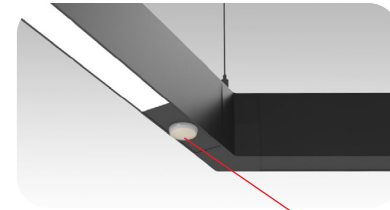
EP(E,WC,2,D4I) CONTROLS		END CAP FINISH
MD	integral mini driver 0-10V dimming (1%) - wired*	BLK black AP aluminum paint W white C custom
EP(#)	integral mini driver for Empower wireless with integral sensor / control module**	
* Available with multicircuit wiring. ** See page 2 for supported platforms.		! Please ensure that your end cap finish matches your framework finish selection (see Framework (SFF) spec sheet).

Example:
Control type: **EP(#)**
Control ordering code: E,WC,2,D4I
Quantity: 1 per Insert
The code to specify on the spec sheet: **EP(E,WC,2,D4I)**



EMPOWER INTEGRATED CONTROLS GUIDE

Patent pending integral modular wiring connection. One connection per insert. Designed to work with StencilFlex™ framework wired for IMWEP (Empower wireless sensor and control). StencilFlex™ insert includes Axis integral mini D4i driver. and sensor / control module dimming standard.



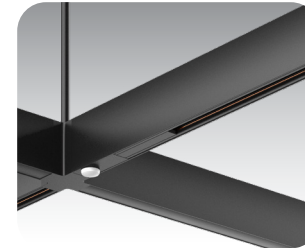
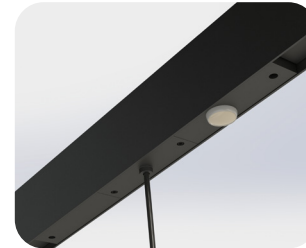
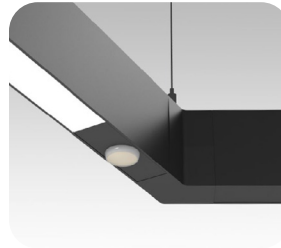
IC CONTROL SENSORS

The integrated control systems offered are:



● EMPOWER (EP):

Empower has a mini-communication module and sensor designed into each insert providing wireless-ready lighting control. Empower has a unique digital mini line-voltage intelligent driver in every insert (patent pending). These integrations in every insert enable connectivity, form and function with freedom of design.



● CONTROLS READY INTEGRATED WIRELESS

- Empower wireless controls with several tested and approved partners
- Every insert has a communication device and integrated sensor so every insert is controllable individually
- Move an insert and the control moves with it, giving you unprecedented choice with a "Resolution of ONE" control
- Sensors can be grouped, no matter where the element is
- Working with partners towards integration of next-gen sensors (future proof)

● INSTALLATION EXAMPLE

Sensor location



Control Product Ordering Code Designation	
INTEGRATED CONTROLS FEATURES	
IMWEP	Empower Wireless Control with PIR
BRAND	
W	WattStopper
A	Acuity EldoLED
E	Enlighted
P	Signify
O	Osram Encelium
L	Lutron
TECHNOLOGY	
D	Daylight Photocell
P	PIR
U	Ultrasonic
H	High Frequency
DT	Dual Technology (PIR + Ultrasonic)
C	Wired Control
WC	Wireless Control
PART NUMBER	
#	Axis sensor designation number
DIMMING PROTOCOL	
D4I	DALI/D4i

STENCILFLEX™ EMPOWER (IMWEP)+(EP)				
BRAND	LUTRON	ENLIGHTED		OSRAM
PRODUCT DESCRIPTION	VIVE INTEGRAL FIXTURE CONTROL WITH SENSOR (DFCSJ-OEM-OCC)	SU-5E-CL	SU-5E-IOT	SensiLUM
Product ordering code	L,WC,2,D4I : D4i DALI Driver	E,WC,2,D4I : D4i Dali driver	E,WC,3,D4I : D4i Dali driver	O,WC,1,D4I : D4i DALI Driver
StencilFlex™ AxisTrak™ Insert	✓	✓	✓	✓
StencilFlex™ Direct Linear Insert Louver	✓	✓	✓	✓
StencilFlex™ Direct MikroLite™ Insert	✓	✓	✓	✓
StencilFlex™ Direct Linear Insert SO Flush Lens	✓	✓	✓	✓
StencilFlex™ Direct Linear Insert SO Regressed Lens	✓	✓	✓	✓
StencilFlex™ Direct Linear Insert Wall Wash	✓	✓	✓	✓
StencilFlex™ Indirect SurroundLite Insert	✓	✓	✓	✓

! Quantity of sensors equals quantity of inserts (1 sensor per insert)