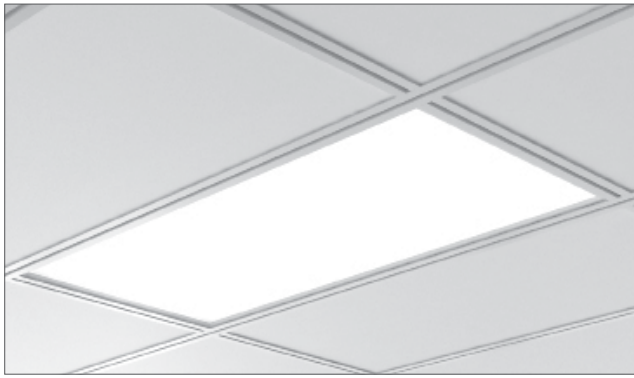


TRAYFIT 2x4

Recessed - Compatible with Dynamax™ T-Bar.



Project _____

Type _____

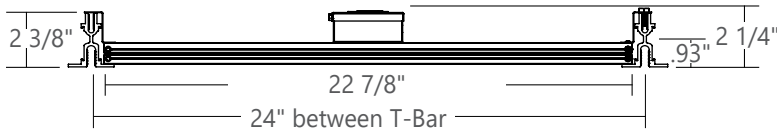
Notes _____

PERFORMANCE AT 3500K

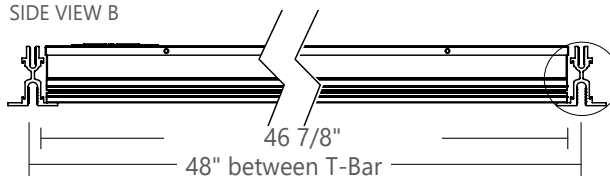
NOMINAL LUMEN OUTPUT	INPUT WATTS*	EFFICACY
3000 lm	24.2 W	124 lm/W
5000 lm	40.3 W	124 lm/W
7500 lm	60.4 W	124 lm/W

* Based on a 2'x2' luminaire using one driver
Please consult factory for custom lumen output and wattage.

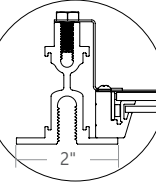
SIDE VIEW A



SIDE VIEW B



DETAIL VIEW



PoE



SurroundLite™



cULus Listed
Type I.C.



Ordering Guide

TRAYFIT	24	TOTAL NOM. LUMENS		CRI	COLOR TEMP.	SO
PRODUCT ID	SIZE					SHIELDING
TRAYFIT TrayFit - DynaMax™ ceiling compatible	24 2'X4'	3000	3000 lm - Min	80	30 3000 K	SO spotless lens
		7500	7500 lm - Max	90	35 3500 K	
					40 4000 K	
Outputs between listed min and max are available. Consult factory for outputs outside of the listed range.						

W	VOLTAGE	DRIVER	CIRCUITS	MOUNTING/SUSPENSION	BATTERY (OPTIONAL)
W white	120 120 V 277 277 V 347 347 V UNV universal DC low voltage*	DP dimming (0-10V) 1% LT(#) lutron* BI bi-level dimming O(#) other** POE(#) POE drivers*	1 1 circuit +E(#) emergency section* +GTD(#) generator transfer device*	TBA t-bar Armstrong Dynamax	B(#) battery pack
	* Only available with POE drivers.	*See page 2 to specify system **Please consult factory; see page 2	* Specify quantity		Please consult factory

OTHER (OPTIONAL)	CUSTOM (OPTIONAL)
F fuse* FW(#) flex whip (6' std) CP chicago plenum	C custom
* Requires 120V or 277V	Please specify

ELECTRICAL

Lutron driver*	LDE1 - Hi-lume 1% EcoSystem with Soft-on, Fade-to-Black LTEA - Hi-lume 1% 2-wire (120V forward phase only) *Consult factory
Other drivers**	DALI - Digital Addressable Lighting Interface DMX - Digital Multiplex LV - line voltage - Advance Mark 10 Xitanium SR - For wireless sensor
Power over Ethernet POE drivers*	MOLEX IGOR O - Other (Consult factory) UL2108 certified for integral or remote driver
Emergency	Integral emergency battery pack or emergency circuit optional.
Input Voltage	120V, 277V, 347V, UNV, DC.

*Choose driver from available options.

i Incorporating these components may have limitations or affect the length of the luminaire. Please contact factory for more details.

SPECIFICATIONS

CONSTRUCTION

Housing	Die formed cold rolled sheet steel (22 gauge).
Door frame	Extruded aluminum.
Light Guide	0.157" PMMA.
Lens	PMMA satin blend.
Reflectors	High reflectance post painted white.
Luminaire support	Hold-Down clips


WARRANTY

Axis Lighting will warrant defective LEDs, boards, and drivers for 5 years from date of purchase. Warranty is valid if luminaire is installed and used according to specifications. If defective, Axis will send replacement boards or drivers at no cost along with detailed replacement instructions and instructions on how to return defective components to Axis.

LED SYSTEM

CRI	Minimum 80 or 90 color rendering index.
CCT Single Color	Choice of 2700K, 3000K, 3500K and 4000K color temperature with a great color consistency (within 3-step MacAdam ellipse). Both within fixture and fixture to fixture.
LED life	Minimum 50,000h with 85% of lumen maintenance in 25°C ambient temperature, in compliance with IES LM-80 testing measurements.
Thermal Management	Aluminum housing acting as the heat sink to maximize life.
Environment	Dry and damp rated in operating ambient temperatures of 0-40°C (32-104F).

APPROVALS

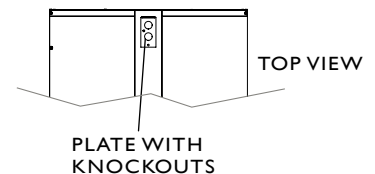
Certified to UL and CSA standards 
Chicago Plenum Certified (CCEA)
Meets NYC requirements
Suitable for damp locations.
IC Rated (Insulated ceiling)

WHITE FINISH

Aluminum paint and powder coated

STANDARD AND END MOUNT POWER FEED

Knockouts for BX cable connection are provided on the top of the luminaire.
(BX CABLE BY OTHER)

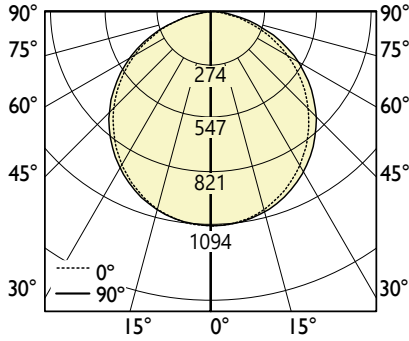


WEIGHT

2x4 27 lbs / 12.2 kg

● PHOTOMETRIC DATA

PHOTOMETRIC CURVE



Total Lumens: 3000 lm
Input Watts: 24.2 W
Efficacy: 124 lm/W
 IES FILE: TRAYFIT-24-3000-80-35-SO.IES
 TESTED ACCORDING TO IES LM-79-2008

CANDELA DISTRIBUTION

Vertical Angle	Horizontal Angles				
	0	22.5	45	67.5	90
0	1093	1093	1093	1093	1093
5	1088	1088	1089	1089	1087
15	1048	1049	1051	1052	1051
25	968	970	974	976	975
35	849	851	856	858	859
45	701	701	705	709	710
55	533	531	534	537	538
65	356	354	354	356	358
75	184	181	180	180	182
85	42	40	39	39	40
90					

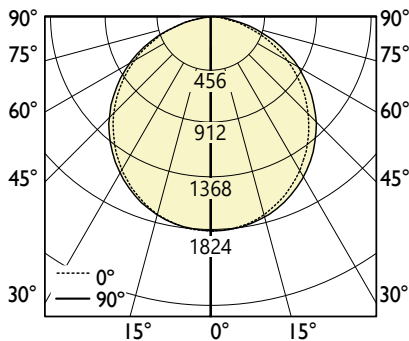
ZONAL LUMENS

Zone	Lumens
0	
0-10	103
10-20	297
20-30	448
30-40	535
40-50	544
50-60	478
60-70	353
70-80	193
80-90	48
90	

LUMINANCE DATA (cd/m²)

Vertical Angle	Horizontal Angles		
	0	45	90
45	1560	1570	1581
55	1463	1466	1478
65	1328	1321	1333
75	1119	1096	1107
85	765	710	719

PHOTOMETRIC CURVE



Total Lumens: 5000 lm
Input Watts: 40.3 W
Efficacy: 124 lm/W
 IES FILE: TRAYFIT-24-5000-80-35-SO.IES
 TESTED ACCORDING TO IES LM-79-2008

CANDELA DISTRIBUTION

Vertical Angle	Horizontal Angles				
	0	22.5	45	67.5	90
0	1822	1822	1822	1822	1822
5	1812	1813	1814	1815	1812
15	1747	1748	1751	1753	1752
25	1613	1616	1622	1626	1626
35	1415	1418	1426	1431	1432
45	1168	1169	1175	1181	1183
55	888	886	890	895	897
65	594	589	591	593	596
75	306	301	300	300	303
85	71	66	65	64	66
90	2	2	2	2	2

ZONAL LUMENS

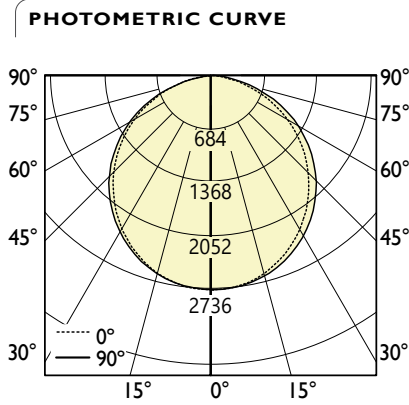
Zone	Lumens
0	
0-10	172
10-20	494
20-30	747
30-40	891
40-50	907
50-60	797
60-70	588
70-80	322
80-90	81
90	

LUMINANCE DATA (cd/m²)

Vertical Angle	Horizontal Angles		
	0	45	90
45	2600	2617	2635
55	2438	2443	2464
65	2213	2201	2221
75	1865	1826	1845
85	1275	1183	1198

i All IES files are available for download at: www.axislighting.com

● PHOTOMETRIC DATA



CANDELA DISTRIBUTION					
Vertical Angle	Horizontal Angles				
	0	22.5	45	67.5	90
0	2733	2733	2733	2733	2733
5	2719	2720	2721	2722	2718
15	2621	2622	2627	2630	2628
25	2420	2424	2434	2439	2439
35	2123	2128	2139	2146	2148
45	1752	1753	1762	1771	1775
55	1332	1328	1335	1342	1346
65	891	884	886	889	894
75	460	451	450	450	455
85	106	99	98	97	99
90	3	3	3	3	3

ZONAL LUMENS	
Zone	Lumens
0	
0-10	259
10-20	741
20-30	1121
30-40	1337
40-50	1360
50-60	1196
60-70	882
70-80	483
80-90	121
90	

LUMINANCE DATA (cd/m²)			
Vertical Angle	Horizontal Angles		
	0	45	90
45	3901	3925	3953
55	3657	3665	3696
65	3320	3302	3332
75	2798	2740	2768
85	1912	1774	1797

Total Lumens: 7500 lm
Input Watts: 60.4 W
Efficacy: 124 lm/W
 IES FILE: TRAYFIT-24-7500-80-35-SO.IES
 TESTED ACCORDING TO IES LM-79-2008

i All IES files are available for download at: www.axislighting.com